

**2020 COLORADO STATE FAIR  
4-H CONTEST REQUIREMENTS**

**Section 8**

**Entry deadline will be Monday two weeks prior to State Fair \*(Expect for Shooting Sports Contests).  
No late entries will be accepted.  
Exception is State Fair Fashion Revue as the deadline will be August 14.**

*Table of Contents*

Cake Decorating Contest.....	2
Creative Cooks Contest.....	6
4-H Public Presentations.....	11
Dog Trials.....	13
Showmanship.....	17
Obedience.....	20
Rally.....	20
Agility.....	23
Fashion Revue.....	25
Colorado 4-H Digital Contest .....	26
Robotics Challenge.....	27
Engineering Design Challenge.....	28
Rocket Fly Day.....	30
Cat Show.....	30
Section 9	
Awards.....	35

**Contest Superintendents**

Vanessa Tranel..... Cake Decorating Contest Superintendent  
 Verla Noakes ..... Creative Cooks Contest Superintendent  
 Julia Hurdlebrink .... Creative Cooks Contest Superintendent  
 ..... Demonstration Contest Superintendent  
 ..... Interpretive Reading Superintendent  
 ..... Dog Trials General Superintendent  
 Tina Wickizer..... Showmanship Dog Superintendent  
 ..... Dog Tabulations Super.  
 Donna Darnell ..... Dog Rally Super.  
 Kelsey Darnell..... Rally Team Super.  
 ..... Obedience Superintendent  
 ..... Agent Dog Superintendent  
 ..... Fashion Revue Superintendent  
 Kim Sterkel..... Fashion Revue Superintendent  
 Abby Weber..... Robotics Challenge Superintendent  
 Willie Wilkins..... Asst. Robotics Challenge Superintendent  
 Thomas Kindvall..... Rocket Fly Day Superintendent  
 ..... Asst. Rocket Fly Day Superintendent  
 Marlena Griesse..... Cat Show Superintendent



# 2020 Cake Decorating Contest

Vanessa Tranel. . . . . Superintendent  
[Vanessa.tranel@colostate.edu](mailto:Vanessa.tranel@colostate.edu)

Call 970-491-7883 for questions about cake decorating contest.

**Contest date: Sunday, August 30**

**Participant's Entry Fee: \$10** payable to the county offices with contestant's registration materials.

**Registration Deadline:  
August 17**

**Entry deadline will be Monday two weeks prior to State Fair.** (However, online registration completed by **August 10** is highly preferable.)

**Place:** The contest is held in the 4-H Exhibit Building on the State Fairgrounds.

**Gate Admission:** Counties are responsible for ordering gate passes from the Colorado State Fair and distributing them to the individuals who will be Cake Decorating contestants. Superintendent will not be sending passes. Parking is not available on the fairgrounds.

**Lodging:** Lodging is available at the Colorado State Fair/4-H Camp Tobin dormitories. Meals are available at the 4-H dining hall. Both require advanced reservations. Register for meals and lodging through 4honline. Contact your Extension office for help with registration.

Each county office will issue **one check payable to Colorado State University/State Fair** for county entry total.

**Mail by Aug. 10 to:**

Sharie Harless  
CSU State 4-H Office  
Campus Delivery 4040  
Fort Collins, CO 80523-4040

**RULES:**

1. This contest will be open to 4-H members 8 to 18 years of age.
2. Members must be enrolled in the project unit in which they are participating.
3. Counties may enter one contestant in each division for a maximum of three contestants in each unit.

The following divisions will be judged in each unit:

<u>Units 1-6</u>	<u>Units 7-9</u>
Junior 8-10	Intermediate 11-13
Intermediate 11-13	Senior 14-18
Senior 14-18	

Unit 10-11  
**SENIORS ONLY**

4. Judging will be done by units.
5. Project exhibit rules apply to this contest. All contestants in a unit will work at the same time. Judges will circulate to observe methods used.
6. All contestants must bring:
  - Cake or cake forms for decorating.
  - All equipment and materials required to decorate a cake.
  - Frosting needed (colored and ready to use).
7. The frosting must be applied as part of the contest in Units 1 through 7. Units 9 and 10 may frost the cake prior to the contest. For Unit 8 the contestants will need to cover the cake with fondant as a part of the contest. Contestants will be responsible for planning a design that can be completed in the time allowed.
8. No cell phones are allowed during the judging.
9. No parents are allowed in the kitchen area before or during the judging.

**UNIT 1. — EDIBLE---30 MINUTES**

Class 410	Jr.
Class 411	Int.
Class 412	Sr.

- A. Frost single-layer 8- or 9- or 10-inch round or square or 9" x 13 **real** cake.
- B. Cake may be crumb-frosted before, but base frosting must be applied as part of the contest.
- C. Apply design using edible materials (no tips). One fourth of the top of cake should be visible to show smooth base.
- D. One fourth of the top of the cake should be visible to show smooth base.
- E. Fondant may be used for decorations only on the cake. No royal icing can be used as icing or decorations. No non-edible material can be used in units 1-6.

- F. Bottom Base Border required.
- G. Clean up area.

Class 420 Int.  
Class 421 Sr.

## UNIT 2. —SINGLE LAYERED -- 1 HOUR

Class 413 Jr.  
Class 414 Int.  
Class 415 Sr.

- A. Frost single-layer 8" or 9" or 10"- inch round or square or 9" x 13" rectangle **real** cake for this unit.
- B. Cake may be crumb-frosted before, but base frosting must be applied as part of the contest.
- C. Decorate the real cake using a leaf tip, star tip and round tip only. (No fondant or royal icing may be used as icing or decorations on the cake.) Only required tip work can be used in Unit 2.
- D. One fourth of the top of cake should be visible to show smooth base.
- E. Bottom Bass Border is required.
- F. Only edible materials may be used. No non-edible material can be used in units 1-6.
- G. No flowers made on a flower nail or materials other than frosting in decorations.
- H. Clean up area.

## UNIT 3. —TWO LAYERED --- 1 HOUR

Class 416 Jr.  
Class 417 Int.  
Class 418 Sr.

- A. Frost two-layered **real** cake (8" or 9" or 10" -inch round or square).
- B. Cake may be crumb-frosted before, but base frosting must be applied as part of the contest.
- C. One fourth of the top of the cake should be visible to show smooth base.
- D. Decorate cake using 3-5 different types of tips. The following tips must be used:
  - Leaf tip
  - Round tip
  - Star tip
- E. No non-edible material can be used in units 1-6.
- F. No fondant or royal icing may be used.
- G. Side border is required.
- H. Bottom Base Border is required.
- I. Spatula, brush striping and figure piping are optional.
- J. No flowers made on a flower nail or materials other than frosting in decorations.
- K. Clean up area.

## UNIT 4 ----CHARACTER CAKES ---1 HOUR

Class 419 Jr.

- A. One decorated character **real** cake (an entire cake which resembles the shape of a character or object made without cutting, other than a classic square, round, oblong, heart, hexagon, oval or petal cake shape). Three-dimensional cakes are acceptable.
- B. Cake may be crumb frosted before contest.
- C. Decorate cake using primarily the star tip or other tips appropriate to the design. No non-edible material can be used in Units 1-6.
- D. Bottom Base Border is required.
- E. Clean up area.

## UNIT 5. —SMALL TREATS---1 HOUR

Choose **one** of the following categories:

- Themed Cupcakes or
- Stacked Cupcakes or
- Character Cupcakes

Class 422 Jr.  
Class 423 Int.  
Class 424 Sr.



### THEMED CUPCAKES

- A. Decorate a minimum of 3 and a maximum of 6 regular size (2 ¾ inches) cupcakes in liners using frosting and edible materials.
- B. Fondant and royal icing can be used only for decorations.
- C. Cupcakes should be of a similar design or theme (themed cupcakes mean that there is a central idea between all the cupcakes; for example: animal theme, flower theme, Disney characters, cupcakes do not have to be all the same.)
- D. Frosting must cover the cupcake and provide a base for decorations. One-fourth must be visible on at least one cupcake.
- E. No non-edible materials can be used in Units 1-6.
- F. Cupcakes can be displayed in a 6-cup muffin tin or in foil liners on sturdy paper/plastic plate.
- E. Clean up area.

### STACKED CUPCAKES

- A. Decorate a minimum of 4 and a maximum of 8 cupcakes creating one design or theme where cupcakes are

stacked on top of each other and decorated using frosting and edible materials. (Experiment with using mini cupcakes and regular sized cupcakes when stacking) Non-visible supports can be used to hold stacked cupcakes.

- B. Fondant and royal icing can be used only for decorations.
- C. Frosting must cover the cupcake and provide a base for decorations. One-fourth must be visible on at least one cupcake.
- D. Cupcakes (at least 2 and not more than 4 stacked cupcakes should be securely (secure with frosting) on a display board.
- E. No non-edible material can be used in Units 1-6.
- F. Clean up area.

### CHARACTER CUPCAKES

- A. Decorate and develop a character or design using multiple cupcakes. Character Cupcakes are multiple individually decorated cupcakes that come together to create the character, (for example: cupcakes that create an alligator or scarecrow etc.)
- B. Decorate using frosting and edible materials.
- C. Frosting must cover the cupcake and provide a base for decorations. One-fourth must be visible on at least one cupcake.
- D. Fondant and royal icing can be used only for decorations. No non-edible materials can be used in units 1-6.
- E. Cupcake character must be displayed on one cake board with a maximum size of 9" x13".
- F. Clean up area.

### UNIT 5 -SMALL TREATS – 1 Hour

Choose one of the following categories:

- Themed Cookies
- Stacked Cookies

Class 425 Jr.  
Class 426 Int.  
Class 427 Sr.

### UNIT 5 –DECORATED THEMED COOKIES

- A. Decorate a minimum of 3 and maximum of 6 regular size (3 inches) cookies. Cookies should be of a similar design or theme.
- B. Decorate using frosting and edible materials.

- C. Fondant and royal icing can be used only for decorations. No non-edible materials can be used in units 1-6.
- D. Cookies should be displayed on a 12-inch disposable platter.
- E. Clean up area.

### DECORATED STACKED COOKIES

- A. Decorate a minimum of 6 inches in height and maximum of 12 inches in height cookies creating one design or theme where cookies are stacked on top of each other.
- B. Decorate using frosting and edible materials.
- C. Frosting must cover the cookie and provide a base for decorations. One-fourth must be visible on at least one cookie.
- D. Fondant and royal icing can be used only for decorations. No non-edible materials can be used in units 1-6.
- E. Cookies should be secured to a sturdy covered board for display not to exceed 12" x 12".
- F. Clean up area.

### UNIT 6. ---CUT-UP CAKES— 1 HOUR

Class 428 Jr.  
Class 429 Int.  
Class 430 Sr.

- A. One decorated cut-up cake using **three different types** of decorator tips (not different sizes of the same tips) using only **edible materials**. Non-edible internal supports are allowed but must not show.
- B. No non-edible material can be used in units 1-6.
- C. The member must provide a diagram or pattern of how the cake was cut.
- D. Pieces may be cut, put together and crumb-frosted prior to contest.
- E. Bottom Base Border is required.
- F. Clean up area.

### UNIT 7. —FLAT SURFACE AND NAIL FLOWERS---1 HOURS

Class 431 Int.  
Class 432 Sr.

- A. Two-layered 8, 9 or 10-inch cake or cake form. Contestant may be asked to make a flower in front of the judge.
- B. Cake may be crumb-frosted before, but base frosting must be applied as part of the contest.
- C. Flowers may be made prior to the contest.

- D. Use only edible materials except stamens on flowers. Stamens may be purchased or hand-made.
- E. No Fondant
- F. Decorate cake using a minimum of:
  - One flat surface flower
  - One flower made on a flat flower nail
  - One border
  - **One side trim is required**
  - Texturing is optional
  - No Fondant
- G. Bottom Base Border is required.
- H. Clean up area.

**UNIT 8. —FONDANT----1 HOUR**

Class 433 Int.  
Class 434 Sr.

- A. Decorate one two-layered cake or cake form, 8, 9 or 10-inches round or square.
- B. Cake can be prepared for fondant.
- C. Cake must be covered in fondant as part of the contest.
- D. Decorated using skills learned from Units 3-7 and fondant and gum paste decorations.
- E. Bottom Base Border is required.
- F. Clean up area.

**UNIT 9. ----LILY FLOWERS ---1 HOUR**

Class 435 Int.  
Class 436 Sr.

- A. One decorated two-layered 8, 9, 10-inch cake or cake form.
  - B. Completely decorate the cake using:
    - **Flower made on a lily-flower nail is required**
    - **String work (cornelli, sota, or applique lace, etc.) is required.**
    - Texturing is optional
- Contestant may be asked to make a flower in front of the judge.
- C. Cake may be frosted in advance or as part of the contest.
  - F. Bottom Base Border is required.
  - G. Clean up area.

**UNIT 10 –TIERED CAKES –SENIORS ONLY  
—1 ½ HOURS**

Class 437 Sr.

- A. Decorated one cake or cake form of three or more tiers of graduated sizes, using supports.
- B. Cakes may be frosted in advance and supports placed.

- C. Cake should be assembled and decorated as part of the contest.
- D. Decorate cake using:
  - Supports and separator plates
  - Pillars (optional)
  - Flowers, borders, side trim as desired
- E. Bottom Base Border is required.
- F. Clean up area.

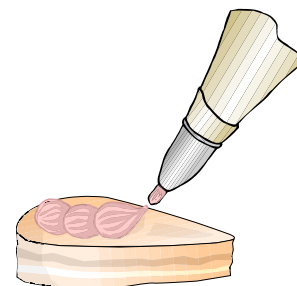
**UNIT 11—MOLDS—SENIORS ONLY—  
1 HOUR**

Class 438 Sr.

- A. An edible molded or shaped object of any size or shape must be used.
- B. The contestant may decorate a free-standing molded or shaped object as part of the contest or may use a molded object as part of a cake design. If using a cake, the cake may be frosted in advance, or as part of the contest.
- C. Molding may be done in advance, but decoration should be applied as part of the contest.
- D. Contestant should explain to the judge how the molding or shaping was done. Tell about the material used, whether ingredients were difficult to secure, how fast the material sets up, etc. If possible, demonstrate shaping of the selected material. Show the molds used.
- E. Clean up area.

**AWARDS**

- Contestants are placed in blue, red and white groups.
- A Champion and Reserve Champion may be named in each division.
- A Grand Champion and Reserve Grand Champion junior, intermediate and senior contestant may be named overall.





# 2020 Creative Cooks Contest

Verka Noakes . . .Superintendent  
[verla.noakes@fremontco.com](mailto:verla.noakes@fremontco.com)  
Julia Hurdelbrink. . .Assistant  
Superintendent  
[jhurdelbrink@adcogov.org](mailto:jhurdelbrink@adcogov.org)

**Contest date: Saturday, August 29**

**Location:** Colorado State Fair Grounds, 4-H Home Economics Building

**Registration:** 4-H Home Economics Building

**Check-In:** Juniors will compete first, followed by their awards, then Intermediates, followed by their awards and then Seniors followed by their awards.

A tentative schedule will be emailed to all contestants during the week prior to the contest.

**Registration Deadline: August 17**  
**Entry deadline will be Monday two weeks prior to State Fair.**

**Online registration completed by August 10 is highly preferable.**

Recipes **must** be included with entries. Recipes not received by **August 10** will not be included in the Creative Cooks cookbook.

Each county office will issue **one check payable to Colorado State University/State Fair for county entry total.** Mail by **Aug. 10** to:

Sharie Harless  
CSU State 4-H Office  
4040 Campus Delivery  
Fort Collins, CO 80523-4040

**Participant's Entry Fee: \$10**, which includes one cookbook.

**Eligibility:**

Contestants must be regularly enrolled 4-H members but do not have to be enrolled in a 4-H foods project.

Counties may enter one entry in each age division as listed for a maximum of 12 entries.

**Divisions**

Juniors: 8-10 years' old  
Class 431 Individual  
Class 432 Team

Class 433 Colorado Specialty Individual  
Class 434 Colorado Specialty Team

Intermediates: 11-13 years' old

Class 435 Individual  
Class 436 Team  
Class 437 Colorado Specialty Individual  
Class 438 Colorado Specialty Team

Seniors: 14-18 years' old

Class 439 Individual  
Class 440 Team  
Class 441 Colorado Specialty Individual  
Class 442 Colorado Specialty Team

Age divisions are determined by age as of December 31 of the previous year.

A team shall consist of two 4-H members. They may be from different age divisions; however, they must compete in the age division of the oldest team member.

Contestants may enter as an individual or as a member of a team, but not both.

Contestants participating in other contests may still participate in Creative Cooks if they can arrange to be available for the judging period for their age group and before the judges begin final consultations.

**Check-In:** 4-H Home Economics Building, West door

Juniors will compete first, followed by their awards, then Intermediates, followed by their awards, and then Seniors followed by their awards.

A tentative schedule will be emailed to all contestants during the week prior to the contest.

**Criteria--Contestant/Team will:**

1. Plan a menu for a meal (for example, but not limited to, breakfast, brunch, lunch, dinner, barbecue, picnic, high tea, campout, sports game, holiday or birthday party).
2. Create a table or serving display around a theme, occasion, or activity and your meal. The display must include and involve the following:
  - Fit into the allowed a 48" square for a display area. All props must fit within the designated space.
  - Contestant(s) provides a card table if needed; must fit within 48" square.

- One place setting appropriate for the meal planned.
- A menu displayed on any stiff medium (foam board, tile, chalk board, framed, etc.) detailing the entire menu (no larger than 8-1/2"x11"). It is helpful if the menu can stand alone.
- Centerpiece. No food, real or artificial, will be used as a centerpiece or part of a centerpiece.
- Appropriate serving dishes and utensils.

3. Prepare, bring, and display one serving of a food item from the menu. This display will show how you would serve this dish, including garnishes, etc.

**Guidelines:**

- No commercially prepared food is accepted.
- Juniors and Intermediates should not prepare deep fat fried foods due to safety concerns.
- Display the food prepared on the proper plate or bowl on your table setting.
- Adults cannot help contestant(s) do prep work in the contest kitchen or set up the display. To do so may disqualify the member from the contest or forfeit all awards. They may help transport heavy or breakable items, boxes, etc. as needed.
- Use of garnish is encouraged.
- Cook, bake, prep food at home as much as possible.
- See contest kitchen use below.

4. Present your display and food item to a judge. Judge(s) briefly interview participants regarding exhibits, and what they have learned in preparing the exhibit. The participant should not begin or end with a prepared speech or demonstration without being asked to by the judge(s).

5. Serve your prepared food item to the judge(s).

**Guidelines:**

- Use a separate sample for your food kept at your display table. Do not use your displayed serving for the judge's sample.
- Serve the judges sample using disposable dishes and utensils. Do not use any food, dishes, or utensils from your display.
- Use disposable plastic gloves if hands are going to touch the food while serving the judge.

- Do not use plastic gloves throughout your set up and judging process. They do not remain sanitary very long.
- Have a copy of the recipe and be ready to show to the judge if requested.

**Food Safety and Contest Kitchen Use:**

1. All food used for Creative Cooks should be brought from home unless you choose to purchase perishable items in Pueblo.
2. When selecting your recipe and prepared item, consider how the item will be transported to the State Fair safely (kept at safe temperatures) and attractively displayed. Judges may refuse to sample any food items they feel are unsafe to eat.
3. The kitchen at the Colorado State Fair is extremely limited so do as much food preparation as possible at home. A microwave is available to be used for warming only. Electrical outlets are available to plug in slow cookers, etc. to keep food at correct temperatures.
4. Leave the kitchen clean when finished.

**Judging will be based on:**

- A. Exhibitor — well groomed; understands meal planning
- B. Menu — balanced for flavor, color, texture, shape and nutrition
- C. Prepared dish — appearance, flavor and quality
- D. Table Setting — attractive; suitable for meal
- E. Knowledge of nutrition
- F. Specialty food knowledge
- G. Food safety
- H. Creativity

**Colorado Specialty Foods Category:**

1. Contestants entered in this category or classes must use the 2020 designated food or ingredient in their Creative Cooks exhibit. The product must be a major ingredient in the recipe to qualify for this division. Ingredients such as oil used to brown meat, as a garnish, or a spice or herb in the recipe do not qualify as a major ingredient.
2. Members entered in this category must also have some general knowledge beyond nutrition and food safety about this year's contest ingredient or food.

See the *Colorado Specialty Foods Category Supplement* for rules, guidelines, and 2020 designated ingredient. Adults cannot help contestant do prep work in the kitchen or set up display. To do so may forfeit all awards won. They may help transport heavy or breakable items, boxes, etc., as needed.

NOTE: Juniors and Intermediates are not to prepare deep fat fried foods due to safety concerns.

**Awards:**

A Champion and Reserve Champion will be designated in each age group — Individual, Team and Specialty Divisions. An overall Grand Champion and Reserve Grand Champion will be designated in each age group. Participants will vote for a Cook's Choice Award in their age group.

Grand Champion Senior exhibitor(s) will win the opportunity to be a Colorado Delegate to Western National Roundup. Depending on the availability of funds, partial support may be available from the Colorado 4-H Foundation.



## 2020 Colorado Specialty Foods Category

1. Members entered in this category or classes must use the 2020 designated food or ingredient in their Creative Cooks exhibit. The product must be a major ingredient in the recipe to qualify for this division. Ingredients such as oil used to brown meat, as a garnish, or in a small amount in the recipe do not qualify as a major ingredient.

### 2020 Contest Ingredient is Peaches

**Peaches** originated from China where they were considered a symbol of long life. Peaches are a healthy addition to any diet. They are cholesterol, saturated fat and sodium free as well as a good source of Vitamin C.

Colorado ranks 6<sup>th</sup> in peach production in the United States, with over 2,400 acres of peach orchards. They account for over 75% of the fruit production in Colorado. The prime locations for peach growing in Colorado are Mesa, Delta, Montrose and Montezuma counties.

There are two types of peaches, freestone and clingstone. Freestone peaches are used for the fresh market, whereas clingstone peaches are typically used for canning and processing.

2. Members entered in this category must also have some general knowledge beyond nutrition and food safety about this year's contest ingredient or food. The list below is a sample of the type of information that they should discover about the food. The judge might ask one or two general questions appropriate to each age division.

- Location in Colorado where ingredient is grown in Colorado
- Part of the country or world where it is grown other times of the year
- Varieties of food, ingredient, crop
- Unique production or harvest methods
- Plant type or animal origin
- Specific cuisines or cultures that use a lot of this ingredient
- The "specialness" of the ingredient—may be flavor, nutritional or diet value, color, texture, trendiness, cost
- Special handling or preparing techniques
- Other uses for the product
- Any other knowledge or interesting facts members may discover



Members do not need to know all of the above. The above is guide for possible research searches.

3. Examples of contest food items and resources for 2020 Contest Ingredient – Peaches:

Pie	Main dishes with peaches – chicken/Pork
Cobbler	Ice Cream
Cakes with peaches	Jams, jellies, marmalades, preserves
And so much more!!	

*Resources:*

*Farm to Table – Colorado State University Peach Fact Sheet*  
<http://farmtotable.colostate.edu/docs/peachfactsheet.pdf>

*Palisade Peach Festival – History Page*  
<https://palisadepeachfest.com/history/>

*Colorado Ag in the Classroom Colorado Reader*  
[https://www.growingyourfuture.com/civi/sites/default/files/CO\\_Reader\\_Fruit\\_screen\\_12.pdf](https://www.growingyourfuture.com/civi/sites/default/files/CO_Reader_Fruit_screen_12.pdf)

# 2020 4-H Public Presentations Contests

## Demonstrations & Illustrated Talks, and Interpretive Reading

.....Superintendent

.....Interpretive Reading Superintendent

**Contest Dates:** Saturday August 29 & Sunday, August 30

**Time:** 8:00 am

**Location:** 4-H Auditorium – Colorado State Fairgrounds

**Participant's Entry Fee:** \$10 per person

**Registration Deadline: August 17**  
**Entry deadline will be Monday two weeks prior to State Fair.**  
**Online registration completed by August 10 is highly preferable.**

Each county office will issue **one check payable to Colorado State University/State Fair for county entry total.**

Mail by **Aug. 12** to:  
 Sharie Harless  
 CSU State 4-H Office  
 4040 Campus Delivery  
 Fort Collins, CO 80523-4040

**Age Divisions:** All ages are as of December 31 of the previous year:

- Juniors: 8-10 years' old
- Intermediates: 11-13 years' old
- Seniors: 14 and over

**Gate Passes:** Counties are responsible for ordering and distributing gate passes for contestants. Superintendent will not be sending passes.

**Lodging:** Lodging in the 4-H dorms and meals are available for purchase. Dormitory space is on a first-come, first-served basis.

### Demonstrations & Illustrated Talks

Class 443	Individual Junior
Class 444	Team Junior
Class 445	Individual Intermediate
Class 446	Team Intermediate
Class 447	Individual Senior
Class 448	Team Senior

### Interpretive Reading

Class 449	Interpretive Reading Junior
Class 450	Interpretive Reading Intermediate
Class 451	Interpretive Reading Senior

## **Public Presentation Contest Rules:**

Please see contest-specific section for additional rules pertaining to each division.

1. The contest will begin at 8 a.m. Awards will be given after each program. Superintendents will schedule each class after entries are received and will send a tentative schedule out to participants to let them know when they'll need to arrive.
2. Junior contestants are 8-10 years of age. Intermediate contestants are 11-13 years of age. Senior contestants must have passed their 14th birthday and must not have reached age 19 as of December 31 of the previous year.
3. Each county is limited to three entries per class. The top three blue ribbon winners from each age division and class can compete at the state contest. In addition to awarding blue ribbons using the Danish System, counties should have judges rank their top blue ribbons winners in each class to select State Fair entrants.
4. Exhibitor must be enrolled in 4HOnline.
5. Presentations must be directly related to 4-H projects or activities that members are enrolled in. 4-H members are asked to be sensitive to the diverse audience that attends the fair. All materials to be presented are subject to review by the county extension office. Materials which are deemed inappropriate by the county will not be allowed.
6. The only public presentation division that allows teams is Demonstration & Illustrated talk. A team shall consist of two 4-H members. Both team members may be from the same age division. If they are not, they must compete in the division of the oldest member.
7. Time limits are event and age specific. Two points will be deducted from the total score on each judge's score sheet for every 30 seconds over or under the event and age division time limits. After the individual has been introduced by the superintendent, the time will start once the contestant begins to speak and end when they stop speaking. For demonstrations, timing ends at the end of the presentation and does not include the question and answer period.

Please check the rules for each division for more details. Demonstration and Illustrated talks an additional five minutes is allowed for set-up and take down.

	Junior	Intermediate	Senior
Demo & Ill. Talk	4-6 min	6-8 min	8-10 min
Interpretive Reading	3-5 min	4-6 min.	6-8 min

8. Each individual and team will be expected to provide their own visual aids, props or special equipment. The contest will provide a table, projector, screen, microphone and easel. A podium will not be provided. A laptop will be present for presenters to use with the projector. Participants should bring their presentation on a flash drive. Participants are also encouraged to bring their own computer to present with (along with any special adaptors) as a backup. Please note when registering if you'll need to use the projector. If you have additional special needs, contact Connie Cecil at: [Connie.Cecil@colostate.edu](mailto:Connie.Cecil@colostate.edu). Early arrival on the contest day is suggested for setting up any equipment.
9. A tentative contestant order will be emailed to the contestants in advance of the contest. Contestants must contact the superintendents at the time of registration to notify them if they are competing in another event that may conflict with this contest. Attempts will be made to make accommodations within reason, and with advance notification.
10. Awards: Junior, Intermediate, and Senior team and individual participants will be ranked 1-10. There will be no Danish system ribbons (blue, red, white) awarded. Champion and Reserve Champion individuals and teams will be designated in each age division.

**Demonstrations & Illustrated Talk Division Rules:**

1. Each Demonstration and Illustrated Talk will be timed. Senior demonstrations must be between 8-10 minutes in duration. Intermediate demonstrations must be between 6-8 minutes in duration. Junior demonstrations must be between 4-6 minutes in duration. Two points will be deducted for each 30 second over or under the time limit. Participants will be given a 30-second warning before end of the time period. An additional five minutes is allowed for set-up and take down.
2. Only the judges will be asking questions to presenters at the end of their presentations. There will be no questions from the audience. Generally, each judge asks one question, but they may choose to ask a follow-up.
3. Special Awards: The two-state senior grand champion team members and the senior

individual grand champion demonstrator will each receive a partially paid educational trip to Western National 4-H Roundup. Winners of the demonstration contest must meet participation requirements for this event. Senior members who previously received a Western 4-H Roundup trip in team competition are not eligible to enter the team contest again but may enter individual competition. Members who received a Roundup trip in individual competition are not eligible to enter the individual contest again but may enter team competition. The top two demonstrations or illustrated talks in the Family Consumer Science area will receive a partially funded trip to compete at the Western National 4-H Roundup FCS (Family Consumer Science) Presentation Contest.

**Interpretive Reading Division Rules:**

1. Members deliver a rendition of a piece of pre-written material. The pre-written material should be a selection from a book, poem, story, etc., and should be 4-H appropriate (See General Rules). This area is not intended for presentation of original material written by the presenter. Members may choose which selection or multiple portions of a text to present but may not change the content. Content should be cohesive and transition smoothly from one portion to the next.
2. During the beginning of the reading, the speaker should introduce their piece and explain the significance of the material.
3. Costumes and small props can be used but they need to be simple and minimal, not detracting from the strength of the presenter. Everyone will be expected to provide their own equipment. General equipment and supplies such as tables and chairs will be furnished when requested in advance of competition (See General Rules).
4. Each Interpretive Reading will be timed. Senior readings must be between 6-8 minutes in duration. Intermediate readings must be between 4-6 minutes in duration. Junior readings must be between 3-5 minutes in duration. Two points will be deducted for each 30 second over or under the time limit. Participants will be given a 30-second warning before end of the time period.
5. Please note: There is no national level contest for this event and, now, contestants are not eligible for Western National 4-H Roundup.

# DOG TRIALS – 2020

..... General Superintendent  
Tina Wickizer..... Showmanship Superintendent  
Florence Andrews..... Tabulation Superintendent  
..... Obedience Superintendent  
Donna Darnell..... Rally Superintendent  
Kelsey Darnell..... Rally Team Superintendent  
Anne Janicki..... Volunteer Superintendent  
Mary Killen..... Silent Auction Co-Superintendent  
Pam McWilliams.... Silent Auction Co-Superintendent  
..... Agent Superintendent

**Saturday, August 29** All Obedience Classes;  
Intermediate Rally, Rally  
Advanced, Excellent and  
Masters; Rally Team  
Classes

**Sunday, August 30** Showmanship and  
Novice Rally Classes

**ALL RINGS WILL CLOSE AT 12:00 NOON UNTIL  
12:45 PM FOR LUNCH BREAK**

**Participant's Entry Fee: \$25 per 4-H member**

**Registration Deadline: August 10**

Entry deadline will be Monday two weeks prior  
to State Fair.

Online registration completed by August 10 is  
highly preferable.

**There will be no late registrations and no  
registration changes will be made the day of the  
shows.**

If your county contest is on or after this date, please  
contact Connie Cecil at  
[connie.cecil@colostate.edu](mailto:connie.cecil@colostate.edu).)

Each county office will issue **one check payable to  
Colorado State University/4-H Camp Tobin for  
county entry total.**

Mail by **August 10** to:  
Sharie Harless  
CSU State 4-H Office  
4040 Campus Delivery  
Fort Collins, CO 80523-4040

All 4-H Dog Health Certificates are to be on  
4HOnline. The county will complete the online  
portion of the registration process on behalf of its  
participants.

**NOTE: The 2020 Volunteer Help Form will be  
web-based and information on the link will be  
sent out to all 4-H dog members and leaders.  
Please have your leaders and parents go to the  
website and sign up.**

**The State Fair Dog Show is a 4-H  
show. As such, 4-H youth  
development principles are of primary  
importance.**

## **GENERAL CONTEST RULES:**

1. The Dog Trials will be held Saturday and  
Sunday, August 29 and 30, 2020. They will be  
held at the Colorado State Fair Events Center,  
starting with check-in from 7:30 – 8:30 a.m. on  
both days. **The Showmanship Test on Sunday  
will start at 8:00 am and go through until 9:30  
am. No test will be given after 9:30 am.**
2. Dates of approved currently effective  
vaccination of the dog for rabies, parvo, and  
canine distemper must be provided on the State  
4-H Dog Health Certificate. Each entrant is  
required to complete the **State Dog  
Identification on 4honline** and have it on file in  
their Extension Office by **May1<sup>st</sup>**. This form will  
be used at the State Fair Dog Show so make  
sure that all 4-H Dog members have completed  
this Dog ID.

**The following information on vaccinations and  
titers have been provided by veterinarians at  
Colorado State University:  
Recommendations to minimize the chance of  
infectious disease spread at the State 4-H Dog  
Show**

Ragan Adams, MA, DVM Veterinary Extension  
Specialist, CSU  
Dr. Michael Lappin DVM, PhD, DACVIM \*

(1) Show proof of vaccination for canine  
distemper virus and parvovirus within 3 years or  
serum titers indicating proof of effective  
immunity.

(2) **Current Rabies vaccination certificate.  
Titers are not accepted.**

(3) Do not bring dogs who have shown signs of  
respiratory (sneeze, nasal discharge, or  
cough), gastrointestinal (vomiting or  
diarrhea), or skin disease (open sores, crusty  
skin patches, or increased scratching) within  
7 days prior to show.

(4) Be prepared to have a cursory physical  
examination performed on your dog before  
entering the show grounds. Dogs with  
physical evidence of respiratory disease,  
gastrointestinal disease, or skin disease may  
have an infectious disease which could risk  
the health of other participants and will not  
be admitted on the show grounds.

(5) While at the show keep your dog(s) to themselves, do not share equipment between dogs from different households or kennels.

(6) Wash hands after handling other dogs and before handling your own dog.

Question about which reference to use on titers:

See AAHA guidance

[https://www.aaha.org/guidelines/canine\\_vaccination\\_guidelines/antibody\\_testing.aspx](https://www.aaha.org/guidelines/canine_vaccination_guidelines/antibody_testing.aspx)

CSU Veterinary Diagnostic Laboratory guidance for titer explanation: from Christie Mayo. Canine distemper virus (CDV) antibody SN Canine distemper titers of less than 1:2 (<1:2) indicate lack of immunity and susceptibility to infection with the field virus. Titers of 1:2-1:16 indicate limited protection against the field virus. Titers of 1:32 and higher indicate probable protective immunity; higher titers indicate better protection.

Canine parvovirus (CPV2) antibody HI Canine parvovirus titers of less than 1:8 (<1:8) indicate lack of immunity and susceptibility to infection with the field virus. Titers of 1:16-1:32 indicate limited protection against the field virus. Titers of 1:64 and higher indicate probable protective immunity; higher titers indicate better protection.

Dr. Mike Lappin is the Kenneth W. Smith professor in Small Animal Clinical Veterinary Medicine in the Department of Clinical Sciences at the College of Veterinary Medicine & Biomedical Sciences at Colorado State University in Fort Collins, Colo. He is also director of the Center for Companion Animal Studies.

3. Proof of Rabies vaccination must come from a licensed veterinarian or the dog is not legally considered vaccinated. If the member's dog receives Rabies immunizations which are given by anyone who is not a Colorado State licensed veterinarian, these immunizations will not be recognized by law should the dog bite someone.

4. Hybrid Dogs (wolf/coyote) will not be allowed to enter the Colorado State 4-H Dog Trials.

5. State Fair 4-H Dog Show officials and/or staff can and will dismiss any entrant or his/her family from the show for any mistreatment of dogs entered in this show. If a question should arise as to what constitutes "mistreatment," State 4-H staff and/or officials will meet to decide appropriate action in each case.
6. Any negative behavior on the part of the exhibitor, family members or leaders directed toward any official will result in disqualification and awards forfeited. If there is a question as to the rules or the judging of a class, adult family members or leaders must approach the Superintendent of that division and **not the judge**. The Superintendents will then take the question to the judge if warranted.
7. Dogs which are deemed to be a danger to people or other dogs can and will be removed from the show grounds and all classes forfeited. This will be determined by a consensus of the Superintendents.
8. Protests must be submitted in writing and presented to the superintendent(s) within 24 hours after judging is announced. Protests will be handled first by the superintendent(s) and then reviewed by State 4-H Office personnel. A fee of \$50 must accompany any protest. If the protest is upheld, the fee will be returned. If the protest is not upheld, the fee will be kept and deposited into the State Dog Project Fund.
9. All entrants will be responsible for clean-up after their dogs. Failure to do so can be a basis for dismissal from the State Fair 4-H Dog Show and/or forfeiture of any placing.
10. Show management will have final decision authority. If needed, show management may request assistance with arbitration from a committee comprised of the show superintendents, the judge (if willing), and the leader and/or agent from county involved (if present).
11. **Colorado State 4-H Dress Code**  
This dress code is to be followed by all Junior, Intermediate, and Senior 4-H members, as well as adult leaders, advisors, and chaperones at all Colorado State 4-H sponsored events including but not limited to the Colorado State Fair 4-H Dog Trials. Deviations from the dress code will result in a request to change. This dress code is not subject to personal interpretation. A state officer, adult leader, advisor, or chaperone may deem clothing inappropriate. In addition, some activities or events will have specific dress requirements that will need to be followed.

**Appropriate dress consists of:**

- **Clothes are clean and in good repair, free of holes, tears, or slashes.**
- **Clothes are free from violent or drug-related material, or anything that alludes to violations of the 4-H Code of Conduct.**
- **Shorts must be mid-thigh length. No cut-off shorts allowed.**
- **All items designated as underwear are kept under cover.**
- **No halter-tops, tube tops, or top that expose undergarments.**
- **No pants or shorts that expose undergarments.**
- **No spaghetti straps on shirts or dresses, except for formal attire, or when under suit jackets. If the suit jacket is removed, the shirt must be covered by another means.**
- **No see-through garments or muscle shirts.**
- **Shoes must be worn always. Proper foot attire for dog showing are shoes which are closed-toed. No flip-flops, sandals, or other open-toed shoes will be allowed in the show ring for any class.**
- **No pajamas during the show**

*10.A. Appropriate clothing must be worn in all dog show classes, including Obedience and Rally. Not only in the rings but when you are out of the ring.*

*10.B. The member will be given 5 minutes to change into an appropriate outfit if the judge or Superintendent deems their clothing inappropriate.*

*10.C. If the clothing has been deemed inappropriate by a judge or Superintendent, the member can be denied the opportunity to show their dog until the clothing has been changed.*

*10.D. It is always a good idea to have another person observe you before you go into the ring making sure that the clothing you are wearing is appropriate when bending, stooping or kneeling while showing your dog. If it is not, it is advisable to change clothes.*

**Youth need to stay in their dress clothes for showmanship until runoffs are announced.**

12. The general age groups for Dog Project are:  
Junior 8-10 years  
Intermediate 11-13 years  
Senior 14-18 years  
Age is determined by the member's age as of December 31, 2019

13. No dogs are allowed beyond the immediate vicinity of the Events Center. Exhibitors are encouraged to use service gate #6 on Small Avenue. 4-H members will be allowed to load and unload but must re-entry through Gate # 5 Prairie Ave.
14. No participants or their family members will be allowed to use skateboards, rollerblades, or run in the Event Center. Outside of the Event Center, State Fair rules regarding these issues are posted by State Fair authorities.
15. Dogs must be on a leash always except when performing exercises off leash in the show ring.
16. Entrants will be assigned armband numbers through 4HOnline and can be picked up the day of the show. Armband numbers will be the same for Saturday and Sunday events. Armband numbers will be the same for all dogs entered both days.
17. No set-up will be allowed anywhere near the rings. Allowable set-up areas will be designated and no one will be allowed to set up in any other areas. Spectators must stay at least ten feet from the ring.
18. State Fair qualifier ribbons will be given out as the exhibitor exits the ring by the judge and steward. Overall placing scores, prizes, and score sheets will be given out at the day's closing ceremony.
19. If a dog has failed an exercise, it will not ordinarily be re-judged unless the judge feels the dog's performance was prejudiced by peculiar and unusual conditions. In such a case, the judge may wish to re-judge the dog only on the portion of the exercise in which the unusual condition occurred.

**20. NO Entered or Unentered DOGS WILL BE ALLOWED IN ANY OF THE LIVESTOCK BARNS or anywhere on the Fairgrounds. Puppies must be crated and are not allowed in the main arena area or anywhere else on the Fairgrounds.**

**IN ALL CLASSES, RUN OFFS WILL BE ANNOUNCED THREE TIMES IN FIVE MINUTES. If the youth is not present after this time, his/her run off chances are will be forfeited**

## EXHIBITOR ELIGIBILITY RULES:

- A. Member must be enrolled in the 4-H Dog Project.
- B. All exhibitors must have complied with each county's eligibility rules for State Fair participation. Exhibitors must enter State Fair in the same class in which they qualified at their county level.
- C. The member must own his/her project dog individually or in partnership with immediate family members or guardians during the complete duration of the project year. No leased dogs will be allowed to show at State Fair. If requested the member must have proof of ownership of the dog at the time of entry and provide that to the superintendents. The member must provide the majority of care for the dog(s).
- D. Any member exhibiting his/her dog at the State Fair 4-H Dog Trial must be an official representative of his/her county. Each county's official(s) are responsible for entering participants in this show. No member will be allowed to substitute for another exhibitor on the day of the show if not properly entered by his/her county.
- E. All exhibitors must have at least one qualifying score in each class of exhibition. Qualifying scores are 170 and above in obedience, 170 and above in showmanship and 70 and above in rally. An acceptable record book must be done and meet all guidelines required by their county for State Fair qualification.
- F. Each exhibitor may exhibit a different dog in obedience, showmanship and rally provided they meet qualifications (refer to rule C). A member may be entered in multiple Obedience or Rally classes with different dogs, but each member may only enter Showmanship one time.

## DOG ELIGIBILITY RULES:

- A. After once earning a qualifying score in competition as a 4-H project dog in Obedience or Rally at the State Fair, that same dog is no longer eligible for exhibition in that same division at any following State Fair except Obedience: Grad Novice, Open, Grad Open and Utility classes; Rally Advanced-Excellent and Masters.
- B. If a dog has received a qualifying score in Obedience - Grad Novice, Open, Grad Open, Utility, or Rally -Advanced/Excellent, **Masters** at a previous State Fair, they may stay in that same class as a "B" level competitor for as long as they need to complete the training required for them to move up to the next class.
- C. A dog with any other rally or obedience title from any national dog association (AKC, UKC, CKC, ASCA, etc.) is disqualified from

entering the class for which the degree was awarded, or any lower class, except if that title was won less than four months before the State Fair. If the title was won less than four months before the 4-H State Dog Trial the dog is eligible for entry in the same class. If the dog receives title more than 4 months before the State Fair Dog Trial, they must move up to the next class. The exceptions to this titling rule are Obedience:

- a. – Grad Novice, Open, Grad Open, Utility; and Rally Advanced/Excellent and Masters.

### Rule C Examples:

1. Dog is awarded a Rally Novice title at the Terry All Kennel Club Show on April 12. State Fair Rally competition is August 28.
    - b. That is more than 4 months away. The team must move up to Intermediate Rally A in 4-H competition.
  2. Dog is awarded a Rally Novice title at the Greeley Kennel Club Show on August 14. State Fair Rally competition is August 28.
    - c. That is less than 4 months. The team may compete in Rally Novice at the 4-H competition.
- D. No bitch in heat, obviously pregnant or lactating bitches will be allowed to compete in any classes at the State Fair.
  - E. Dogs in obvious pain from a previous illness or injury shall not be shown. If a dog is injured at a show, that dog will be excused from the ring. Consideration of a dog's physical disability needs to be addressed between the handler and project leader before starting the project. A State-Fair-approved veterinarian or qualified veterinarian technician's decision on doubtful cases will be accepted as final.
  - F. No dog other than the county-qualified dog will be eligible to show or compete at state fair. Should any problem arise with the dog designated as the county-qualified dog, the Extension agent must be notified for any course of action.
  - G. If the County qualified dog in Showmanship is injured or in season, a replacement dog may be used at the approval of the County Superintendent. The replacement dog must fulfill all the "dog eligibility requirements", must be registered in 4HOnline. If requested the health certificate must accompany the dog to the State Dog Trial and be presented to the General Superintendent. If the member chooses to show a dog who has not been carried as a project animal for the current project year, the member must show as exhibition only.



**SHOWMANSHIP-SUNDAY, August 30:**  
**Showmanship Class Eligibility Requirements:**

***A test will be given to each contestant entered in Showmanship. The exhibitor is responsible for taking this test between 8:00 and 9:30 am on Sunday. No tests will be given after 9:30 am. If an exhibitor does not take the test by 9:30 am, then that portion of the showmanship score sheet will result in a score of zero.***

**CLASS 500 Junior Novice Showmanship**

This class is for members who are 8 –10 years old as of December 31 of the previous year, are in their 1st year of participation in the project and have no prior experience with any other dog showing entity.

**CLASS 501 Junior Open Showmanship**

This class is for members who are 8-10 years old as of December 31 of the previous year and have previous experience in showmanship.

**CLASS 502 Intermediate Novice Showmanship**

This class is for members who are 11-13 years old as of December 31 of the previous year, are in their 1st year of participation in the project and have no prior experience with any other dog showing entity.

**CLASS 503 Intermediate Open Showmanship**

This class is for members who are 11-13 years old as of December 31 of the previous year and have previous experience in showmanship.

**CLASS 504 Intermediate Advanced Showmanship**

This class is for members who are 11-13 years of age as of December 31 of the previous year. Any member who has placed 1<sup>st</sup> through 10<sup>th</sup> at a previous State Dog Trial Intermediate Open Showmanship must enter Intermediate Advanced Showmanship

**CLASS 505 Senior Novice Showmanship**

This class is for members who are 14-18 years old as of December 31 of the previous year, are in their 1st year of participation in the project and have no prior experience with any other dog showing entity.

**CLASS 506 Senior Open Showmanship**

This class is for members who are 14-18 years old as of December 31 of the previous year and have previous experience in showmanship

**CLASS 507 Senior Advanced Showmanship**

This class is for members who are 14-18 years of age as of December 31 of the previous year. Any member who has placed 1st through 10th

at a previous State Dog Trial in Senior Open Showmanship must enter Senior Advanced Showmanship

**Class 508 Master Showman Class**

- Intermediate and Senior Grand Champion and Reserve Grand Champion Showmen from any previous State 4-H Dog Trial are required to enter the Master Showman class.
  - If the youth is in the Intermediate age group, when they become a Senior (at age 14) they can either stay in the Master Showman class or move to the Senior Advanced class only.
  - If the youth who has shown in Master Showman in past years should get a new dog, they may choose to either stay in the Master Showman class or to enter the Advanced class in whichever age division they belong in (Intermediate or Senior).
  - Once a youth has won Grand Champion Master Showman they are required to show in Master Showman for their remaining years as a 4-H member with the same dog they won Grand Champion.
1. Junior, Intermediate and Senior Novice classes are for those members who are in their first year of showmanship training and have no prior outside showmanship experience as determined by the county. If prior experience is determined by the county, the exhibitor must move into open class competition in his/her appropriate age group.
  2. Showmanship Classes: Each county is limited to **four entries per class** for any showmanship class for a total of 32 entries. There is no limit on entries for Master Showman, if eligibility has been met.
  3. Each member entered at the State Dog Trial **must** have earned a qualifying score of 170 or above at a 4-H dog show during the project year.
  4. Each individual county has jurisdiction over how a member earns their qualification for entering the State Dog Trials.
  5. Rules governing Intermediate and Senior Advanced Showmanship
    - a. Any member who has placed in the top 10 in the Intermediate or Senior Open classes at any previous State Fair must show in Intermediate or Senior Advanced Classes for their remaining years in that age group. If a member who has shown in the Intermediate or Senior Advanced classes gets a new dog, they have the choice to either continue showing Advanced classes or move back to Open Class in their respective age groups. If the member chooses to move back to Open

Class in their respective age group with a new dog, they must then qualify the new dog to move to the Advanced classes by placing in the top ten at State Fair.

- b. A Senior member who has moved up by age from either the Intermediate Open or Advanced class may choose to show in Senior Advanced by advice of their leader and taking into consideration the caliber of the member. Some reasons for choosing this move are:
  - The member placed Grand Champion or Reserve Grand Champion at a State Fair Dog Show in the Intermediate Division.
  - The member has received Best Junior Handler awards from any national dog club.

#### **General Tips for Showmanship:**

6. A brush, comb and a drool rag will be allowed in the ring. No other equipment is permitted.
7. Depending on what you are wearing in the showmanship ring, use proper kneeling etiquette. If you are in a skirt, it is best to kneel on both knees. If you are wearing pants, it would be appropriate to kneel on only one knee. See 10D in the dress code.
8. Members with smaller breeds will be expected to show their dogs on a table. Judges will take into consideration the size and physical abilities of the handler. A list of most of the table breeds can be found in the project manual on page 110. A more complete list is available on the American Kennel Club website at [www.akc.org](http://www.akc.org).
9. If the member is showing a mixed-breed dog; they should determine what breed their dog most resembles and show in the manner of that breed. If you have a mixed breed dog, you can go to AKC website and look at different pictures of the breeds of dog to decide which breed your dog looks most like. –see Dog Manual pg. 111.
10. No dog tags should be on the dog when showing in the ring. Only the correct equipment for a showmanship class should be used. It is very important that your dog wear tags always, except when in the show ring.
11. A showmanship score sheet will be used for 2020. Questions will not be asked in the showmanship ring by judges, but rather by trained volunteers or superintendents in a separate area. Youth will have the choice of either answering these questions verbally or on paper. Youth will have until **9:30 am on Sunday** to answer the questions. The area will be marked where questions will be asked.
12. The format for showmanship score sheet includes:  
<http://co4h.colostate.edu/program-areas/state-fair-information/contest-score-sheets/>

A Qualifying Score will be 170 points out of the possible 200 points. Please note: During the Showmanship class each area of judging will be judged throughout the entire class. The score will reflect the member's ability to perform these items throughout the class, and not just one time. For example: the dog should be stacked (either hand stacked or free stacked) upon entering the ring, during the exam, after the pattern, and any time they are in the line-up. The "set-up" score will reflect these times when the dog is stacked.

## **OBEDIENCE**

### **Obedience Class Eligibility Requirements**

- A. All 4-H obedience classes will be patterned after the latest AKC obedience guidelines whenever possible, except that dog registry with AKC is not required. Some exercises and rules may have been adapted from AKC to better serve the youth of this program.
- B. In all classes except Puppy Class, ten points will be deducted in the obedience classes for the following: strong correcting, disciplining, fouling the ring, excessive barking, leaving the ring, rules violation or showing fear.
- C. Handlers entered in B classes will be judged at a higher skill level (handler errors) than handlers entered in A classes.
- D. Allowed collars in Obedience classes include: Flat or rolled leather with buckle or snap closure. Flat or rolled nylon collars with buckle or snap closure. Metal choke chain. No halties, gentle leaders, harnesses, or pinch collars will be allowed in the show ring. Collars and leads must be 2 separate pieces. Slip leads are not allowed.
- E. The length of your obedience leash should be six feet for all Beginner Novice classes, but may be shorter for all other classes.
- F. No dog tags can be on the dog when showing in the ring. This includes name tags, rabies tags, or anything else that hangs from the dog's collar. It is very important that your dog wear tags always, except when in the show ring.
- G. If an exhibitor has two dogs in the same class, they must choose one dog for sits and downs. The other dog must be handled by a currently enrolled 4-H member enrolled in the dog project for sits and downs.
- H. Each county may enter exhibitors in obedience classes (by a selection procedure most appropriate to its own county program) according to the following quota:

### **BEGINNER NOVICE DIVISION:**

- A. Beginner Novice A: four exhibitors per county (this is a first-year class for the handlers and their dogs). This class is open only to handlers and their dogs in their first year of dog obedience training work.
- B. Beginner Novice B: four exhibitors per county. This class is open only to second-year dog obedience training members and must be the same youth and dog team that showed in 2019 in Beginner Novice A.
- C. Beginner Novice C – 1<sup>st</sup> year: four exhibitors per county. This class includes members with previous obedience training who are working with a new dog **or** a dog with previous experience in an organized training class working with a new 4-H member. All exercises will be performed on leash.
- D. Beginner Novice C – 2<sup>nd</sup> year: four exhibitors per county. This class is open only to those in the second year of Beginner Novice training and must be the same youth and dog team that showed in 2019 in Beginner Novice C -1<sup>st</sup> year.

### **NOVICE DIVISION:**

- A. Novice A: four exhibitors per county. This class is open to members with no prior experience in Novice Dog Training.
- B. Novice B: four exhibitors per county. This class is open to experienced members in their second year or above who have never received a qualifying score at a previous state fair in this class.

### **GRADUATE NOVICE DIVISION:**

- A. Pre-Grad-Novice A: four exhibitors per county. This class is open to members with no prior experience in Pre-Grad Novice Dog Training. This class was previously called "Grad Novice".
- B. Pre-Grad-Novice B: four exhibitors per county. This class is open to experienced members in their second year or above of Pre-Grad Novice 4-H Dog Training. This class was previously called "Grad Novice".
- C. Grad Novice A: Unlimited number of entries per county. This class was previously called "Pre-Open". The name has been changed to more closely follow AKC class names. This class is for members in their 1st year of Grad Novice training.
- D. Grad Novice B: Unlimited number of entries per county. This class was previously called "Pre-Open". The name has been changed to more closely follow AKC class names. This class is for members in their 2nd or higher year of Grad Novice training.

### **ADVANCED DIVISION**

Open A&B, Grad Open A&B and Utility A&B:  
unlimited number of exhibitors per class, per county.

### **VETERANS DIVISION**

- A. Any dog 7 years old or over may be shown in the Veteran's Division.
- B. Veteran Division dogs will be allowed/required to jump ½ of their regulation jump height. They will be required to perform all exercises in their class; jump height will be the only difference from the regular class.
- C. Once a veteran dog can no longer jump at least ½ their regulation jump height they must be moved to a class that does not require jumping. Members, parents, trainers, and leaders cannot determine a jump height for a dog. They will be judged at ½ their required jump height.
- D. Dogs shown as a Veteran are eligible for Champion and Reserve Champion in each class in the Veteran's Division and a Grand and Reserve Grand overall will be awarded to the highest scoring dogs in the Veteran's Division.
- E. It is the choice of the member, the member's parent, and the member's trainer and veterinarian as to giving a dog Veteran's designation.
- F. Veteran dogs will compete at the obedience level the member chooses, from Novice up through Utility.
- G. A veteran dog may change obedience levels in either direction each year as their health determines.
- H. Scores will be calculated as follows:
  - a. Novice: judge's score
  - b. Pre-Grad-Novice: judge's score plus 3 points
  - c. Grad Novice: judge's score plus 6 points
  - d. Open: judge's score plus 9 points
  - e. Grad Open: judge's score plus 12 points
  - f. Utility: judge's score plus 15 points
- I. If a dog is entered as a Veteran during a project year, they may go back to regular obedience the following year; however, they must go back to the level they would have been competing at before they moved to veterans.

### **JUMP INFORMATION**

- J. The dog must jump their required height and width for their class. For the broad jump the correct number of boards must be used for the width being jumped. Refer to the chart for proper jump regulations.
- K. Broad Jump Heights  
\*Four boards are used for 48-72 inches

\*Three boards are used for 28-44 inches

\*Two boards are used for 16-24 inches

When decreasing the number of boards in the broad jump, the highest hurdle is removed first.

<b>STANDARD JUMP HEIGHTS:</b>	
<b>Measured height of dog at withers</b>	<b>Minimum height to be jumped</b>
Less than 7 ½"	4 inches
7-1/2 to 9"	8 inches
Greater than 9" up to 11"	10 inches
Greater than 11" up to 13"	12 inches
Greater than 13" up to 15"	14 inches
Greater than 15" up to 17"	16 inches
Greater than 17" up to 19"	18 inches
Greater than 19" up to 21"	20 inches
Greater than 21" up to 23"	22 inches
Greater than 23" up to 25"	24 inches
Greater than 25" up to 27"	26 inches
Greater than 27" up to 29"	28 inches
Greater than 29" up to 31"	30 inches
Greater than 31" up to 33"	32 inches
Greater than 33" up to 35"	34 inches
Greater than 35" up to 37"	36 inches
Greater than 37"	36 inches

### CLASS NUMBERS

#### **BEGINNER NOVICE OBEDIENCE DIVISION**

CLASS 509	Puppy Class
CLASS 510	Beginner Novice A
CLASS 511	Beginner Novice B
CLASS 512	Beginner Novice C – 1 <sup>st</sup> year
CLASS 513	Beginner Novice C – 2 <sup>nd</sup> year

#### **NOVICE OBEDIENCE DIVISION**

CLASS 514	Novice A
CLASS 515	Novice B

#### **GRADUATE NOVICE OBEDIENCE DIVISION**

CLASS 516	Pre- Graduate Novice A
CLASS 517	Pre- Graduate Novice B
CLASS 518	Graduate Novice A
CLASS 519	Graduate Novice B

#### **ADVANCED OBEDIENCE DIVISION**

CLASS 520	Open A
CLASS 521	Open B
CLASS 522	Graduate Open A
CLASS 523	Graduate Open B
CLASS 524	Utility A
CLASS 525	Utility B

#### **VETERAN'S DIVISION**

Class 526	Novice Veterans
Class 527	Pre- Graduate Novice Veterans
Class 528	Graduate Novice Veterans
Class 529	Open Veterans
Class 530	Graduate Open Veterans
Class 531	Utility Veterans

The best way to check what is expected in the various classes is to check out the score sheet posted on the Colorado State 4-H website: <http://co4h.colostate.edu/program-areas/state-fair-information/contest-score-sheets/>. A guide to what is expected in each class is being developed and will be posted soon to the 4-H website. You may also check on the AKC website for information but know that 4-H requirements might vary from AKC requirements. The Ohio State 4-H Dog Handbook can also be of help.

#### **Breed Exceptions – Jumps:**

Some breeds, because of their conformation, have exceptions granted for their jump heights. Please check the AKC Website under the obedience rules for the current chart of exceptions of breeds for these jumps. The website for AKC is: [www.akc.org](http://www.akc.org)

#### **RALLY**

**CHANGE FOR 2020: The Colorado State 4-H Dog Trial will be including Rally Masters as an OPTIONAL class.**

**Saturday, August 29: Rally Intermediate, Advanced, Excellent and Masters; Rally Team Classes**

**Sunday, August 30: Novice Rally Classes**

Please Note: The Colorado State 4H Dog Program has adopted changes to the Division as were outlined by the American Kennel Club in November 2017. Please note: Some signs have been added and renumbered.

All 4-H Rally classes will be patterned after the latest AKC obedience guidelines whenever possible, except that dog registry with AKC is not required. Some exercises and rules may have been adapted from AKC to better serve the youth of this program.

**There are no classes for veteran dogs. All dogs must be able to do the required items.**

- A. In all classes a non-qualifying (NQ) will be administered in the Rally classes for the following: minimum requirements not met, do unmanageable, uncontrolled barking, consistently tight lead, dog that eliminates while in the ring for judging, handle error, non-qualifying errors may not be re-tried, sign not attempted by handler. A sign will be considered not attempted if: handler

completely passes the sign; handler approaches sign but does not attempt it.

- B. Handlers entered in B classes will be judged at a higher skill level (handler errors) than handlers entered in A classes.
- C. Allowed collars in Rally classes include: Flat or rolled leather with buckle or snap closure. Flat or rolled nylon collars with buckle or snap closure. Metal choke chain. No halties, gentle leaders, harnesses, or pinch collars will be allowed in the show ring. Collars and leads must be 2 separate pieces. Slip leads are not allowed. No dog tags can be on the dog when showing in the ring. This includes name tags, rabies tag, or anything else that hangs from the dog's collar. It is very important that your dog wear tags always except when in the show ring.
- D. All jump heights will conform with current (as of November 2017 rules and regulations) AKC height and broad jump recommendations.
- E. Each member will be allowed only one run in each class with the dog who has qualified for that class.
- F. Walk-throughs will be announced. Youth will not be allowed to walk through the pattern at any time other than the official walk-through time.
- G. Please refer to the Colorado State 4-H Dog Project Rally Obedience Rules and Regulations for Exhibitors, Judges and Stewards for complete information.
- H. Each county may enter exhibitors in Rally classes (by a selection procedure most appropriate to its own county program) according to the following quota:
  1. **Rally Novice A Class** – This class is for members and their dogs in their first year of Rally training who have not received a qualifying score at any State 4-H Dog Trial and/or have not received an equivalent title from any national dog association. A member may only compete in Rally A for one year.
  2. **Rally Novice B Class** – This class is for any member who is in their second year or above of Rally training with the same dog used in the Rally Novice A Class or who is starting a dog that has never competed in Rally. Members can compete in this class until they have obtained a qualifying score at a State 4-H Dog Trial or the dog being shown has received an equivalent title from a national dog association.
  3. **Rally Intermediate A Class** – This class is for members in their first year of Intermediate Rally training. Members in this class will have achieved a qualifying score of 70 or above in Novice Rally at a previous State 4-H Dog Trial but have never

competed in the Advanced Rally division.

Members in this class do not have an equivalent of an Intermediate Rally title from any national dog association that was attained 4 or more months prior to the 2020 State 4-H Dog Trial. If the dog and handler team has received the equivalent of an Intermediate Rally title from any national dog association less than 4 months prior to the 2020 State 4-H Dog Trial, they may still compete in Intermediate Rally.

This class is done on lead and there are no jumps in the pattern.

4. **Rally Intermediate B Class** –

This class is for any dog and member team that is in their second or above year in Rally Intermediate training and has not received a qualifying score in Rally Intermediate at a previous State 4-H Dog Trial. If the dog/handler team has received the equivalent of an Intermediate Rally title from any national dog association 4 or more months prior to the 2020 State 4-H Dog Trail, that team must move to the Advanced Rally class. If they have never competed in Advanced Rally before, they will move to the 'A' class. If they have competed in Advanced Rally before they will compete in the 'B' class.

This class will be on lead and no jumps will be used in the pattern.

5. **Rally Advanced A Class** –

Rally Advanced A is for members in their first year of Rally Advanced training. The dog and handler team may not have received an equivalent title from any national dog association. A member may only compete in Rally Advanced A class for one year.

Advanced Rally is to be done off lead and any of the three jumps may be used in the class.

6. **Rally Advanced B Class** –

This class is for any member who is in their second year or above of Rally Advanced Obedience. Members can compete in this class until they have obtained a qualifying score at a State 4-H Dog Trial, or the dog being shown has received an equivalent title from a national dog association.

Advanced Rally is to be done off lead and any of three jumps may be used in the class.

7. **Rally Excellent A Class** –

Rally Excellent A Class is for members who are in their first year of Rally Excellent training who have not received a qualifying score in Rally Excellent at any State 4-H Dog Trial, and/or have not received an

equivalent title for any national dog association. A member may only compete in the A class for one year.

8. **Rally Excellent B Class** –  
This class is for any member who is in their second year or above of Rally Excellent training. Members can compete in this class until they have obtained a qualifying score at a State 4-H Dog Trial, or the dog being shown has received an equivalent title from a national dog association.
9. **Rally Advanced/Excellent A** –  
This class is for members who have received a qualifying score in Rally Excellent at a previous State 4-H Dog Trial or who has received the equivalent of an Excellent title from a national dog association. This class is for members in their 1st year of Advanced/Excellent training.
10. **Rally Advanced/Excellent B** –  
This class is for members who have received a qualifying score in Rally Excellent at a previous State 4-H Dog Trial or who has received the equivalent of an Excellent title from a national dog association. This class is for members in their 2nd year or above of Advanced/Excellent training. A member receiving the equivalent National title may continue to compete in this class for their remaining years in the program.

For Rally Masters: it is optional for a member to move up to Masters after Rally Advanced/Excellent. However, once the member and dog team has shown in Rally Masters at the State 4-H Dog Trial, that member/dog team is no longer eligible to compete in a lower level class.

11. **Rally Masters A** -  
This class is optional for any member in their first year of Rally Masters training. The member needs to have earned a qualifying score in Rally Advanced/Excellent at a previous State 4-H Dog Trial.
12. **Rally Masters B**-  
This class is optional for any member in their second year or above in Rally Masters training. A member may continue to compete in this class for their remaining years in the program.

**ENTRIES:** Each county may enter the following members as designated by each county's qualification rules:

- |                  |  |
|------------------|--|
| <b>CLASS 532</b> | <b>Rally Novice A: 4 entries</b>                 |
| <b>CLASS 533</b> | <b>Rally Novice B: 4 entries</b>                 |
| <b>CLASS 534</b> | <b>Rally Intermediate A: 4 entries</b>           |
| <b>CLASS 535</b> | <b>Rally Intermediate B: 4 entries</b>           |
| <b>CLASS 536</b> | <b>Rally Advanced A: 4 entries</b>               |
| <b>CLASS 537</b> | <b>Rally Advanced B: 4 entries</b>               |
| <b>CLASS 538</b> | <b>Rally Excellent A: 4 entries</b>              |
| <b>CLASS 539</b> | <b>Rally Excellent B: 4 entries</b>              |
| <b>CLASS 540</b> | <b>Rally Advanced/Excellent A:<br/>4 Entries</b> |
| <b>CLASS 541</b> | <b>Rally Advance/Excellent B;<br/>4 Entries</b>  |
| <b>CLASS 542</b> | <b>Rally Masters A: Unlimited</b>                |
| <b>CLASS 543</b> | <b>Rally Masters B: Unlimited</b>                |

**CLASS 544 Team Rally – 2 Team Entries**

- Counties may enter up to two teams of four members. **Counties need to enter each person separately and specify in the description what team they will be on. Example: Sadie Smith -entry; description: Boulder Team 1.**
- Counties may put together teams as they deem fit. But the teams must be entered in 4HOnline by the State Fair entry deadline.
- If a county does not have four members and youth still wants to enter, it will be the responsibility **of the county** to find extra members and get them entered correctly . **State 4-H Dog Trial Superintendents will no longer build teams on site.**
- Only one dog per youth on a team.
- Only youth who have competed at the **INTERMEDIATE LEVEL or ABOVE** may be entered on a Rally Team. Members who have only competed as a Rally Novice or who have never competed in Rally before are not eligible for a Rally Team
- Five dogs may be entered, one to be considered an alternate.
- Alternate dog is a dog that is a back-up for any one of the four actual performing dogs that, for any reason, cannot perform. Alternate dogs will only be allowed to compete for the team they are assigned as an alternate. Alternates will not be used to create more teams.
- If an alternate dog is to be used, ring stewards and judge must be notified which dog is being switched out for the alternate 15 minutes before the teams start so that the score sheet can reflect the change
- No dog may be used on more than one team.
- Champion and Reserve Champion ribbons will be awarded to the top two winning teams.
- Total team scores will be determined by the four-member's individual (alternate's score

to be count if he/she was properly entered as a substitute).

- If a county already has the two teams filled, they cannot enter any more youth.

Team rally is for any 4-H youth member who is interested in running rally as a team. Teams will compete against each other for the highest score as a whole team. The total possible score in team rally is 400. If there is a tie, the tie will be broken by the team with the quickest time. All team members will run the course individually, with the team time running continuously. Time will start when the judge gives the first member of the team the forward command from the "Start" sign. The subsequent dog for each team starts when the previous handler for the team passes the "Finish" sign without an additional command of "Forward" by the judge. Timing for each team will begin when the judge commands the first handler in the team to begin with the command "Forward" and will stop when the fourth handler from the team passes the finish line.

#### **COLORADO STATE 4-H AGILITY RULES**

For the State 4-H Agility Contest, 4-H members will need to qualify to compete in this contest.

This contest will be held on **Saturday, September 19, at the El Paso County Fairgrounds, Calhan, CO**

#### **COLORADO STATE 4-H AGILITY RULES**

- Class 550 Foundation Standard**
- Class 551 Novice Standard-Regular**
- Class 552 Novice Standard-Veteran**
- Class 553 Intermediate Standard -Regular**
- Class 554 Intermediate Standard-Veteran**
- Class 555 Advanced Standard-Regular**
- Class 556 Advanced Standard -Veteran**
- Class 557 Foundation Jump**
- Class 558 Novice Jump-Regular**
- Class 559 Novice Jump -Veteran**
- Class 560 Intermediate Jump -Regular**
- Class 561 Intermediate Jump-Veteran**
- Class 562 Advanced Jump -Regular**
- Class 563 Advanced Jump -Veteran**

**Agility Rules will be posted soon on the website.**

**AGILITY WAIVER** --will be posted soon on the website.

#### **OBEDIENCE, SHOWMANSHIP, AND RALLY AWARDS:**

All participants will receive a "State Fair Qualifier" ribbon. The American System will be used to rank the 4-H dog trial participants. First through tenth place ribbons will be awarded in Obedience for scores over 170 that have received 50 percent or more of the maximum point value of that exercise; Showmanship scores of 170 or above; and Rally Scores of 70 and above.

Trophies and rosette ribbons will be awarded to the member scoring the highest point total in the following classes:

#### **Overall Grand and Reserve Grand Champions**

- ✓ Junior Novice and Open Showmanship
- ✓ Intermediate Novice, Open and Advanced Showmanship
- ✓ Senior Novice, Open, and Advanced Showmanship.

\*A special award will be given to the Grand and Reserve Grand Champion in the Master Showman Class.

Prizes and rosette ribbons will be awarded to the member scoring the highest point total in the following classes:

#### **Overall Grand and Reserve Grand Champions**

- Beginner Novice A, B, C (1<sup>st</sup> and 2<sup>nd</sup> year Obedience)
- Novice A & B Obedience
- Grad Novice Obedience Classes (Pre-Grad Novice A, B and Grad Novice A, B)
- Advanced Obedience Classes (Open A, B and Grad Open A, B, and Utility A, B)
- Veterans Classes (All from Veteran's classes)

Trophies and rosette ribbons will be awarded to the member scoring the highest point total in the following classes:

#### **Overall Grand and Reserve Grand Champions**

##### **Rally**

Novice A & B  
Rally Intermediate A & B  
Rally Advanced A & B  
Rally Excellent A & B  
Rally Advanced/Excellent A & B  
Rally Masters A & B

#### **MASTER SHOWMANSHIP**

A special award will be given to the Grand and Reserve Grand Champion in the Master Showman Class.

**HIGH IN TRIAL OBEDIENCE:**

A special award will be awarded to Obedience High in Trial and Reserve High in Trial. These awards will be taken from the highest score in the following classes:

- Graduate Novice A & B
- Open A & B
- Graduate Open A & B
- Utility A & B

**HIGH IN TRIAL RALLY:**

A special award will be awarded to the High in Trial and Rally Reserve High in Trial. These awards will be taken from the highest score in the following classes:

- Excellent A
- Excellent B
- The Excellent Score from Advanced/Excellent A & B
- Masters A
- Masters B

Any tie scores will be broken using the time as recorded on the score sheet for the class in which that score comes from. Lowest time will break the tie.

**AGILITY AWARDS**

advance with either the State 4-H Camp Tobin Office.



Revised 2020

**VOLUNTEER INFORMATION**

It takes many people to put on a successful State 4-H Dog Show. Each county will be **REQUIRED** to provide volunteers to be ring stewards, help with registration, be a runner, and assist with set-up and clean-up. Please have your volunteers register through the website.

If you volunteer for set up, please note that set up times might vary due to other events scheduled at the Event Center the evening before our show. Check with Anne Janicki, Superintendent for times.

***Passes to enter the fairgrounds on the day you are showing should be provided by your local 4-H Extension Agent in your local Extension Office. No passes will be sent out by the superintendents of these contests.***

Handicapped parking on the fairgrounds during the dog show is not permitted; however, provisions can be made for those who need additional assistance in gaining entrance to the Event Center. Arrangements must be made in



# 2020 Fashion Revue Contest

Kim Sterkel... Asst. Superintendent  
[ksterkel@weldgov.com](mailto:ksterkel@weldgov.com)

**Class 449 Fashion Revue**

## Judging Guide for Fashion Revue

### PREPARATION

- Design and style
- Choice of fabric and color
- Overall appearance of garment
- Accessories
- Grooming

### PRESENTATION

- Appropriate for garment style
- Movement: walking, standing and turns
- Poise/Posture
- Variety of movement, use of space and creativity
- Attitude and enthusiasm

Judges may ask participants questions after modeling.

**Contest date: Saturday, August 22**

**Public Style Show: 6:00 pm at the Sangre De Cristo Art Center**

**Contest location: Sangre de Cristo Arts & Conference Ctr. – Pueblo**

**Participant's Entry Fee: \$45 payable to the county offices with registration materials.**

**County Registration Deadline:**

**August 7** (counties will need to register their participants online by this date).

**Late registrations will be accepted from August 10- through August 14 but must include a late fee of \$10.00 per entrant. Absolutely NO entries or changes will be accepted after 5:00 pm on August 9th.**

For counties with late county contests, please contact the State 4-H Office.

Each county office will issue **one check payable to the Colorado 4-H Foundation** for county entry total.

**Mail by Aug. 10 to:**  
Sharie Harless  
CSU State 4-H Office  
4040 Campus Delivery  
Fort Collins, CO 80523-4040

Participants must upload their photo and narration in FairEntry by **August 7**. See above for counties with late county contests.

1. Contestants—Each county may send only three representatives. Contestants must model a **garment**, not accessories, made in clothing construction, heritage arts, leathercraft or artistic clothing or a purchased garment in the clothing buymanship project. **Each contestant may model only one outfit.** Contestants must be a senior 4-H member and have passed their 14<sup>th</sup> birthday by December 31 of the previous year to participate in the State 4-H Fashion Revue.
2. Judging Time – Contestants will be judged either morning or afternoon. A judging list that tells which session a contestant is in will be emailed to the contestants on the **Monday prior the contest.** Contestants must be present for their judging session, rehearsal and public show. A complete schedule is available at: [http://www.colorado4h.org/events\\_opportunities/state\\_fair/packet/index.php](http://www.colorado4h.org/events_opportunities/state_fair/packet/index.php)
3. Lodging, Meals & Transportation – No lodging, meals, or transportation are included in the contest. Contestants may stay at 4-H Camp Tobin, commercial lodging, private homes or come only for the day.
4. Chaperones/Parents – During the judging, chaperones are free to leave or spend the day as they please. If they choose to stay and watch the judging, they must remain silent. Leaving and entering the theater will only be allowed between judging groups. Only group leaders will be allowed in the dressing rooms. We have established this policy out of courtesy and in fairness to our judges and all participants.
5. Group Leaders – Applications are on the 4-H website at: <http://co4h.colostate.edu/resources/state-fair/packet/FashionGroupLdr.pdf> and due on **August 8** for individuals who may be interested.
6. Three Grand Champion and Reserve Grand Champion ribbons will be awarded to the top models in the Fashion Revue:
  - 1 –Clothing Construction;
  - 1 –Upcycle Your Style, leathercraft, and Heritage Arts;
  - 1---Clothing Buymanship.

The three-state senior grand champion individuals will each receive an educational trip to Western National 4-H Roundup. Winners of the fashion revue contest must meet participation requirements for this event. Senior members who previously received a Western 4-H Roundup trip are not eligible to enter the Fashion Revue contest again.
7. **All garments that have been judged as exhibits can be left at to the Sangre de Cristo Art Center on Saturday evening and will be taken to the fairgrounds. If your garment is not being judged as an exhibit, you may take it home.**

# 2020 COLORADO 4-H DIGITAL PHOTO CONTEST

This contest is a state contest –4-H member does not need to qualify at the county fair to enter. Contest will be opened on May 15th and close on June 15th.

## Classes

### 4-H in Action

101	4-H in Action	Jr.
102	4-H in Action	Int.
103	4-H in Action	Sr.

### Animals/Insect

201	Animals/Insects	Jr.
202	Animals/Insects	Int.
203	Animals /Insects	Sr.

### Architecture

301	Architecture	Jr.
302	Architecture	Int.
303	Architecture	Sr.

### Landscape

401	Landscape	Jr.
402	Landscape	Int.
403	Landscape	Sr.

### People

501	People	Jr.
502	People	Int.
503	People	Sr.

### Plant Life

601	Plant Life	Jr.
602	Plant Life	Int.
603	Plant Life	Sr.

4-H members may submit up to 6 entries. However, each entry must be in a different class.

Photos cannot be dually entered in more than one class.

Photos may be in color or black-and-white

Photo size: Photos submitted must be 8"x 10"

For more information on the contest please go to:

<http://co4h.colostate.edu/resources/state-fair/StateDigitalPhotoContest.pdf>

This contest is open to (and only to) all Colorado 4-H members 8-18.

Participation is NOT limited to those 4-H members enrolled in photography.

4-H members will enter their entries directly in to FairEntry. The photos will be uploaded to a Drobox account.

This contest is strictly a state contest-which means that the 4-H member does not have to qualify at the county level to enter.

All entry photos must have been taken by the 4-H member submitting the entry during the contest year.

# 2020 Robotics Challenge Tournament

Abby Weber.....Superintendent

[Abby.weber@colostate.edu](mailto:Abby.weber@colostate.edu)

Willie Wilkins.....Asst. Superintendent

[Willie.wilkins@colostate.edu](mailto:Willie.wilkins@colostate.edu)

**Contest Date: Saturday, September 5**

**Location: TBA**

**Check-In: --1:30 pm; Contest starts promptly at 2 pm.**

**Participant's Entry Fee: \$10 per member**

**Registration Deadline: August 17**

**Entry deadline will be Monday two weeks prior to State Fair.**

**Online registration completed by August 10 is highly preferable.**

Each county office will issue **one check payable to Colorado State University/4-H Camp Tobin for county entry total.**

Mail by **Aug. 10** to:

Sharie Harless

CSU State 4-H Office

Campus Delivery 4040

Fort Collins, CO 80523-4040

**No entries at the contest will be accepted.**

Awards will be given after the event.

## Robotic Challenge

The challenge will use the LEGO Mindstorms EV3 platform. County robotics teams with other platforms (Textrix, Vex, FIRST, NXT) are encouraged to participate by exhibiting at the State Fair in their respective unit.

Each year the tournament board will change.

## Requirements:

Each county can bring one (1) junior team and one (1) senior team. **A team is made up of two or more members.**

## Classes:

Class 470

Junior Team (8-13 years old)

Class 471

Senior Team (**at least one member 14-18 years old**)

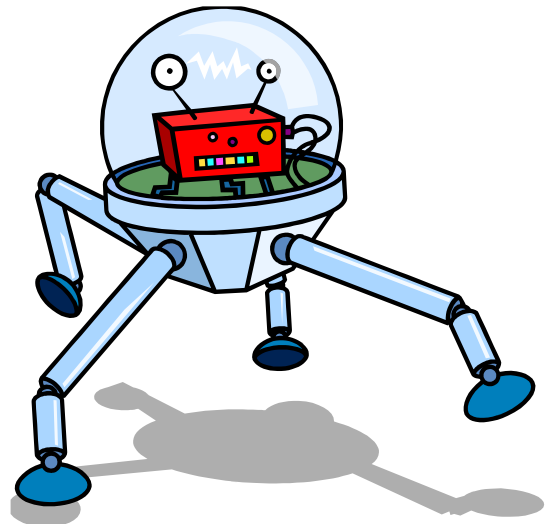
Remember that if your team is made up of a mixture—juniors and seniors, they must compete at the senior level.

Information regarding the current year's challenge, including challenge specifications, scoresheets, and logistics will be available in early January 2020 online at:

<http://www.4hstemk12.colostate.edu/state-robotics-contest/>

Teams are encouraged to contact the superintendent with any clarifying questions about the challenge as they arise. The challenge website will be updated throughout the spring and summer with any updates, along with answers to team questions. Be sure to re-check the website as the challenge approaches to have the most up-to-date information.

**THANK YOU VESTA'S** for sponsoring this contest and providing judges.



# 2020 4-H Engineering Design Challenge Contest

Kaycee Manuppella.....Superintendent  
[kaycee.manuppella@colostate.edu](mailto:kaycee.manuppella@colostate.edu)

**Contest Date: Saturday, September 5**

**Location: TBA**

**Check-In: Noon; Contest starts promptly at 2 pm.**

4-H members will need to bring their machine through a designated gate. 4-H members will be informed of the gate prior to the contest. Machines will not be allowed to be built on tractors, lawn mowers, golf carts or other self-propelling vehicles.

4-H members are responsible for the transportation of their machine to and from the building. You may want to make your machine easy to break down into transportable segments that can be loaded onto dollies or wagons that can be walked to and inside the building.

**Participant's Entry Fee: \$10 per member**

**Registration Deadline: August 17, 2020  
Entry deadline will be Monday two weeks prior to State Fair.  
Online registration completed by August 10 is highly preferable.**

Each county office will issue **one check payable to Colorado State University/4-H Camp Tobin for county entry total.**

**Mail by Aug. 10 to:**  
Sharie Harless  
CSU State 4-H Office  
Campus Delivery 4040  
Fort Collins, CO 80523-4040

**No entries at the contest will be accepted.**

Awards will be given after the event.

## Engineering Design Challenge

The goal of the 4-H Engineering Design Challenge is to encourage critical thinking, creativity, innovation, and problem solving in a non-traditional learning event and to have FUN in the process. In Rube Goldberg fashion, participants will apply their STEM knowledge and skills to solve problems by identifying and researching them, then making and implementing a plan to design a solution.

A Rube Goldberg machine is an overly complex contraption that does a simple task. The best ones use everyday items in a whimsical way. They interact as a series of chain-reaction steps that culminate in accomplishing the task. In the 4-H Engineering Design Challenge – Level 1 and Level 2, youth not only employ physics and engineering, but humor and storytelling, to create their machine.

Teams are encouraged to create a theme for their machine and incorporate it into a story. Teams that build a machine and complete the supplemental recordkeeping documents (journal or record of their work and a poster or other summary description of the work) can demonstrate their machine at the Colorado State Fair. (Promotion to the State Fair Contest will be at the discretion of County 4-H Agents.)

## 2020 Contest - Planting Seeds and Growing Leaders

Your challenge for 2020 is to design and build a machine that plants a seed and waters it.

### Guidelines

- The seed must be visible by an observer from 5 feet away.
- It must be planted and watered in such a way, using acceptable gardening practices, that the seed is likely to grow.
- The seed, the planting medium, and the water must be separated prior to beginning.
- There is no specification for the amount or type of planting medium, nor the amount of water, as long as all other machine specifications are met.

*Please view complete contest documents and machine specifications and scoresheets within the Level 1 and Level 2 handbooks found online.*  
<http://www.4hstemk12.colostate.edu/engineering-design-challenge/>

### Requirements:

Each county can bring one (1) Level 1 junior team, one (1) Level 1 senior team, and one (1) Level 2 senior team. A team is made up of two to five members.

### Classes:

Class 480 Level 1 - Junior Team (8-13 years old)

Class 481 Level 1 - Senior Team (at least one member 14-18 years old)

Class 482 Level 2 - Senior Team (at least one member 14-18 years old)

Remember that if your team is made up of a mixture (juniors and seniors), they must compete at the senior level.

Teams are encouraged to contact the superintendent with any clarifying questions about the challenge as they arise. The challenge website will be updated throughout the spring and summer with any changes.

# 2020 4-H Rocket Fly Day Contest

Tom Kindvall . . . . . Superintendent

.....Assistant Superintendent

**Contest date: Sunday, August 29**

**Time:** Registration/Check-in 6:30am  
Launch begins at 7:00am sharp!

**Location:** Colorado State Fairgrounds Grandstand  
(Located near Gate 1, but entry is only through Gate 10)

**Participant's Entry Fee: \$10 per participant.**

**Registration Deadline: August 17**

**Entry deadline will be Monday two weeks prior to State Fair.**

**Online registration completed by August 10 is highly preferable.**

If a county did not have its own fly day due to fire bans, you may still enter one member from each unit if they register by the due date.

If your county fair is not completed prior to August 3, call Connie Cecil to make arrangements.

Each county office will issue **one check payable to Colorado State University/4-H Camp Tobin for county entry total.**

Mail by **Aug. 10** to:  
Sharie Harless  
CSU State 4-H Office  
Campus Delivery 4040  
Fort Collins, CO 80523-4040

**No entries at the contest will be accepted.**

Awards will be given after the event.

**Criteria--Contest will include the following:**

Written exam  
Parts Identification  
Rocket Launching and Safety

Following is a description of the events for the state rocket fly day contest. County organizers may design their contest differently to meet their specific goals. To insure the greatest success of the county's representative at the state contest, it is suggested that these rules be followed within reason.

## **Written Examination**

The purpose of the written examination is to determine the contestant understands of model rocketry design, construction and operation. The questions will be based on the information found in the Colorado 4-H model rocketry literature.

The question formats will be true/false and multiple choice.

For the senior division, the source material will include knowledge and skills associated with rockets up to and including level 6. For the junior division, knowledge and skill levels will include levels one through three model rockets. The senior division will require a greater depth of knowledge for success.

## **Parts Identification and Function**

Contestants will demonstrate their knowledge of 1) model rocket parts and related equipment and 2) their function (senior division only). Before model rockets can be constructed and launched successfully by youth, they must know and understand the function of the rocket parts. Ten to 20 model rocket parts will be provided for identification and description of its function. Each participant will complete the Parts ID component individually.

## **Rocket Fly Day Contest Rules:**

1. Exhibitors must fly a rocket pertaining to the skill level in which they are enrolled in.
2. Rockets in units 1-4 **must** be checked in with color panel (picture) from kit which indicates engine size, or catalog with proof of skill level and recommended first flight engine. Unit 6 must state the size of the first flight engine at check-in.
3. Level 4 rocketeers may use level IV or V rockets.
4. Rockets **must** be launched with **FIRST FLIGHT ENGINES ONLY.**
5. Rocketry members are asked to bring their own rocket. Each contestant will be required to launch their rocket twice (time and weather permitting).
6. Launching equipment will be set up. Members are to supply rocket, engines,

igniters, parachutes and wading. A field box is advisable.

7. Event will be judged on construction, flight stability, range safety, chute deployment and landing. Rockets **must** be painted.
8. Rockets entered in State Fair Exhibit judging may not be used for Rocket Fly Day competition.

**Counties may enter one exhibitor per unit as follows:**

**UNIT 1**

Class 669 UNIT 1 – Level 1 Juniors  
Rocket with Balsa Wood Fins

Class 670 UNIT 1 – Level 1 Seniors  
Rocket with Balsa Wood Fins

**UNIT 2**

Class 671 UNIT 2 – Level 2 Juniors  
Rocket with Balsa Wood Fins

Class 672 UNIT 2 – Level 2 Seniors  
Rocket with Balsa Wood Fins

(A member may exhibit in this unit more than one year.)

For Units 3-6 —finished fins of any type.

**UNIT 3**

Class 673 UNIT 3 – Level 3 Juniors

Class 674 UNIT 3 – Level 3 Seniors

**UNIT 4**

Class 675 UNIT 4 – Level 4 Juniors

Class 676 UNIT 4 – Level 4 Seniors

**UNIT 6**

Class 677 UNIT 6 – Level 6 Juniors

Class 678 UNIT 6 – Level 6 Seniors

This is a judged event. Please review the score sheet and the Colorado State Fair 4-H Exhibit Requirements, available at:

<http://co4h.colostate.edu/statefair/score-sheets/RocketFlyDayScoreSheet.pdf> and

<http://co4h.colostate.edu/resources/state-fair/StateFairExhibitReq.pdf> respectively.

**Awards given:**

A Champion and Reserve Champion will be awarded in each unit.

Overall Grand and Reserve Grand Champions will be awarded to the highest point exhibitor—Units 1-6 Jr. and Units 1-6 Sr.

Highest score overall individual in each age division will receive a trophy (sponsored by Phil and Pat Rouse, Weld County).



# CAT SHOW – 2020

Marlena Griesse..... General Superintendent

**Saturday, September 5 Showmanship  
Conformation  
Cage Decorating**

Check-in: 8:30 am to 9:30 am  
Cat Show starts at 10:00 pm on Saturday, Sept. 5.

**Participant's Entry Fee: \$15 per 4-H member**

**Registration Deadline: August 17**  
**Entry deadline will be Monday two weeks prior to State Fair.**  
Online registration completed by August 10 is highly preferable.

Each county office will issue **one check payable to Colorado State University/4-H Camp Tobin for county entry total.**

Mail by **August 10** to:  
Sharie Harless  
CSU State 4-H Office  
4040 Campus Delivery  
Fort Collins, CO 80523-4040

All 4-H Cat ID Forms (including health certificates) are to be on 4HOnline by May 1st. The county will complete the online portion of the registration process on behalf of its participants.

Passes to enter the fairgrounds on the day you are showing and the day you set up your cage should be provided by your local 4-H Extension Agent in your local Extension Office. No passes will be sent out by the superintendents of these contests.

**The State Fair Cat Show is a 4-H show.  
As such, 4-H youth development  
principles are of primary importance.**

## **GENERAL CONTEST RULES:**

13. The Cat Show will be held Saturday, September 5, 2018. They will be held at the Colorado State Fair Small Animal Building. Check-in for cats will be from 9:00 AM to 10:00 AM on Saturday, September 5, and the show will begin at 1:00 PM.
14. Dates of approved current and effective vaccination of the cat for rabies and FVRCP (feline viral rhinotracheitis, calicivirus and panleukopenia/distemper) must be provided on

the State 4-H Cat ID Form. It is highly recommended that you have your cat(s) tested and vaccinated for Feline Leukemia and Feline Immunodeficiency Virus. While this is not mandatory, it is recommended for the health of your cat. If you have a cat that has tested positive for FELV and/or FIN, please alert the show superintendent so that appropriate precautions can be taken. 4-H members vaccinating their own cats must provide proof by including a statement from their vet or by including the vaccination labels. A rabies vaccination is federally mandated to be given by a veterinarian ONLY. This vaccination must be current and include a veterinarian's signature.

Each entrant is required to complete the **State 4-H Cat Identification on 4HOnline** and have it on file in their Extension Office by **May1<sup>st</sup>**. This form will be used at the State Fair Cat Show so make sure that all 4-H Cat members have completed this Cat ID.

15. Proof of Rabies vaccination must come from a licensed veterinarian or the cat is not legally considered vaccinated. If the member's cat receives rabies immunizations which are given by anyone who is not a Colorado State licensed veterinarian, these immunizations will not be recognized by law should the cat bite someone.
16. State Fair 4-H Cat Show officials and/or staff can and will dismiss any entrant or his/her family from the show for any mistreatment of cats entered in this show. If a question should arise as to what constitutes "mistreatment," State 4-H staff and/or officials will meet to decide appropriate action in each case.
17. Any negative behavior on the part of the exhibitor, family members or leaders directed toward any official will result in disqualification and awards forfeited. If there is a question as to the rules or the judging of a class, adult family members or leaders must approach the Superintendent of that division and **not the judge**. The Superintendents will then take the question to the judge if warranted.
18. Protests must be submitted in writing and presented to the superintendent(s) within 24 hours after judging is announced. Protests will be handled first by the superintendent(s) and then reviewed by State 4-H Office personnel. A fee of \$50 must accompany any protest. If the protest is upheld, the fee will be returned. If the protest is not upheld, the fee will be kept and deposited into the State Cat Project Fund.



19. Show management will have final decision authority. If needed, show management may request assistance with arbitration from a committee comprised of the show superintendents, the judge (if willing), and the leader and/or agent from county involved (if present).

**20. Colorado State 4-H Dress Code**

This dress code is to be followed by all Junior, Intermediate, and Senior 4-H members, as well as adult leaders, advisors, and chaperones at all Colorado State 4-H sponsored events including but not limited to the Colorado State Fair 4-H Cat Show. Deviations from the dress code will result in a request to change. This dress code is not subject to personal interpretation.

Exhibitors should wear clean, simple, neat clothing. Dress shirts (with collars) or blouses are preferable. Exhibitors must wear pants and closed-toed shoes for protection.

21. The general age groups for Cat Project are:

Junior 8-10 years

Intermediate 11-13 years

Senior 14-18 years

Age is determined by the member's age as of December 31, 2017

22. All cats must be brought to the show in a travel carrier, and the carrier must stay near the showing area all the times. The carrier should have a towel or blanket in the bottom for traction for the cat.

23. A display cage will be provided at the show for each cat.

24. Exhibitors are to provide their animals with a litter box, litter, food, and water. Additionally, they must provide a bottom liner such as a blanket or a rug to provide traction for the cat. Exhibitors should also have a blanket or some sort of cloth to cover the exterior of the cage when necessary. The cage should be clean and orderly always. Members are invited to decorate their cages as well, and awards will be given for decorations. (See details below).

25. All cats must be on a halter and leash when outside of the cage. The simple, thin, nylon harnesses tend to work best.

26. No cats are allowed beyond the immediate vicinity of the Small Animal Building.

27. Each 4-H exhibitor is responsible for preparing and showing their own cat(s). Each exhibitor must bring their own cat to the judging table. Only

4-H members may show cats at the judging table. All exhibitors are expected to stay in the area with their cats during judging. If a 4-H cat is not on the judging table at the time the class is judged, it will not be judged. Communicate any potential schedule conflicts with other 4-H activities with the superintendent in advance of the show.

28. A cat that becomes difficult to handle may be judged in the cage at the judge's discretion, with A LOSS OF 5 POINTS in showmanship.

29. Overall placing scores, prizes, and score sheets will be given out at the day's closing ceremony.

**EXHIBITOR ELIGIBILITY RULES:**

G. Member must be enrolled in the 4-H Cat Project.

H. The member must own his/her project cat individually or in partnership with immediate family members or guardians during the complete duration of the project year. No leased cats will be allowed to show at State Fair. If requested the member must have proof of ownership of the cat at the time of entry and provide that to the superintendents. The member must provide majority of care for the cat(s).

I. Any member exhibiting his/her cat at the State Fair 4-H Cat Show must be an official representative of his/her county.

J. An acceptable record book must be done and meet all guidelines required by their county for State Fair qualification.

**CAT ELIGIBILITY RULES:**

1. Cats may be purebred or household pets. Cats do not need to be registered or pedigreed to enter the 4-H Cat Show.

2. It is recommended that all 4-H cats, other than pedigreed breeding animals, be neutered or spayed.

3. No obviously pregnant or lactating queens will be allowed to compete in any classes at the State Fair.

4. No kittens under four months old will be allowed to show.

5. Each cat exhibited will be examined at check in. Cats must be clean and in good health (clear eyes and nose, etc.) and free from injury or pain. Cats must be free of fleas, ticks, ear mites, worms, other parasites, and diseases. Any cat not meeting these health requirements will not be judged and will be asked to leave the show

immediately. The superintendent reserves the right to not allow cats to show that are believed to be a health threat to other animals.

6. All cats must have their front and rear claws clipped for the safety of the 4-Her and judge.

#### **SHOWMANSHIP:**

Showmanship is mandatory. All 4-H cat show exhibitors are required to show **ONE** cat in showmanship. Exhibitors must prepare and show their own cats. Exhibitors will be judged on their handling of the cat from its cage to the judge's table. They will also be expected to answer to questions as to breed, age, type and date of immunizations, sex, and general knowledge of the cat. Resources include the following 4-H manuals: Juniors – *Purr-fect Pals*; Intermediates – *Purr-fect Pals* and *Climbing Up*; Seniors – *Purr-fect Pals*, *Climbing Up*, and *Leaping Forward*.

#### **CLASS 101 Junior Showmanship**

This class is for members who are 8-10 years old as of December 31 of the previous year.

#### **CLASS 102 Intermediate Showmanship**

This class is for members who are 11-13 years old as of December 31 of the previous year.

#### **CLASS 103 Senior Showmanship**

This class is for members who are 14-18 years old as of December 31 of the previous year.

Showmanship Score Sheets can be found at:

#### **CONFORMATION:**

Cats are judged on physical condition, cleanliness, temperament, and presentation, not on specific breed standards (except in the purebred class).

Each youth may show an unlimited number of cats; however, each cat can only be shown in one class. (For example, a cat shown in the purebred class cannot also be shown in the DSH class). Classes are as follows, but may be further divided at the superintendent's discretion:

#### **CLASS 104 Purebred Conformation**

This class is for purebred cats over eight months of age but younger than eight years.

#### **CLASS 105 Domestic Short Hair Conformation**

This class is for cats of unknown breed over eight months of age but younger than eight years who are short haired (DSH).

#### **CLASS 106 Domestic Long Hair Conformation**

This class is for cats of unknown breed over eight months of age but younger than eight years who are long haired (DLH).

Conformation Score Sheets can be found at:

#### **CAGE DECORATING:**

Members are encouraged to decorate their cat's cage. Cages will be judged by the following classes:

#### **CLASS 109 Junior Cage Decorating**

This class is for members who are 8-10 years old as of December 31 of the previous year.

#### **CLASS 110 Intermediate Cage Decorating**

This class is for members who are 11-13 years old as of December 31 of the previous year.

#### **CLASS 111 Senior Cage Decorating**

This class is for members who are 14-18 years old as of December 31 of the previous year.

## **SECTION 9 SPECIAL AWARDS**

(all awards contingent on sponsorship)

### **Creative Cooks**

Grand Champion Senior exhibitor(s) will win the opportunity to be a Colorado Delegate to the Western National 4-H Roundup. Depending on the availability of funds, partial support may be available from the Colorado 4-H Foundation.

### **Demonstrations**

The top 2 members of a Colorado State Fair Championship Senior Team and the top Senior Individual Champion will each receive a partially funded trip to Western 4-H Roundup, if eligible and sponsors secured. (If the Champion Senior Team consists of mixed-age group members, only the Senior-age member will be eligible for the Roundup trip). A senior demonstration covering a topic related to consumer science and finishes in the top 10 will win a partially funded trip to compete at the FSC Classic Demonstrations at Western National 4-H Roundup (Up to two demonstrations –may either be individual or team).

### **Fashion Revue — Special Awards**

The State Fashion Revue Grand Champion Clothing Construction and Grand Champion Artistic Clothing and Grand Champion Buymanship Models will receive a partially funded trip to Western National 4-H Roundup in Denver to participate in the FCS Classic Fashion Revue Contest.

Participants in Heritage Arts, Leathercraft or Upcycle Your Style, Clothing Construction or Buymanship will compete for this trip.

### **Dog Contest –Special Award**

The State Fair Senior Showmanship Grand Champion will receive a partially funded trip to Western National 4-H Roundup in Denver, if eligible and sponsors secured.

The Colorado 4-H Foundation has traditionally funded several awards for outstanding 4-Hers. Among those funded are trips to Western 4-H Roundup and trips to National 4-H Conference, National 4-H Congress and Citizenship Washington Focus. In March the Colorado 4-H Foundation director receives requests for funding. All requests are taken under consideration and are selected by the board for funding. Supporting Colorado 4-Hers across the state is a commitment of the Colorado 4-H Foundation. The board tries to allocate the money raised in a way that benefits the most Colorado 4-Hers, as well as recognizing outstanding 4-H youth. For a complete financial report of the Colorado 4-H Foundation or for questions contact the Executive Director, Colorado 4-H Foundation, Campus Delivery 4040, Fort Collins, CO 80523.

