



Step by Step How To

Cloverbuds: Ages 5-7

4-H: Ages 8-18



FREMONT COUNTY
COLORADO STATE UNIVERSITY
EXTENSION

6655 State Hwy 115

Florence, Co, 81226

Office Hours: Monday-Thursday 7:00-5:00

719-276-7390

Visit v2.4honline.com to enroll or stop by the Extension Office. The enrollment fee in Fremont County is \$35.00, payable to the Extension Office. When you enroll, you will also want to purchase project books. Additional fees may apply as determined by project.

4-H To-Do List



- Pick a Club
- Pick your projects
- Get enrolled, pay fees, and order project books
- Attend Club Meetings (min. 50%)
- Work on Projects
- Give a Demonstration for each project
- Download and complete a project specific record book- Minimum of a 70% score
- Read the Newsletter every month
- Do the community service
- Complete Fair Entry Form to enter fair
- Show your project
- Turn in your record book
- Evaluate your Experience
- Attend Achievement Awards Program

Anyone at the office is happy to help answer any questions you have. We also provided our new family support staff's contact info below!



FREMONT COUNTY
COLORADO STATE UNIVERSITY
EXTENSION

Kassy Barry-Tracy
4-H Program Coordinator
New Family Support
719-276-7390

kassundra.tracy@fremontco.com



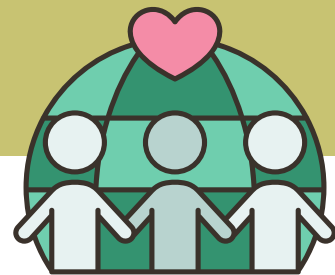
Step 1: Find a Club!



There are clubs all over Fremont County – search through the list and pick one that fits your schedule or has friends you know! Your club leader will be your most important point of contact aside from your extension agent



Clubs meet monthly and consist of a 5–7 member leadership team and additional members. Members can participate in meetings by voting and speaking up, or even run for an office! You have to attend 50% of your club meetings from the time of enrollment to complete a project!



Complete Community Service with your Club! Various community service opportunities will be available throughout the year—most commonly through your club. Community service allows us to improve and give back to those around us.

2024-2025 Club List with Leader Contact Information as of 9/9/24

If you are interested in a club whose deadline has passed, please contact the office. Contact your leader after joining so they can get your contact information. See website for updated list at fremont.extension.colostate.edu
Recommended Enrollment Dec. 16th, 2024. Re-Enrollment Deadline Feb. 3rd, 2024. Late fee \$30 per member.
New families can enroll at any time with no late fee.

Pathfinder Park Event Center and Extension Office: 6655 State Hwy 115, Florence
4-H Building Address: 1595 S 9th St., Canon City

Club	Leader	Leader	Leader	Meeting Information	Location
Barbwire-N-Roses Deadline January 10, 2025 Limit 15 new members	Charla Wellborn chachawellborn@yahoo.com 719-947-5345	Laura Bufmack prenrosebufmacks@juno.com		2 nd Sun., 1:00 PM, Penrose Park & Rec Community Building 401 Park Place. Penrose from January to June	Penrose Area
Beaver Park AG	Amanda Ellis ellisja02@aol.com 719-429-5715	Kristina Brubaker ktbrubaker@aol.com 719-371-1839		1st Thurs., 6:30 PM, Penrose Park & Rec. Community Bldg. 401 Park Place, Penrose from October to June	Penrose Area
Boots-N-Spurs Deadline January 1 st , 2025 Limit 20 Members 2 Leaders	Jolee Pearsall jpearsall711@gmail.com 719-252-3597	Amanda Fouche amandawalker21@hotmail.com 719-371-5031		2nd Sun., 1pm-3pm, Pathfinder Pavilion Classroom 6655 State Hwy 115 Florence from October to July (No May Meeting)	Florence Area
Buckles and Bows	Cortney Richardson 719-371-2399 Ctrichardson1229@gmail.com			2 nd Friday at the 4-H Building in Canon City at 6 PM January- July	Canon City Area
Clover Rovers Deadline January 30 th , 2025	Nessa Dalby nessamarie2000@icloud.com 719-221-0227			2nd Sun., 3:00 PM, Penrose Park & Rec. Community Bldg. 401 Park Place, Penrose from October to June (May meeting date will change due to Mother's Day)	Penrose Area
Creative Kids Limit 20 Members Closed	Jennifer Stewart hyla13@bresnan.net 719-649-5460	Krystina DeDuca Krystina.delduca@fremontco.com 719-371-1795		2 nd Thurs., 6 :00 PM, 4-H Bldg. from November to July.	Canon City Area
Four Mile	Delores Comstock ddcomstock@bresnan.net 719-275-6722 719-431-0825			4 th Thurs., 6:30 PM, 4-H Bldg. from January to July (March meeting date may change due to Spring Break)	Canon City Area
Go For Broke	Nicki Hobby goforbroke4hclub@gmail.com 719-429-1090	Lisa West westl2010@hotmail.com 719-568-5155		3rd Tues., 7:00 PM, Penrose Library at 35 7th Ave., Penrose from January to July (If a meeting is changed everyone is notified by email)	Penrose Area
Los Caballeros Deadline December 31 st , 2024 Limit 20 Members Closed	Lynn Adamic adamic.lynn28@gmail.com 719-429-0055	Russ Adamic Russ.adamic@yahoo.com 719-371-6472	Brittany Carr Clintbrittanycarr@gmail.com 719-371-6080	1st Monday., 7:00 PM., November to July at Pathfinder Park Pavilion Classroom.6655 State Highway 115 Florence. Dec. meeting varies.	Canon/ Florence Area
Rocky Mountain	Jolene DeVries jdevriesris@gmail.com 719-942-4070			3rd Sun., 3:30 PM, Cotopaxi School Cafeteria from October to July. If meeting falls on a holiday, it will move to a different day by agreement.	Cotopaxi Area
Tally Ho January 30 th , 2025 Limit 30 Members	Renee Watters renee.watters@Ccsre1.org 719-269-8288	Abbie Patton miteteacher@hotmail.com 970-596-0353		2nd Tues., 6:30 PM, 4-H Bldg. October to July. First Meeting November 14th	Canon City Area
Wetmore Wizards	Tami Ratkovich wetmore4h@yahoo.com 719-429-6071			1st Mon., 6:30 PM, Wetmore Community Center from October to July. Dates may vary due to conflicts.	Wetmore Area
Fremont Cloverbuds For members ages 5-7 Member Limit 25 Closed	Sydney Swart sydneymswart123@outlook.com 719-429-6850			2 nd Saturday 1-3 pm 4-H Building January-June	Canon City Area



Step 2: Pick Your Project!



4-H has so many projects to offer! Find something that interests you or give something new a shot!



2024-2025 Project List Revised 9/10/2024

**Encouraged Enrollment
Dec. 16th, 2024**

Re-Enrollment Deadline Feb. 1st, 2025. Late Fee \$30 per member.

New members can enroll at any time without a late fee.

**Add Project Deadline May 1st
Drop Project Deadline June 2nd**

Enrollment Fee **\$35.00**
Horse Project Ins. Fee **\$1.00**
Cloverbuds Fee **\$5.00**
Shooting Sports Project Fee **\$10.00**, plus **\$5** for each additional discipline

Note: Families may purchase project manuals through the office or on your own. There may be additional project fees such as supplies, club dues, etc.

Each project is different. Some projects are more self driven than others and may be completed independently at home. Many of our project have support form leaders who hold meetings.

We have a lot of amazing volunteers, but unfortunately, we do not have leaders for every project offered.

Project meetings may happen once a year, a few times a year, once a month, twice a month, or weekly. This varies by volunteer availability, project content, and other factors. If you need assistance figuring out your projects, we encourage you to call the office.

Ages Divisions

Junior (Jr) Ages 8-10
Intermediate (Int) Ages 11-13
Senior (Sr) Ages 14 and up

All 4-H ages are based on your age as of 12/31/23.

All projects may be taken by Jr., Int., and Sr., members unless otherwise indicated as age specific according to your age on. Look for Jr., Int., or Sr. after the project title.

**** Indicates that there are new manuals for the projects. Please order new manuals.**

For more information you can call the Fremont County Extension Office at 719-276-7390. Office hours are Monday through Thursday 7:00 a.m. to 5:00 p.m. The office is closed on all county holidays and Fridays. The Extension Office is located at the Pathfinder Park Event Center at 6655 State Hwy 115 Florence, CO. The 4-H Building is located at 1595 S 9th St Canon City, CO.

Cloverbuds (5-7 Year Olds)

Cloverbuds is the ONLY project that children ages 5, 6 and 7 may choose to take and their age is as of Dec. 31, 2023. Parents and children together to work on early childhood development. The Cloverbud program in non-competitive. See informational flyer.

Animal Projects

Breeding Beef
Market Beef
(Has project leaders, must be enrolled by Feb. 1st for weigh day Feb. 3rd.)
Dairy Cow

Breeding Goat (includes dairy & pygmy, angora, cashmere, etc.)
Market Goat (Weigh Day May 11th)
Utility Goat (has project leader)

Breeding Sheep
Market Sheep (Weigh Day May 11th)

Market Swine (ID forms due April 1st)

Horse (has project leaders)
Horse (ID forms Due May 1st)
Note: there is a \$1.00 insurance fee to be paid at time of enrollment.

Poultry (has project leaders)
Show Bird
Breeding Chicken
Market Chicken
Duck
Geese
Breeding Turkey
Market Turkey
Game Birds

Rabbit (has project leaders)
Breeding Rabbit
Market Rabbit

Horseless Horse
Making Horse Sense, Unit 1
Health & Horsemanship, Unit 2
Breaking Ground, Unit 3
Brushing Up on Horses, Unit 4

Pet Animal Projects

Cat

Purr-fect Pals, Unit 1
Climbing Up, Unit 2
Leaping Forward, Unit 3

Dog (has project leaders)
Must use Dog record book.

****Pocket Pets** – Must list what animal you are doing. (County Project not eligible for State Fair. This is for the non-breeding project. Must use the Companion Record Book)

General Projects

Cake Decorating (has project leaders)

Edible Decorations, Unit 1
Single Layer Decorating with Tips, Unit 2
Double Layer Decorating with Tips, Unit 3
Character Cakes, Unit 4
Small Treats, Unit 5
Cut-Up Cakes, Unit 6
Flat Surface/Nail Flowers, Unit 7 (Int./Sr. only)
Fondant, Unit 8 (Int./Sr. only)
Lily Flower/Nail Flowers, Unit 9 (Int./Sr. only)
Tiered Cakes, Unit 10 (Sr. only)
Molds, Unit 11 (Sr. only)
Advanced Cake Decorating, Unit 12 (Sr. only)

Ceramics

Glazes, Unit 1
Underglazes, Unit 2
Overglazes, Unit 3
Unfired Finishes, Unit 4
Porcelain Dolls, Unit 5
Hand Construction with Stoneware, Unit 6

Clothing, Artistic

Upcycle Your Style
Creative Sewing, Unit 5
Create Your Own, Unit 7, (Int./Sr. Only)
Buymanship (Int./Sr. Only) Project information is online member. Must download from website.

Clothing Construction

Clothing STEAM, Unit 1
Clothing STEAM, Unit 2
Clothing STEAM, Unit 3 (Int./Sr. Only)
Sewing for Others, Unit 7
Recycled Clothing, Unit 8

Computer Science

Programming through Scratch Level 1 (Beg. Programming)
Programming through Scratch Level 2 (Int. Programming)
Programming through Scratch Level 3 (Adv. Programming)
Computer Science and Coding (Int./Sr.)

Discover 4-H/Welcome to 4-H

(has project leaders) Project not eligible for State Fair.

Electricity

Magic of Electricity, Unit 1
Investigating Electricity, Unit 2
Wired for Power, Unit 3
Entering Electronics, Unit 4 (Sr. Only)

Embryology

Entomology (has project leader)

Teaming with Insects, Unit 1
Teaming with Insects, Unit 2
Teaming with Insects, Unit 3

Beekeeping (has project leader)

Beekeeping, Unit 1
Beekeeping, Unit 2
Beekeeping, Unit 3
Adv. Beekeeping, Unit 4 (Int./Sr. Only)

Filmmaking

4-H Filmmaking

Food and Nutrition (has project leader)

Cooking 101
Cooking 201
Cooking 301
Cooking 401
Outdoor Cooking, Unit 25
Cultural/Ethnic Foods, Unit 30,
(Int./Sr. Only)
Foreign Cookery, Unit 35, (Int./Sr. Only)

Food Preservation

Drying, Unit 40
Freezing, Unit 41
Boiling Water Bath, Unit 42
Pressure Canning, Unit 43 (Int./Sr. only)

Gardening (has project leader)

See Them Sprout, Unit 1
Let's Get Growing, Unit 2
Take Your Pick, Unit 3
Growing Profits, Unit 4 (Sr. Only)

Global Citizenship

Study of Another Country
Hosting A Delegate from Another Country

Heritage Arts

Crochet
Knitting
Needle Arts
Beginning Quilter, Unit 1
Quilting the Best Better, Unit 2-6
Misc. Fiber (Rug Making, Spinning, Weaving, Ethnic Arts & Macramé)
Misc. Non-Fiber (Beading, Silver Smithing, Paper Scrolling, etc.)

Home Design and Decor

Learn about color, texture, line & design, Unit 1
Safety Inside and Out, Unit 2
Emergency Planning and Redecorating, Unit 3
Careers In Interior Design and Decorating, Unit 4

Leadership (to be done one year and then move up except last one)

Leadership Skills You Never Outgrow (Jr. Only)
Leadership Road Trip (Int./Sr.)
Put Leadership to Practice (Int./Sr.)
Refining Leadership Skills (Sr.)
Community Service Project (Sr.)

Leathercraft (has leaders)

Intro Leathercraft/Stamping, Unit 1
Beginning Carving, Unit 2
Intermediate Carving, Unit 3
Advanced Leather Carving, Unit 4
Advanced Stamping, Unit 5
Sewing Leather, Unit 6
Braiding and Untooled Leather, Unit 7
Master Leathercraft, Unit 8
Making and Rebuilding Saddles, Unit 9
Leathercraft Leader Guide

Model Rocketry (has project leader)

Introduction (Balsa Fins), Unit 1
Construction & Flight of Model Rockets, Unit 2
Intermediate Rocketry (Balsa Fins), Unit 3
Advanced Rocketry, Unit 4
Designer Rocketry, Unit 6

Outdoor Adventure

Hiking Trails, Unit 1
Camping Adventures, Unit 2
Backpacking Expeditions, Unit 3

Photography (has project leader)

Photography Basics, Unit 1
Photography Basic Cont., Unit 2
Next Level, Unit 3
Mastering Photography, Unit 4
Low Light (Lightening), Unit 5
Advanced Photography, Unit 6 (Int./Sr.)

Public Speaking (has project leader)

(4-H Contest Night exhibits and completes the Project)

Robotics

Units 1-3 No Kits Allowed

Give Robots a Hand, Unit 1
Robots on the Move, Unit 2
Mechatronics, Unit 3

Scrapbooking (has project leader)

One Page Layout, Two Page Layout, Album, *Tag Making (Jr.), and *Card Making (Int./Sr.)
Scrapbooking

Small Engines

Crank It Up, Unit 1
Warm It Up, Unit 2
Tune It Up, Unit 3
Advanced Small Engines, Unit 4 (Self-Determined)

Sportfishing

Take the Bait, Unit 1
Reel in the Fun, Unit 2
Cast into the Future, Unit 3

Shooting Sports (has project leaders) **Note: there is a \$10.00 range fee to be paid at time of enrollment, plus a \$5 per additional discipline fee.**

Air Pistol (Must be a 2nd year shooter to do this discipline)

Air Rifle

Archery

.22 Rifle

.22 Pistol (Must have completed Air Pistol to do this discipline)

Shotgun

Muzzleloading

Outdoor Skills

(You must enroll in each discipline you want to participate in by the enrollment deadline and drop by deadline those not completing.)

Self-Determined

County Project not eligible for State Fair.

Project is a topic of your choosing.

Veterinary Science (has project leader)

From Airedales to Zebras, Unit 1
All Systems Go, Unit 2
On The Cutting Edge, Unit 3

Visual Arts

Portfolio Pathways (painting, printing & graphic design)
Sketchbook Crossroads (drawing, fiber art & sculpting)

Welding/Metalworking

Intro to Welding, Unit 1
Metal Fabrication, Unit 2
Advanced Metal Fabrication, Unit 3
Large Exhibit Fabrication, Unit 4

Wildlife Conservation

The Worth of Wild Roots, Unit 1
Living Wild in an Ecosystem, Unit 2
Managing in a World with You and Me, Unit 3

Woodworking

Measuring Up, Unit 1
Making the Cut, Unit 2
Nailing It Together, Unit 3
Finishing Up, Unit 4



FREMONT COUNTY
COLORADO STATE UNIVERSITY
EXTENSION

Colorado State University Extension is an equal opportunity provider. | Colorado State University does not discriminate on the basis of disability and is committed to providing reasonable accommodations. | CSU's Office of Engagement and Extension ensures meaningful access and equal opportunities to participate to individuals whose first language is not English.

Colorado State University Extension es un proveedor que ofrece igualdad de oportunidades. | Colorado State University no discrimina por motivos de discapacidad y se compromete a proporcionar adaptaciones razonables. | Office of Engagement and Extension de CSU garantiza acceso significativo e igualdad de oportunidades para participar a las personas quienes su primer idioma no es el inglés. Col.41103



Project Meetings



Some of the projects you choose have project leaders and meetings that are available to you and are wonderful resources!

Dog- Wednesdays starting in January 6:30 p.m.-8:00 p.m.

Foods- Fridays starting in January 9:00 a.m.-12:00 p.m.

(1/17, 1/31, 2/14, 2/28, 3/14, 3/21, 4/4, 4/18, 5/2, 5/16, 5/30, 6/13, 6/27)

Small Animals- Starting in January, 2nd Monday of each month 6:00-8:00 p.m.

Cake Decorating 1st & 3rd Monday 5pm-8pm starting in March

Leathercraft- 1st & 3rd Wednesdays of each month

Photography (meeting dates and times TBD)

Market & Dairy Goat (meeting dates and times TBD)

Discovering 4-H- January 30th 5:30-7:00 & May 15th 5:30-7:00

Shooting Sports- Weather permitting start dates!

Air Rifle & Air Pistol- Mondays beginning 4/7/25 6:00 pm.

.22 Pistol Tuesdays beginning 4/8/25 5:30pm

Archery- Tuesdays beginning 4/22/25 5:30pm

Muzzleloading- Tuesdays 4/15/25 beginning 4/15/25 5:30pm

.22 Rifle- Tuesdays beginning 4/8/24 5:30-6:45 & 6:45-8:00

Shotgun- Thursdays beginning 3/20/25 6:00pm



Last day to add projects is May 1st!

Add Deadlines for specific projects include:

Last day to enroll in Beef- January 29th

Last day to enroll in Poultry, Rabbit, Sheep, Goat, and Swine- April 1st

Last day to enroll in Dog, Cat, Horse May 1st

If for any reason you are not planning on completing your project you are able to drop it NO LATER than June 2nd!

Project Manuals

We highly recommend getting your project manuals as soon as possible! These are the guide to your project and are great resources! Our Project Manual Order Form Provides a color-coded key that tells you where you can purchase your manual.

Below is an example of the Project Manual Order Form.

Vendors for ordering manuals
Shop 4-H https://shop4-h.org/
Ohio State University https://extensionpubs.osu.edu/
University of Illinois State 4-H Office (Champaign, IL) 217-333-0910
University of Nebraska -- Lincoln
https://4hcurriculum.unl.edu/index.php/main/index
4-H Website
http://co4h.colostate.edu/program-areas/colorado-4-h-project-information/
Purdue University https://mdc.itap.purdue.edu/



We will be sending out an email with a direct link to the project manuals for the projects that your child(ren) are enrolled in as we process them.

If you have any questions at all please reach out to the Extension Office and we are happy to answer any questions you may have

2022-2023 4-H Project Manual Order Form Revised 2/21/23		Date:	
Name:			
Mailing Address: Office			
City, State, Zip			
Email Address:		Cell:	
Prices are subject to change if supplier raises price or shipping cost.			
	Quantity	Cost	Total
Beef - Market & Breeding (OSU)			
Beef Resource Handbook		\$40.00	
<i>Beekkeeping (printed by the office or download from 4-H website)</i>			
Beekkeeping, Unit 1		\$5.00	
Beekkeeping, Unit 2		\$5.00	
Beekkeeping, Unit 3		\$5.00	
Beekkeeping Helper's Guide		\$0.00	
<i>Cake Decorating (printed by the office or download from 4-H website)</i>			
Cake Decorating, Units 1-3		\$8.00	
Cake Decorating, Units 4-6		\$8.00	
Cake Decorating, Units 7-9		\$5.00	
Cake Decorating, Units 10-12 (Seniors Only)		\$5.00	
Cat (shop4-h.org)			
Purr-fect Pals, Level 1		\$9.00	
Climbing Up, Level 2		\$9.00	
Leaping Forward, Level 3		\$9.00	
Cat Helper's Guide		\$12.00	
<i>Ceramics (printed by the office or download from 4-H website)</i>			
Ceramics Manual		\$8.00	
Clothing Construction STEAM (shop4-h.org)			
STEAM Clothing 1 ("Fundamentals")		\$22.00	
STEAM Clothing 2 ("Simply Sewing")		\$22.00	
STEAM Clothing 3 ("A Stitch Further")		\$22.00	
<i>Clothing Construction (printed by the office or download from 4-H website)</i>			
Sewing for Others, Unit 7		\$1.00	
Recycled Clothing, Unit 8		\$1.00	
Textile Experiments/Fibers & Fab (supplemental)		\$4.00	
Clothing- Artistic (shop4-h.org)			
STEAM Activity Manual ("Beyond the Needle")		\$22.00	
<i>Clothing- Artistic (printed by the office or download from 4-H website)</i>			
Upcycle Your Style (All Units)		\$2.00	
Creative Sewing, Unit 5		\$1.00	
Create Your Own, Unit 7		\$1.00	

Step 3: Read the Monthly

Newsletter!

IMPORTANT!



READ THE MONTHLY NEWSLETTER!

You will automatically receive a newsletter via email every month after you are enrolled. It contains all 4-H events along with dates and times. It is an awesome resource for finding out what is going on in the 4-H Community! Watch your newsletter closely--especially for important due dates for animal i.d.'s, fair entry forms etc.

The newsletter is also posted on our Fremont County Extension Website and on our Facebook page.

If for some reason you are not receiving it please give us a call and we can see what is going on!



Step 4: Work On & Complete Your



Project!

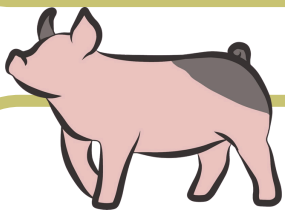
In order to complete your project(s) you must complete the following:

- Attend 50% of your Club Meetings from the time of your enrollment with a minimum of 2 meetings.
- Give a demonstration on each of your projects
- Complete Community Service
- Complete and turn in your record book for each of your projects - Minimum Score of 70%
- Show your project!

Additional Shooting Sports Requirements



- **Must have a Colorado Hunters Education Card**
 - we offer a class in February. If you do not attend this course, you are responsible for taking a separate class and bringing your hunters safety card to the office for our records.
- **Must attend discipline safety training**
- **(first time participating in t discipline and first year shooters)**
- **Must attend a minimum of 4 shooting sports practices on the range with an authorized shooting sports coach prior to County Fair Entry deadlines to shoot at County Shoot.**



Additional Livestock Requirements

- **MQA-Meat Quality Assurance-** You will take this class in the spring
- **Livestock Animal Test -**The office provides study guides for you
- **Must attend weigh-ins/tag-ins (Beef, Goats, Sheep)**

Record Books

Entomology
Record Book



Record books are required for each project that you complete.

To find the record book for your project you will go to

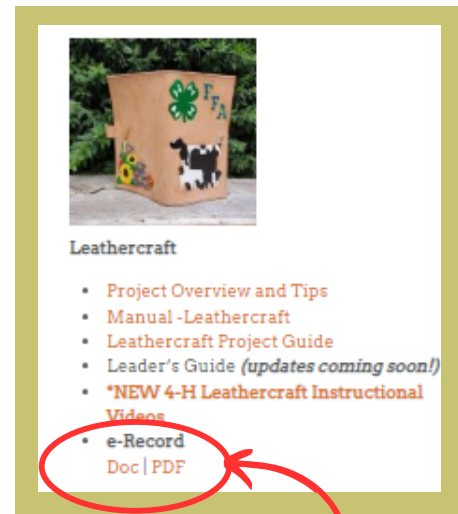
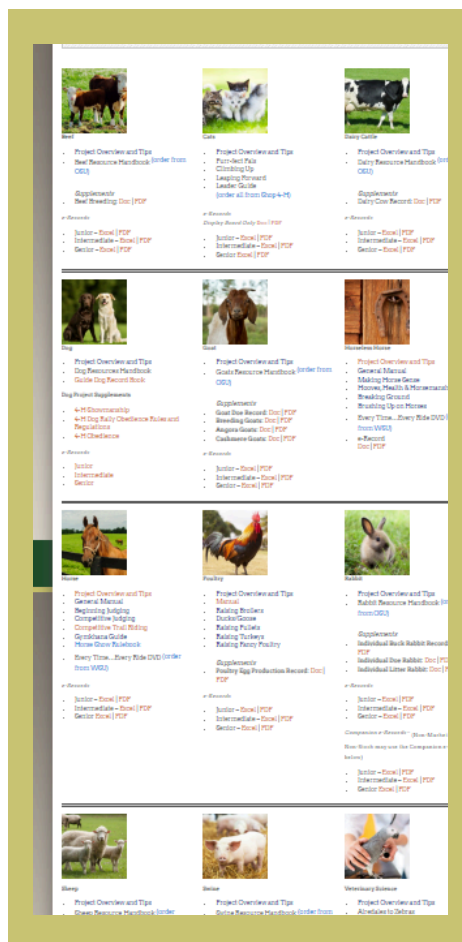
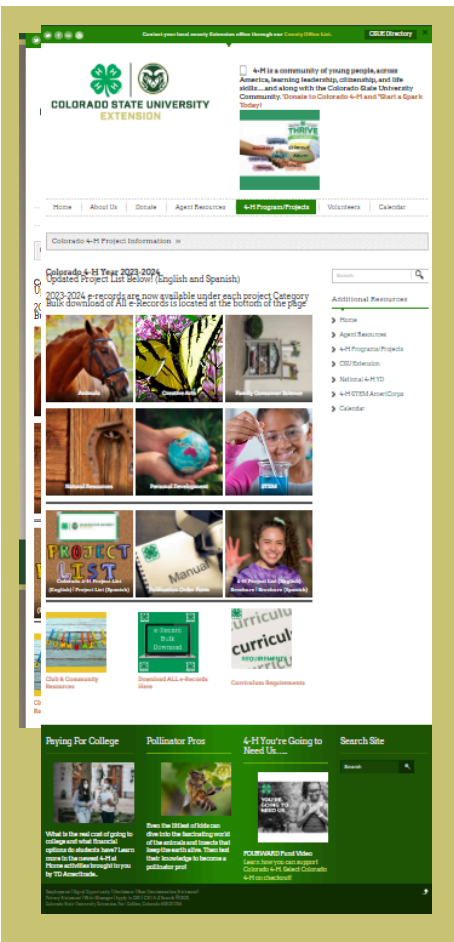
<https://fremont.extension.colostate.edu/>

Here we will walk you through how to find them!

If you hover over the 4-H tab there is a drop down menu at the very bottom of the list it says Record books. Click on that.

You will click on the category of your project and it will take you to a list where you can pick your project. Each project category will look different.

The project that you are in will determine what record book you will complete. Below is an example of Leathercraft



You will click on the version that works best for you and either print or download it so that you can complete your record book.

You have to get a 70% on your record book to complete your project. If after your record book is scored you did not achieve 70% or better you have an opportunity to fix it.

Due Dates!

Shooting Sports- July 22nd by 5:00 p.m.

General Projects- July 27th 3:00-6:00 p.m.

Livestock- August 21st by 5:00 p.m.

If you have questions you can always give the office a call. We are here to help you!

2024-2025 FREMONT COUNTY 4-H CALENDAR (Revised 8/28/25)

Reminder that Fremont County is on a 4-day work week and the CSU Extension Office will be closed on Fridays.

Dates, events, locations are subject to change. We make every effort to provide as accurate a calendar as possible, but dates sometimes have to be changed. Changes will be listed in the monthly 4-H newsletter and on our website:

www.fremont.extension.colostate.edu. Please contact the Extension Office (276-7390) for information regarding calendar items or email csuext@fremontco.com.



OCTOBER

- 1 New 4-H Year Begins! Enrollment Open!
- 2 4-H Council, 7:00 p.m., 4-H Building
- 6-12 National 4-H Week
- 8 Fremont County Fair Board, 6:30 p.m., Pathfinder Park Event Center
- 19 4-H Discovery Day and Open House
- 22 Enrollment Night
- 28 CSU Extension Advisory Committee, 6:00 p.m., 4-H Building
- 28 Fremont County 4-H Cornerstone, 7:00 p.m., 4-H Building
- Nov. 7 Achievement Awards Program

NOVEMBER

- 4 New Family 4-H Family Orientation, 6:00pm, Pathfinder
- 6 4-H Council, 7:00 p.m., Pathfinder Park, Officer Elections
- 7 Achievement Awards Program 5:30pm
- 8-10 Colorado Leadership Camp, (11-13 4-H age), Glenwood Springs
- 10 **Holiday (Veterans Day) Extension Office Closed**
- 12 Fremont County Fair Board, 6:30 p.m., Pathfinder Park Event Center Park
- 15-16 Dare to Be You Camp (TBD 4-H age), State Fair Grounds
- 28 **Holiday (Thanksgiving) Extension Office Closed**

DECEMBER

- 4 4-H Council, 7:00 p.m., Pathfinder Park, officer Installation
- 6 4-H Holiday Craft Fair, 10am -6pm, Pathfinder Park
- 7 4-H Holiday Craft Fair, 8am – 4pm, Pathfinder Park
- 10 Fremont County Fair Board, 6:30 p.m., Pathfinder Park Event Center
- 16 **LAST DAY- Early Enrollment** contest deadline to be enrolled in Fremont County 4-H by 5:00 p.m. to be eligible for early enrollment prize drawing. **We recommend all families enroll by Dec 16th.**
- 25 **Holiday (Christmas) Extension Office Closed**

JANUARY

- 1 **Holiday (New Year's Day observed) Extension Office Closed**
- 8 4-H Council, 7:00 p.m., 4-H Building
- 13 Enrollment Night 5:00 p.m.- 7:00 p.m.
- 14 Fremont County Fair Board, 6:30 p.m., Pathfinder Park Event Center
- 16 4-H Horse Council, 7:00 p.m., 4-H Building
- 20 Livestock Judging Info Meeting 5:30 p.m., Pathfinder Park Event Center
- TBD State Leadership Development Conference (LDC), Denver (ages 14-18)
- 27 CSU Extension Advisory Committee, 6:00 p.m., 4-H Building
- 27 Fremont County 4-H Cornerstone, 7:00 p.m., 4-H Building
- 29 **LAST DAY** to be enrolled in, own and have in your possession-Market Beef Project
- 29 **LAST DAY** to own and have in your possession-Breeding Beef and Dairy Cattle for County Fair

FEBRUARY

- 1 Market Beef Weigh Day, 9:00 a.m.- 10:00 a.m.
- 3 **4-H Re-Enrollment Deadline.** Re-Enrollment Late Fee of \$30 per member after Feb. 3.
- 5 4-H Council, 7:00 p.m., 4-H Building
- 11 Fremont County Fair Board, 6:30 p.m., Pathfinder Park Event Center
- 14 Hunter Education for Shooting Sports (Must attend all 3 sessions) 5:00 p.m.– 9:00 p.m., 4-H Building
- 15 Hunter Education for Shooting Sports (Must attend all 3 sessions) 8:00 a.m. – 12:00 p.m., 4-H Building
- 17 **Holiday (Presidents' Day) Extension Office Closed**
- 20 4-H Horse Council, 7:00 p.m., Pathfinder
- 22 Hunter Education for Shooting Sports (Must attend all 3 session) 8:00 a.m. – 1:00 p.m. 4-H Bldg. & on the range.
- 24 4-H Officer Training for all Club Officers! 5:30pm – 9, Pathfinder Park Event Center

MARCH

- 5 4-H Council, 7:00 p.m., 4-H Building
- 10 Shooting Sports Council, 6:30 p.m. 4-H Building
- 11 Fremont County Fair Board, 6:30 p.m., Pathfinder Park Event Center
- 18 Vet Science Mini Camp, 8-11 yr old, 9 am-11 am, 12+yr 1 p.m.- 3 p.m.
- 19 Cooking Mini Camp, 8-11, 4-H Building
- 20 4-H Horse Council, 7:00 p.m., 4-H Building
- TBD MQA Class, is in person this year. Your family will receive an email if you have anyone who needs to take the MQA as a Jr. or Sr.
- TBD Youth Fest, Ponderosa Camp, TBD
- TBD District Retreat (ages 13 & older), Camp Golden Bell Early March – End of April

APRIL

- 1 Fremont County Swine Identification Forms, Ear Tags and CSF Nomination Cards can be picked up in Extension Office.
- 1 Recommended date to own swine, sheep and goats
- 2 4-H Council, 7:00 p.m., 4-H Building
- 8 Fremont County Fair Board, 6:30 p.m., Pathfinder Park Event Center
- 17 4-H Horse Council, 7:00 p.m., 4-H Building
- 21 **LAST DAY** to own and have in your possession-All Breeding Rabbits, including Doe(s) that you must breed to kindle a litter for Market Rabbit pen for County Fair.
- 28 Fremont County 4-H Cornerstone, 7:00 p.m., 4-H Building

MAY

- 1 **PROJECT ADD DEADLINE. Last day to add a project.**
- 1 LAST DAY to own and have in your possession-Cat, Dog and Horse.
- 1 LAST DAY for CAT, DOG and HORSE certificates to be turned into the Extension Office and through 4HOnline no later than 11:59pm.
- 5 Market Tests Study Guides Available
- 7 4-H Council, 7:00 p.m., 4-H Building
- 5 4-H Contest Night! (Demonstrations, Public Speaking, Parli Pro) 5pm

May Continued

- 7 **LAST DAY** to own and have in your possession-Market Sheep, Market Goats, Market Swine, Breeding Sheep and Breeding Goats.
8 **LAST DAY TO TURN IN Fremont County Swine Identification Forms and CSF Nomination Cards to the Extension Office before 5:00 p.m.**
10 WEIGH DAY-Market Sheep and Goats, 8:00 a.m.- 9:30 a.m., Pathfinder Park (For State Fair Must request DNA packets from State Fair website).
13 Fremont County Fair Board, 6:30 p.m., Pathfinder Park Event Center
15 4-H Horse Council, 7:00 p.m., Pathfinder Park
22 Market Rabbits MUST be born to Does you own (see April 21) on/or after (TBD by date of show at fair) in order to meet the "less than 70-day age limit".
26 **Holiday (Memorial Day Observed) Extension Office Closed**
TBD Registration Deadline for 1st Gymkhana, 4:00 p.m., Extension Office

JUNE

- TBD First Gymkhana, Pathfinder Park, 20205 Highway 115, Florence. Test at 7:30 a.m., Starts at 8:00 a.m. (ONE DAY ONLY)
2 **LAST DAY TO OFFICIALLY DROP** a project to be able to repeat it next year (**The ONLY way to officially drop a project is IN WRITING at the Extension Office or by e-mail no later than 5:00 p.m.**) Any projects dropped after June 1 FOR ANY REASON will mean an incomplete in that project.
2 Cake Decorating and Creative Cooks Contest at 5:30 p.m. at 4-H Building
4 4-H Council, 7:00 p.m., 4-H Building
9 **FAIR ENTRY OPEN for online entries**
11 Take County Fair Market Animal and Horse Tests in Extension Office. 5:30-7:30pm
12 Take County Fair Market Animal and Horse Tests in Extension Office. 8-10am
TBD Registration Deadline for 2nd Gymkhana, 4:00 p.m., Extension Office
TBD Second Gymkhana/Clinic, Pathfinder Park, 20205 Highway 115, Florence. Test at 7:30 a.m., Starts at 8:00 a.m. (ONE DAY ONLY)
10 Fremont County Fair Board, 6:30 p.m., Pathfinder Park Event Center
TBD State 4-H Conference, Colorado State University
26 4-H Horse Council, 7:00pm, Pathfinder Park.
TBD Registration Deadline for 3rd Gymkhana, 4:00 p.m. Extension Office
26 Retake tests for County Fair Market Animal and Horse Tests in Extension Office by appointment with Office.
26 Last day to have Horse Levels written and riding tests completed for the County Fair.
26 **MAIN CLUB LEADERS 4-H Attendance page due by 5:00 p.m. Attendance page MUST be filled out correctly! (REQUIRED)**
30 **LAST DAY to enter Fremont County Fair** at no charge.
TBD Third Gymkhana/Clinic, Pathfinder Park, 20205 Highway 115, Florence. Test at 7:30 a.m., Starts at 8:00 a.m. (ONE DAY ONLY)
TBD Rain date for 4-H Gymkhana will be determined if needed, Pathfinder Park, 20205 Highway 115, Florence

JULY

- 2 Late entries for Fremont County Fair accepted until 5:00 p.m., \$25.00 per project. No entries accepted after July 3.
2 4-H Council, 7:00 p.m., 4-H Building
3 **Independence Day Observed Extension Office Closed**
7 4-H Record Book Workshop, 5:30pm-7pm
8 Fremont County Fair Board, 6:30 p.m., Pathfinder Park Event Center
11 Fremont County Fair, Trap, Cactus Flats, 4:00 p.m.
12 Fremont County Fair, Skeet, Cactus Flats, 8:30 a.m. Check-In, 9:00 a.m. Shoot
13 Fremont County Fair, Sporting Clays, Cactus Flats, 9:00 a.m. Check-In, 9:30 a.m. Shoot
13 Fremont County Fair, Air Pistol, 4-H Building, Check-In 2:00 p.m., 2:30 p.m. Shoot
13 Fremont County Fair, Air Rifle, 4-H Building, Check-In 3:30 p.m., 4:00 p.m. Shoot
19 Fremont County Fair, Muzzleloading, Archery, Cactus Flats 8:30 a.m. Check in, 9:00 a.m. shoot, .22 Pistol to follow
20 Fremont County Fair, .22 Rifle, Cactus Flats, 7:30 a.m. Check-In, 8:00 a.m. Shoot
20 Shooting Sports Awards, Florence High School, 6:00 p.m.
TBD Fremont County 4-H Cornerstone, 7:00 p.m., 4-H Building
22 Shooting Sports Record Books, State Fair and Shirt Fees due in Extension Office by 5:00 p.m.
24 4-H Horse Council, 7:00 p.m.
24 Shooting Sports Record Book Judging, 6:00 p.m. Pathfinder Park Meeting Room
25-Aug. 2 Fremont County Fair
26 Set Up for County Fair at Pathfinder

AUGUST

- 2 Fremont County Fair Livestock Auction
3 Fremont County Fair Clean-Up Day (all 4-Her's requested to be here)
4-11 Non-perishable 4-H projects for the Colorado State Fair due in the Extension office by 4:00 p.m.
12 Fremont County Fair Board, 6:30 p.m., Pathfinder Park Event Center
12 Perishable 4-H projects for the Colorado State Fair due in the Extension office by 12 noon.
13 Shooting Sports Council 6:30 p.m. Pathfinder Park Event Center
14 **MAIN CLUB LEADERS** All County Reports are due by 5:00 p.m. The REQUIRED reports are as follows: Club Continuation, Community Service, and Completion Reports for members, Cloverbuds and leaders.
14 **MAIN CLUB LEADERS** 4-H Club/Organizational State Reports are due by 5:00 p.m. The REQUIRED reports are as follows: Annual Affirmative Action Report, Financial Report, Club Annual Plan, Club Budget, and Constitution & Bylaws.
14 **LAST DAY** to turn in Secretary and Reporter books for judging and Treasurer Books for outstanding club award credit to the Ext. Office no later than 5:00 p.m.
14 4-H Horse Council, 7:00 p.m.
21 Final Completion Display Day
21 **LAST DAY** to turn in record books for projects not completed at Fair.
21 **LAST DAY** to turn in ALL Animal e-Record Books to the Extension Office no later than 5:00 p.m. There is not going to be an option for completion only.
22- Sept 1 Colorado State Fair
23 Saturday, Livestock Record Book Judging, 8:00 a.m. Each club is requested to send at least 2 adults (leaders or parents) to help. Remember, if a club is not represented by at least one adult to help judge, that club's record books will not be eligible for record book awards. We encourage sending more than 2 if you can, the more people we have to help the faster it goes!

SEPTEMBER

- 1 **Holiday (Labor Day) Extension Office Closed**
3 4-H Council, 7:00 p.m., 4-H Building
3-4 Pickup Colorado State Fair projects at CSU Extension Office.
9 Fremont County Fair Board, 7:00 p.m., Pathfinder Park Event Center

OCTOBER

- 1 New 4-H Year Begins! Enrollment Open!
1 4-H Council, 7:00 p.m., 4-H Building
5-11 National 4-H Week
14 Fremont County Fair Board, 6:30 p.m., Pathfinder Park Event Center
11 4-H Discovery Day and Open House
20 Enrollment Night
27 CSU Extension Advisory Committee, 6:00 p.m., 4-H Building
27 Fremont County 4-H Cornerstone, 7:00 p.m., 4-H Building
Nov. 6 Achievement Awards Program



4-H Member Enrollment Form

Fremont County Extension Office
6655 State Hwy 115
Florence, CO 81226
Office: 719.276.7390 Fax: 719.276.7397
Email: csuext@fremontco.com
Online enrollment:
[www.https://colorado.4honline.com](https://colorado.4honline.com)

2024-2025 Enrollment Year

Enrollment Fee **\$35.00**

Horse Project Insurance Fee **\$1.00**

Shooting Sports Project Fee **\$10.00**, plus **\$5** for each additional discipline

Cloverbuds Supply Fee **\$5.00**

Note: Families will need to purchase project manuals and there may be additional project fees such as supplies, club dues, etc.

All 4-H ages are based on your age as of 12/31/24

We encourage Enrollment by Dec. 4th, but new enrollments may be accepted at any time.

Re-Enrollment Deadline is Feb. 1, 2025. Late Re-Enrollment Fee is \$30 per member.

For Office Use: Date Paid: _____ Amount _____ Cash, Check _____, or EventBrite

Club Joining _____

Note: If your physical address is not in Fremont Count you will need to fill out an Out of County Application and/or Continuation Form.

Youth Legal Name (please print) _____
First (Nickname) Middle Initial Last

Address _____
Street Physical Address and PO Box if Mailing Address City Zip

School _____ Grade _____ Birth Date _____ Age: _____ Years in 4-H _____ Member Cell _____
(not published, internal use only)

Residence (check one) Farm Rural/10,000 Town/10 - 50,000 Suburb/50,000 City/50,000

Family E-mail (required) _____
(We communicate with our families by e-mail)

Member E-mail address if they'd like to receive notifications _____

List any special accommodation for a disability to participate in this program. _____

Ethnicity (check one) Hispanic or Latino Not Hispanic or Latino

Race (check one) White Black/African American Alaskan/Am Indian Native Hawaiian/Pac.Islander Asian Prefer Not to State

Gender: Male Female Other/Unidentified T-Shirt Size: Youth: _____ Adult: _____

Parent 1 _____
First and Last **Parent 2** _____
First and Last

Address (if different) _____ **Address** (if different) _____

City _____ **Zip** _____ **City** _____ **Zip** _____

Home () _____ **Work** _____ **Home** () _____ **Work** _____

Cell Phone(s) () _____ **Cell Phone(s)** () _____

Other: _____ **Other:** _____

Parent Military Information:
Member of Military? Y N What Branch? _____ Reserve or Guard? _____

Project Name	Project Unit or level # if Applicable	Office Use Only Add Date	Office Use Only Drop Date	For Office Use Only

Signatures required on back.

COLORADO 4-H CODE OF CONDUCT

4-H members, leaders, parents and other adults participating in 4-H programs will:

1. Adhere to program rules, curfews, dress codes, policies, and rules of the facility being used.
2. Conduct themselves in a courteous, respectful manner, use appropriate language, exhibit good sportsmanship, and act as positive role models.
3. Abstain from illegal behaviors, use of alcohol, marijuana, illegal or illicit drugs, and tobacco including e-cig, and vaping device during 4-H events and activities.
4. Fully participate in scheduled activities.
5. Respect other's property and privacy rights.
6. Respect the rights and authority of parents, leaders and Extension Agents.
7. Abstain from abuse (physical and/or verbal) and harassment
8. Accept personal responsibility for behavior including any financial damage.
9. Be responsible for any financial damage caused by inappropriate behavior.
10. Adhere to principles and rules of safety.

Consequences for violating any of this code of conduct may include, but are not limited to: removal from participation in the event in which the code of conduct has been violated (at the individual's expense); sanctions on participating in future 4-H events; forfeiture of financial support for the event; removal from offices held, etc.

Behavior outside of 4-H activities can affect "member in good standing" or "volunteer in good standing" status.

It is the responsibility of all program participants to reinforce the code of conduct and intervene when necessary to enforce the rules.

Fremont County 4-H Completion Requirements

1. Fremont County 4-H members must enroll by the appropriate deadlines.
2. Members must pay all appropriate fees to the Extension office within stated deadlines.
3. Members must attend at least 50% of regularly scheduled club meetings with a minimum of 2 meetings prior to July 1. Project meetings, practices, workshops, community service, etc. do not count towards club attendance.
4. Members must present at least one project related educational demonstration for each project they are enrolled in. The demonstration should be approved by your Main 4-H club leader.
5. Members must exhibit the project. Exhibiting may be accomplished by entering in the County Fair, Final Completion Display Day, or other livestock show, event, meeting, or other activity/location approved by the Extension Office. General project exhibits should follow the specific requirements for project exhibits as listed in the Fremont County Fair Book unless other arrangements are made through the Extension Office. For livestock projects, in the event your animal should die or become injured, the livestock project record book **MUST** include a complete explanation of the situation.
6. Members must participate in a citizenship, community service, or community pride project during the current year. This can be accomplished through the local 4-H club, school, church, or other youth organization.
7. 4-H record books must be completed, turned in by the deadline, and score a minimum of 70% to be considered satisfactory and complete.
8. For projects to be considered complete for the 4-H year, all requirements must be completed and satisfactory documentation turned in by August 22th.
9. To maintain good standing in 4-H, at least 1 project must be completed. To enroll in a project again, it must be completed.

Failure to satisfactorily complete these requirements by August 22th of the current year will result in the 4-H member's good standing status being reviewed by the Extension Office. Members may document any legitimate reasons (Ex: Injury/Illness, family situation, Acts of God destroying a project, etc.) for failure to complete the requirements and submit to the Extension Office. "Not having enough time or not knowing a deadline" is NOT a legitimate reason for non-completion. Each member may drop projects or membership up to June 1st of the current year with no fault regarding completion requirements.

4-H members must complete a project this year to re-enroll in that project next year. If a project is incomplete and the member wants to re-enroll in the project next year, they must meet with the Extension Office to create a project remediation plan which must be completed before they will be allowed to re-enroll in that project.

By signing this form, we are stating that we have read and understand the 4-H enrollment rules, deadlines and requirements. We have read and agreed to abide by the 4-H Code of Conduct on the back of this form.

Member's Signature (required)

Date

Parent or guardian signature (required)

Date

PERMISSION TO USE CHILD'S PHOTOGRAPH FORM

Colorado State University Extension would like to share the positive results of youth/volunteer participation in Extension and 4-H Youth Development events. However, in some cases, parents or guardians may want to deny this publicity. If you DO NOT want your child's picture used for certain promotional efforts, select the appropriate option and sign below.

- I APPROVE that CSU Extension and 4-H Youth Development can use my child's picture for promotional efforts.
 I DO NOT APPROVE for CSU Extension and 4-H Youth Development to use my child's picture for promotional efforts.

Signature of Parent or Legal Guardian _____ (Date) _____

Medical Authorization

I hereby give my permission to officials to call a doctor or emergency medical service and for the doctor, hospital or medical service to provide emergency medical or surgical care for my child should an emergency arise. It is understood that event officials will make a conscientious effort to locate emergency contacts before any action will be taken. If it is not possible to locate emergency contacts listed I/we will accept the expense of the emergency medical or surgical treatment.

- I agree with the above statement. I disagree with the above statement.

Signature of Parent or Legal Guardian _____ (Date) _____

Animal Care and Housing Form

THIS IS ONLY REQUIRED FOR THOSE ENROLLING IN ONE OR MORE ANIMAL PROJECTS (examples below):

Beef Cattle, Dairy Cattle, Goat, Horse, Poultry, Sheep, Swine, Dog, Rabbit, Cat, etc.

It is the responsibility of every 4-H Member to ensure that proper care is taken of their animal(s) according to acceptable methods of good animal husbandry, as set forth by Colorado State University Extension and the Colorado Department of Agriculture. A healthy animal requires sufficient food, water, shelter, and appropriate health care. Cruel and inhumane training methods are prohibited in the Colorado State University Extension 4-H Program and will not be tolerated. Specific animal husbandry guidelines and humane training methods are provided in the appropriate 4-H manual. It is necessary for the local county Extension office to know the location of all 4-H livestock/horse projects.

The Colorado 4-H current project recommendation for primary care states that "4-H members will provide primary and continuous care of their project animals." **Primary care is defined as the 4-H member making the decisions for and/or providing the care, handling, and training of their animal project a majority of the time.** Primary care exemption must be approved by the designated local representative body comprised of at least one Extension agent and other committee representatives as appointed by the Extension office. The county will determine a one-step appeal process if request is denied.

Each situation for exemption of primary care will be evaluated within the exhibitor's county by an appropriate review body. An approval or disapproval of the situation will be communicated to the participant(s) in writing. An appeal may be submitted through established grievance channels established in each county. 4-H members and guardians acknowledge that approval of facilities and animal welfare checks may be conducted at any time by the local county Extension agent.

Submission of the animal care document is required by all 4-H animal project participants each 4-H year.

I agree to the following terms as stated above.

Signature of Parent or Legal Guardian _____ (Date) _____

Colorado State University Extension is an equal opportunity provider. Colorado State University does not discriminate on the basis of disability and is committed to providing reasonable accommodations. CSU's Office of Engagement and Extension ensures meaningful access and equal opportunities to participate to individuals whose first language is not English.

Colorado State University Extension es un proveedor que ofrece igualdad de oportunidades. Colorado State University no discrimina por motivos de discapacidad y se compromete a proporcionar adaptaciones razonables. Office of Engagement and Extension de CSU garantiza acceso significativo e igualdad de oportunidades para participar a las personas quienes su primer idioma no es el inglés.

READ THIS DOCUMENT COMPLETELY BEFORE SIGNING. ITS EFFECT IS TO RELEASE _____ COUNTY, COLORADO 4-H FOUNDATION, COLORADO STATE UNIVERSITY, ITS GOVERNING BOARD, AND THE STATE OF COLORADO FROM ANY LIABILITY RESULTING FROM YOUR PARTICIPATION IN THE ACTIVITIES DESCRIBED BELOW, AND TO WAIVE ALL CLAIMS FOR DAMAGES OR LOSSES AGAINST THE UNIVERSITY WHICH MAY ARISE FROM SUCH ACTIVITIES EVEN IF THEY RESULT FROM NEGLIGENCE.

Permission for Youth to participate in 4-H In-person Programming

I understand that my child, _____, will be participating in the _____ Activities that may include (contests, workshops, banquets, dances and optional activities may include numerous inherent risks. I am aware and have discussed the following inherent risks with my child:

The specific risks vary from one activity to another, but the risks range from:

- Minor injuries such as scratches, bruises, and sprains;
- Major injuries such as eye injury or concussions
- Exposure to COVID-19.

RELEASE FROM RESPONSIBILITY, ASSUMPTION OF RISK, AND WAIVER

PARTICIPANT'S FULL NAME: _____ **Date of Birth** _____
Address: _____ **City** _____ **State** _____ **ZIP** _____

I, the undersigned participant, exercising my own free choice to participate voluntarily in the activities described above, and promising to take due care during such participation, hereby acknowledge that I have been informed of the nature of the activities and that I am aware of the hazards and risks which may be associated with my participation in the above-named activities, including the risks of bodily injury, death or damage to property which may occur from known or unknown causes. I understand, accept, and assume all such hazards and risks, and waive all claims against _____ County, Colorado 4-H Foundation, State of Colorado, The Board of Governors of the Colorado State University System, Colorado State University, and other persons as set forth above. I understand that I am solely responsible for any costs arising out of any bodily injury or property damage that I may sustain through my participation in normal or unusual acts associated with the above-named activities, regardless of whose fault may be the cause of my injuries or damages, EVEN IF CAUSED BY CARELESSNESS OR NEGLIGENCE.

Further, I hereby indemnify and hold harmless The Board of Governors of the Colorado State University System and Colorado State University, Colorado 4-H Foundation, and their members, officers, agents, employees, and any other persons, or entities acting on their behalf, and the successors and assigns for any and all of the aforementioned persons and entities, against any and all claims, demands, and causes of action whatsoever, whether presently known or unknown, of any person who suffers any injury, disability, death or other harm, to person or property or both, as a result of my negligent acts or omissions arising out of my participation in and/or presence at the above listed activities.

I have had sufficient time to review and seek explanation of the provisions contained above, have carefully read them, understand them fully, and agree to be bound by them. After careful deliberation, I voluntarily give my consent and agree to this Release From Responsibility, Assumption of Risk, and Waiver.

If participant is under the age of 18, his or her parent or legal guardian must sign:

I, (printed name) _____, am the parent or legal guardian of the _____ participant who has signed above. I have read and I understand the provisions of this document, and acting on behalf of the participant, I consent to the participant taking part in the activities described above, and I fully enter into and agree to the above Release from Responsibility, Assumption of Risk, and Waiver as authorized pursuant to C.R.S. section 13-22-107.

Signature of Parent or Legal Guardian

(date)