



Step by Step How To

Cloverbuds: Ages 5-7

4-H: Ages 8-18



FREMONT COUNTY
COLORADO STATE UNIVERSITY
EXTENSION

6655 State Hwy 115

Florence, Co, 81226

Office Hours: Monday-Thursday 7:00-5:00

719-276-7390

Visit v2.4honline.com to enroll or stop by the Extension Office. The enrollment fee in Fremont County is \$40.00, payable to the Extension Office. When you enroll, you will also want to purchase project books. Additional fees may apply as determined by project.

4-H To-Do List



- ☐ Pick a Club
- ☐ Pick your projects
- ☐ Get enrolled, pay fees, and order project books
- ☐ Attend Club Meetings (min. 50%)
- ☐ Work on Projects
- ☐ Give a Demonstration for each project
- ☐ Download and complete a project specific record book- Minimum of a 70% score
- ☐ Read the Newsletter every month
- ☐ Make sure you are getting emails from the office!
- ☐ Do a community service
- ☐ Complete Fair Entry Form to enter fair
- ☐ Show your project
- ☐ Turn in your record book
- ☐ Evaluate your Experience
- ☐ Attend Achievement Awards Program

Anyone at the office is happy to help answer any questions you have. We also provided our new family support staff's contact info below!



FREMONT COUNTY
COLORADO STATE UNIVERSITY
EXTENSION

Kassy Barry-Tracy
4-H Program Coordinator
New Family Support
719-276-7390

kassundra.tracy@fremontco.com



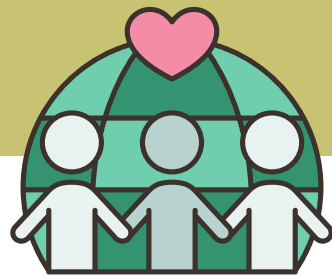
Step 1: Find a Club!



There are clubs all over Fremont County – search through the list and pick one that fits your schedule or has friends you know! Your club leader will be your most important point of contact aside from your extension agent



Clubs meet monthly and consist of a 5–7 member leadership team and additional members. Members can participate in meetings by voting and speaking up, or even run for an office! You have to attend 50% of your club meetings from the time of enrollment to complete a project!



Complete Community Service with your Club! Various community service opportunities will be available throughout the year—most commonly through your club. Community service allows us to improve and give back to those around us.

2025-2026 Club List with Leader Contact Information as of 8/6/25

If you are interested in a club whose deadline has passed, please contact the office. Contact your leader after joining so they can get your contact information. See website for updated list at fremont.extension.colostate.edu
Recommended Enrollment Dec. 15th, 2025. Re-Enrollment Deadline Feb. 2nd, 2026. Late fee \$30 per member.
New families can enroll at any time with no late fee.

Pathfinder Park Event Center and Extension Office: 6655 State Hwy 115, Florence

4-H Building Address: 1595 S 9th St., Canon City

Club	Leader	Leader	Leader	Meeting Information	Location
Barbwire-N-Roses Deadline December 31, 2025 Limit 5 new members	Charla Wellborn chachawellborn@yahoo.com 719-947-5345			2 nd Thurs., 6:30 PM, Penrose Library at 35 7th Ave., Penrose from January to July (If a meeting is changed everyone is notified by text)	Penrose Area
Beaver Park AG Deadline February 2, 2026	Amanda Ellis ellisja02@aol.com 719-429-5715	Kristina Brubaker ktbrubaker@aol.com 719-371-1839		1st Thurs., 6:30 PM, Penrose Park & Rec. Community Bldg. 401 Park Place, Penrose from October to June	Penrose Area
Buckles and Bows Deadline February 2, 2026	Cortney Richardson 719-371-2399 Ctrichardson1229@gmail.com			2 nd Friday at the 4-H Building in Canon City at 6 PM January- July	Canon City Area
Clover Rovers Deadline January 30, 2026	Nessa Dalby nessamarie2000@icloud.com 719-221-0227	Corrin Hogan 719-429-0350 Corrinhogan77@gmail.com		2nd Sun., 3:00 PM, Pathfinder Park Classroom November to June (May meeting date will change due to Mother's Day)	Florence Area
Creative Kids Limit 25 Members Deadline January 29, 2026	Jennifer Stewart hyla13@bresnan.net 719-649-5460	Krystina DelDuca Krystina.delduca@fremontco.com 719-371-1795		2 nd Thursday, 4-H Building in Canon City 6:00 p.m. from November to July.	Canon City Area
Four Mile Deadline March 2, 2026	Delores Comstock ddcomstock@bresnan.net 719-275-6722 719-431-0825			4 th Thurs., 6:30 PM, 4-H Building in Canon City from January to July (March meeting date may change due to Spring Break)	Canon City Area
Go For Broke Deadline March 1, 2026	Nicki Hobby goforbroke4hclub@gmail.com 719-429-1090	Lisa West westl2010@hotmail.com 719-568-5155		3rd Tues., 7:00 PM, Penrose Library at 35 7th Ave., Penrose from January to July (If a meeting is changed everyone is notified by email) (March and June meeting varies)	Penrose Area
Los Caballeros Deadline December 31, 2025 Limit 20 Members	Lynn Adamic adamic.lynn28@gmail.com 719-429-0055	Russ Adamic Russ.adamic@yahoo.com 719-371-6472	Brittany Carr Clintbrittanycarr@gmail.com 719-371-6080	1st Monday., 7:00 PM., November to July at Pathfinder Park Classroom. Dec. meeting varies.	Canon/ Florence Area
Rocky Mountain	Jolene DeVries jdevriesris@gmail.com 719-942-4070	Samantha DeVries-Voeglein Sammi.devries81223@gmail.com 719-370-7247		3rd Sun., 3:30 PM, Cotopaxi School Cafeteria from October to July. If meeting falls on a holiday, it will move to a different day by agreement.	Cotopaxi Area
Tally Ho January 30, 2026 Limit 30 Members	Renee Watters renee.watters@Ccsre1.org 719-269-8288	Abbie Patton miteteacher@hotmail.com 970-596-0353		2nd Tues., 6:30 PM, 4-H Building in Canon City. October to July.	Canon City Area
Wetmore Wizards	Tami Ratkovich wetmore4h@yahoo.com 719-429-6071			1st Mon., 6:30 PM, Wetmore Community Center, 95 County Road 393 Wetmore from October to July. Dates may vary due to conflicts.	Wetmore Area
Fremont Cloverbuds For members ages 5-7 Member Limit 25	Sydney Swart sydneymswart123@outlook.com 719-429-6850			2 nd Saturday 1-3 pm 4-H Building January-June	Canon City Area



Step 2: Pick Your Project!



4-H has so many projects to offer! Find something that interests you or give something new a shot!



2025-2026 Project List Revised 8/18/2025

**Encouraged Enrollment
Dec. 15th, 2025**

**Re-Enrollment Deadline Feb.
2nd, 2026. Late Fee \$30 per
member.**

**New members can enroll at
any time without a late fee.**

**Add Project Deadline April
30th
Drop Project Deadline June 1st**

Enrollment Fee **\$40.00**
Horse Project Ins. Fee **\$1.00**
Cloverbuds Fee **\$5.00**
Shooting Sports Project Fee
\$15.00, plus **\$5** for each
additional discipline

*Note: Families may purchase project
manuals through the office or on your
own. There may be additional project
fees such as supplies, club dues, etc.*

Each project is different. Some
projects are more self-driven than
others and may be completed
independently at home. Many of
our project have support form
leaders who hold meetings.

We have a lot of amazing
volunteers, but unfortunately, we
do not have leaders for every
project offered.

Project meetings may happen
once a year, a few times a year,
once a month, twice a month, or
weekly. This varies by volunteer
availability, project content, and
other factors. If you need
assistance figuring out your
projects, we encourage you to call
the office.

Ages Divisions
Junior (Jr) Ages 8-10
Intermediate (Int) Ages 11-13
Senior (Sr) Ages 14 and up
*All 4-H ages are based on your
age as of 12/31/25.*

All projects may be taken by Jr.,
Int., and Sr., members unless
otherwise indicated as age
specific according to your age on.
Look for Jr., Int., or Sr. after the
project title.

**** Indicates that there are new
manuals for the projects. Please
order new manuals.**

For more information you can call the
Fremont County Extension Office at
719-276-7390. Office hours are
Monday through Thursday 7:00 a.m.
to 5:00 p.m. The office is closed on
all county holidays and Fridays. The
Extension Office is located at the
Pathfinder Park Event Center at 6655
State Hwy 115 Florence, CO. The 4-H
Building is located at 1595 S 9th St
Canon City, CO.

Cloverbuds (5-7 Year Olds)

Cloverbuds is the **ONLY** project
that children ages 5, 6 and 7 may
choose to take and their age is as
of Dec. 31, 2025. Parents and
children together to work on early
childhood development.
The Cloverbud program in non-
competitive. See informational
flyer.

Animal Projects

Breeding Beef
Market Beef
(Has project leaders, must be enrolled
by Jan. 28th for weigh day Jan. 31st.)
Dairy Cow

Breeding Goat (Includes dairy &
pygmy, angora, cashmere, etc.)
Market Goat (Weigh Day May 9th)
Utility Goat (has project leader)

Breeding Sheep
Market Sheep (Weigh Day May 9th)

Market Swine (Weigh Day May 9th)

Horse (has project leaders)
Horse (ID forms Due April 30th)
**Note: there is a \$1.00 insurance fee to
be paid at time of enrollment.**

Poultry (has project leaders)
Show Bird
Breeding Chicken
Market Chicken
Duck
Geese
Breeding Turkey
Market Turkey
Game Birds

Rabbit (has project leaders)
Breeding Rabbit
Market Rabbit

Horseless Horse

Making Horse Sense, Unit 1
Health & Horsemanship, Unit 2
Breaking Ground, Unit 3
Brushing Up on Horses, Unit 4

Pet Animal Projects

Cat

Purr-fect Pals, Unit 1
Climbing Up, Unit 2
Leaping Forward, Unit 3

Dog (has project leaders)
Must use Dog record book.

****Pocket Pets** – Must list what animal
you are doing. (County Project not eligible
for State Fair. This is for the non-breeding
project. Must use the Companion Record
Book)

General Projects

Cake Decorating (has project
leaders)

Edible Decorations, Unit 1
Single Layer Decorating with Tips,
Unit 2
Double Layer Decorating with Tips,
Unit 3
Character Cakes, Unit 4
Small Treats, Unit 5
Cut-Up Cakes, Unit 6
Flat Surface/Nail Flowers, Unit 7
(Int./Sr. only)
Fondant, Unit 8 (Int./Sr. only)
Lily Flower/Nail Flowers, Unit 9
(Int./Sr. only)
Tiered Cakes, Unit 10 (Sr. only)
Molds, Unit 11 (Sr. only)
Advanced Cake Decorating, Unit 12
(Sr. only)

Ceramics

Glazes, Unit 1
Underglazes, Unit 2
Overglazes, Unit 3
Unfired Finishes, Unit 4
Porcelain Dolls, Unit 5
Hand Construction with Stoneware,
Unit 6

Clothing, Artistic

Upcycle Your Style
Creative Sewing, Unit 5
Create Your Own, Unit 7, (Int./Sr.
Only)
Buymanship (Int./Sr. Only) Project
information is online member. Must
download from website.

Clothing Construction

Clothing STEAM, Unit 1
Clothing STEAM, Unit 2
Clothing STEAM, Unit 3 (Int./Sr. Only)
Sewing for Others, Unit 7
Recycled Clothing, Unit 8

Computer Science

Programming through Scratch Level 1
(Beg. Programming)
Programming through Scratch Level 2
(Int. Programming)
Programming through Scratch Level 3
(Adv. Programming)
Computer Science and Coding
(Int./Sr.)

Discover 4-H/Welcome to 4-H

(has project leaders) Project not eligible for State Fair.

Electricity

Magic of Electricity, Unit 1
Investigating Electricity, Unit 2
Wired for Power, Unit 3
Entering Electronics, Unit 4 (Sr. Only)

Embryology

Entomology (has project leader)

Teaming with Insects, Unit 1
Teaming with Insects, Unit 2
Teaming with Insects, Unit 3

Beekeeping (has project leader)

Beekeeping, Unit 1
Beekeeping, Unit 2
Beekeeping, Unit 3
Adv. Beekeeping, Unit 4 (Int./Sr. Only)

Filmmaking

4-H Filmmaking

Food and Nutrition (has project leader)

Cooking 101
Cooking 201
Cooking 301
Cooking 401
Outdoor Cooking, Unit 25
Cultural/Ethnic Foods, Unit 30,
(Int./Sr. Only)
Foreign Cookery, Unit 35, (Int./Sr.
Only)

Food Preservation

Drying, Unit 40
Freezing, Unit 41
Boiling Water Bath, Unit 42
Pressure Canning, Unit 43 (Int./Sr.
only)

Gardening (has project leader)

See Them Sprout, Unit 1
Let's Get Growing, Unit 2
Take Your Pick, Unit 3
Growing Profits, Unit 4 (Sr. Only)

Global Citizenship

Study of Another Country
Hosting A Delegate from Another
Country

Heritage Arts

Crochet
Knitting
Needle Arts
Beginning Quilter, Unit 1
Quilting the Best Better, Unit 2-6
Misc. Fiber (Rug Making, Spinning,
Weaving, Ethnic Arts & Macramé)
Misc. Non-Fiber (Beading, Silver
Smithing, Paper Scrolling, etc.)

Home Design and Decor

Learn about color, texture, line &
design, Unit 1
Safety Inside and Out, Unit 2
Emergency Planning and
Redecorating, Unit 3
Careers In Interior Design and
Decorating, Unit 4

Leadership (to be done one year and then move up except last one)

Leadership Skills You Never Outgrow
(Jr. Only)
Leadership Road Trip (Int./Sr.)
Put Leadership to Practice (Int./Sr.)
Refining Leadership Skills (Sr.)
Community Service Project (Sr.)

Leathercraft (has leaders)

Intro Leathercraft/Stamping, Unit 1
Beginning Carving, Unit 2
Intermediate Carving, Unit 3
Advanced Leather Carving, Unit 4
Advanced Stamping, Unit 5
Sewing Leather, Unit 6
Braiding and Untooled Leather, Unit 7
Master Leathercraft, Unit 8
Making and Rebuilding Saddles, Unit 9
Leathercraft Leader Guide

Model Rocketry (has project leader)

Introduction (Balsa Fins), Unit 1
Construction & Flight of Model
Rockets, Unit 2
Intermediate Rocketry (Balsa Fins),
Unit 3
Advanced Rocketry, Unit 4
Designer Rocketry, Unit 6

Outdoor Adventure

Hiking Trails, Unit 1
Camping Adventures, Unit 2
Backpacking Expeditions, Unit 3

Photography (has project leader)

Photography Basics, Unit 1
Photography Basic Cont., Unit 2
Next Level, Unit 3
Mastering Photography, Unit 4
Low Light (Lightening), Unit 5
Advanced Photography, Unit 6
(Int./Sr.)

Public Speaking (has project leader)

(4-H Contest Night exhibits and
completes the Project)

Robotics

Units 1-3 No Kits Allowed

Give Robots a Hand, Unit 1
Robots on the Move, Unit 2
Mechatronics, Unit 3

Scrapbooking

One Page Layout, Two Page Layout,
Album, *Tag Making (Jr.), and *Card
Making (Int./Sr.)
Scrapbooking

Small Engines

Crank It Up, Unit 1
Warm It Up, Unit 2
Tune It Up, Unit 3
Advanced Small Engines, Unit 4 (Self-
Determined)

Sportfishing

Take the Bait, Unit 1
Reel in the Fun, Unit 2
Cast into the Future, Unit 3

Shooting Sports (has project leaders) **Note: there is a \$15.00 range fee to be paid at time of enrollment, plus a \$5 per additional discipline fee.**

Air Pistol (Must be a 2nd year shooter
to do this discipline)

Air Rifle

Archery

.22 Rifle

.22 Pistol (Must have completed Air
Pistol to do this discipline)

Shotgun

Muzzleloading

Outdoor Skills

***(You must enroll in each discipline
you want to participate in by the
enrollment deadline and drop by
deadline those not completing.)***

Self-Determined

County Project not eligible for State
Fair.

Project is a topic of your choosing.

Veterinary Science

From Alredales to Zebras, Unit 1
All Systems Go, Unit 2
On The Cutting Edge, Unit 3

Visual Arts

Portfolio Pathways (painting, printing
& graphic design)
Sketchbook Crossroads (drawing,
fiber art & sculpting)

Welding/Metalworking

Intro to Welding, Unit 1
Metal Fabrication, Unit 2
Advanced Metal Fabrication, Unit 3
Large Exhibit Fabrication, Unit 4

Wildlife Conservation

The Worth of Wild Roots, Unit 1
Living Wild in an Ecosystem, Unit 2
Managing in a World with You and Me,
Unit 3

Woodworking

Measuring Up, Unit 1
Making the Cut, Unit 2
Nailing It Together, Unit 3
Finishing Up, Unit 4



FREMONT COUNTY
COLORADO STATE UNIVERSITY
EXTENSION

Colorado State University Extension is an equal
opportunity provider. | Colorado State University does not
discriminate on the basis of disability and is committed to
providing reasonable accommodations. | CSU's Office of
Engagement and Extension ensures meaningful access
and equal opportunities to participate to individuals whose
first language is not English.

Colorado State University Extension es un proveedor que
ofrece igualdad de oportunidades. | Colorado State
University no discrimina por motivos de discapacidad y se
compromete a proporcionar adaptaciones razonables. |
Office of Engagement and Extension de CSU garantiza
acceso significativo e igualdad de oportunidades para
participar a las personas quienes su primer idioma no es
el inglés. ColStat003



Project Meetings



Some of the projects you choose have project leaders and meetings that are available to you and are wonderful resources!

Dog- Wednesdays starting in January 6:30 p.m.-8:00 p.m.

Foods- Fridays starting in January 9:00 a.m.-12:00 p.m.

1/16- All Units	3/13- All Units	5/1- All Units	6/26- All Units
1/30- Unit 301 Only	3/20- Unit 201 Only	5/15- All Units	
2/13- All Units	4/3- All Units	5/29- Unit 201 Only	
2/27- Unit 201 Only	4/17 Unit 301 Only	6/12- Unit 201 Only	

Small Animals- Starting in January, 2nd Monday of each month 6:00-8:00 p.m.

Cake Decorating 1st & 3rd Monday 5pm-8pm starting in March

Leathercraft- 1st & 3rd Wednesdays of each month 6:00 p.m.-7:00 p.m.

Photography (meeting dates and times TBD)

Utility & Dairy Goat (meeting dates and times TBD)

Meeting Dates TBD based on Enrollment-Will start in the Spring

(Discovering 4-H - Public Speaking - Entomology - Gardening)

Horse Practices- 3/23, 4/6, 4/20, 5/4, 5/11, 6/1, 6/22, 7/6, 7/13, 7/20

Shooting Sports- Weather permitting start dates and practices!

Air Rifle - Mondays beginning 4/6/26 6:00 pm.

Archery- Tuesdays beginning 4/21/26 5:30pm

Muzzleloading- Tuesdays beginning 4/14/26 5:30pm

.22 Rifle- Tuesdays beginning 4/7/24 5:30

Shotgun- Thursday 3/19/26 6:00pm-First Time Shotgun kids ONLY!

Shotgun- Thursdays beginning 3/26/26 6:00pm-Everyone



Last day to ADD projects is April 30th!

Last day to DROP projects is June 1st!

Add Deadlines for specific projects include:

Last day to enroll in Beef- January 28th

**Last day to enroll in Poultry, Rabbit, Sheep, Goat, and Swine-
April 1st**

Last day to enroll in Dog, Cat, Horse April 30th

Project Manuals

We highly recommend getting your project manuals as soon as possible! These are the guide to your project and are great resources! Our Project Manual Order Form Provides a color-coded key that tells you where you can purchase your manual.

Shop 4-H <https://shop4-h.org>



**Ohio State University
<https://extensionpubs.osu.edu/>**



**University of Illinois State 4-H Office
(Champaign, IL) 217- 333-0910**

**University of Nebraska -- Lincoln
<https://4hcurriculum.unl.edu/index.php/main/index>**



**4-H Website
<http://co4h.colostate.edu/program-areas/colorado-4-h-project-information/>**



**Purdue University
<https://mdc.itap.purdue.edu/>**



We will be sending out an email for each project with the links to manuals in February and again in April. If you have questions please reach out to the Extension Office.

Step 3: Read the Monthly Newsletter!

You will automatically receive a newsletter via email every month after you are enrolled. It contains all 4-H events along with dates and times. It is an awesome resource for finding out what is going on in the 4-H Community! Watch your newsletter closely--especially for important due dates for animal i.d.'s, fair entry forms etc.

The newsletter is also posted on our Fremont County Extension Website and on our Facebook page.

If for some reason you are not receiving it please give us a call and we can see what is going on!

IMPORTANT!



Communication Information

Our main source of communication is Email!



Be on the lookout for emails from...

Julianne Dinkel-julianne.dinkel@colostate.edu

Kelsey Story- kelsey.story@colostate.edu

Kassy Tracy-kassundra.tracy@fremontcountyco.gov

Theresa Clubb-Theresa.clubb@fremontcountyco.gov

4HOnline - Colorado 4-H Youth Development
Club and Project Leaders!



If you aren't seeing emails from us please check your junk folder or give the office a call
719-276-7390



Like and Follow us on Facebook!

Fremont County Extension & 4-H
and
Fremont County 4-H Shooting Sports



Step 4: Work On & Complete Your Project!

100%

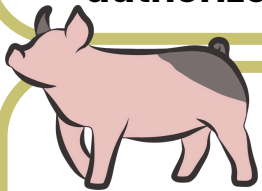
In order to complete your project(s) you must complete the following:

- Attend 50% of your Club Meetings from the time of your enrollment with a minimum of 2 meetings.
- Give a demonstration on each of your projects
- Complete Community Service
- Complete and turn in your record book for each of your projects – Minimum Score of 70%
- Show your project!



Additional Shooting Sports Requirements

- All individuals who will be on the Florence PD Range must sign and turn in waiver to attend practice.
- Shooting Sports is a project not a club. Practices do not count as club meetings. You must join a club and attend 50% of your monthly meetings from date of enrollment.
- Must have a Colorado Hunters Education Card
 - we offer a class in February. If you do not attend this course, you are responsible for taking a separate class and bringing your hunters safety card to the office for our records. All 8-9 year olds must take the course offered by 4-H as DOW does not allow children under the age of 10 to test.
- Must attend discipline safety training
 - (first time participating in a discipline and first year Shooting Sports members)
- Must attend a minimum of 4 shooting sports practices on the range with an authorized shooting sports coach prior to County Fair Entry deadline.



Additional Livestock Requirements

- Exhibitors showing both large and small animals will be required to complete separate record books.
- MQA–Meat Quality Assurance– You will take this class in the spring (first time livestock members & first time Senior 4-H age members).
- Livestock Animal Test –The office provides a study guide for you. Tests are required for each market species you are enrolled in.
- Must attend weigh-ins/tag-ins (Beef, Goats, Sheep, and Swine)

Record Books

Entomology Record Book



Record books are required for each project that you complete.

To find the record book for your project you will go to

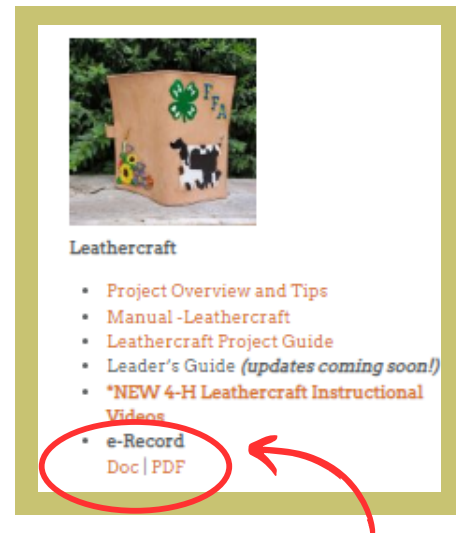
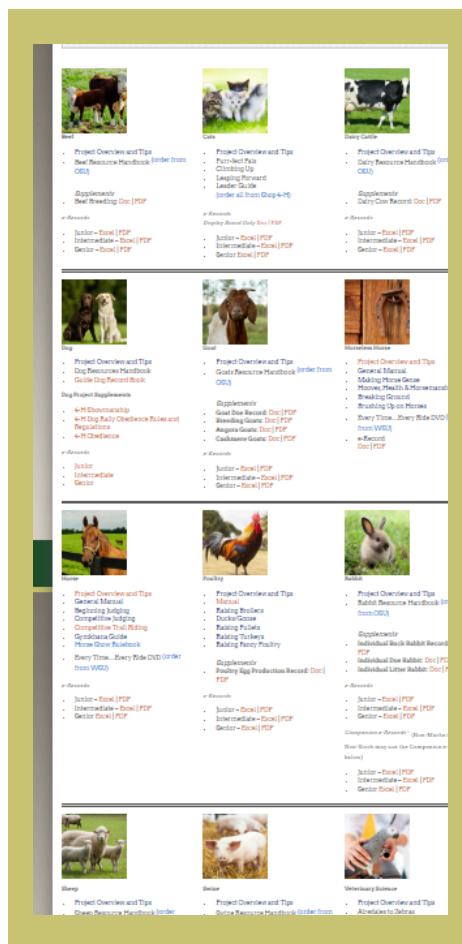
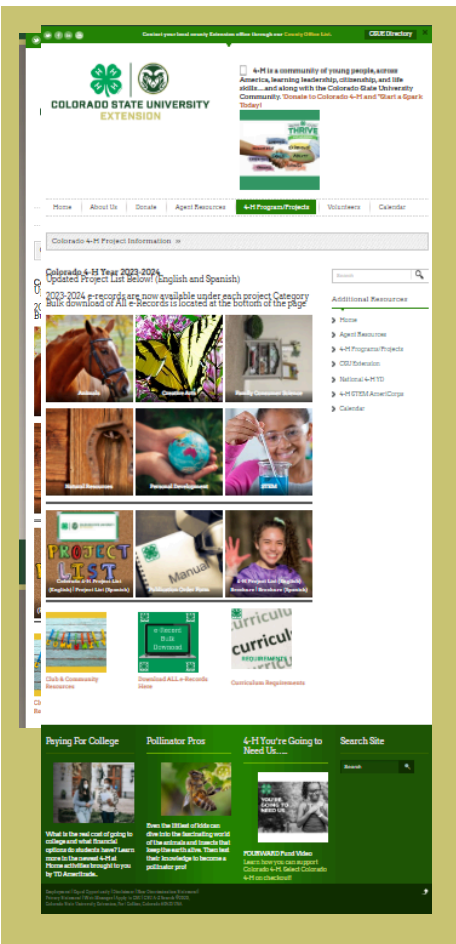
<https://fremont.extension.colostate.edu/>

Here we will walk you through how to find them!

If you hover over the 4-H tab there is a drop down menu at the very bottom of the list it says Record books. Click on that.

You will click on the category of your project and it will take you to a list where you can pick your project. Each project category will look different.

The project that you are in will determine what record book you will complete. Below is an example of Leathercraft



You will click on the version that works best for you and either print or download it so that you can complete your record book.

You have to get a 70% on your record book to complete your project. If after your record book is scored you did not achieve 70% or better you have an opportunity to fix it.

Due Dates!

General Project Record Books are required to be in a 3-prong folder or binder.

General Projects– July 26th 3:00–6:00 p.m.

Shooting Sports and Animal Record Books are required to be in a 3-prong folder. Please do not put pages in plastic sleeves!

Shooting Sports– July 21st by 5:00 p.m.

Animal Record Books– August 20th by 5:00 p.m.



2025-2026 FREMONT COUNTY 4-H CALENDAR (Revised 9/22/25)

Reminder that Fremont County is on a 4-day work week and the CSU Extension Office will be closed on Fridays. Dates, events, and locations are subject to change. We make every effort to provide as accurate a calendar as possible, but dates sometimes have to be changed. Changes will be listed in the monthly 4-H newsletter and on our website: www.fremont.extension.colostate.edu. Please contact the Extension Office (276-7390) for information or email csuext@fremontco.com.

OCTOBER

1 New 4-H Year Begins! Enrollment Open!
1 4-H Council, 7:00 p.m., 4-H Building
5-11 National 4-H Week
7 Shooting Sports Council Meeting 6:30 pm-Pathfinder Park Meeting Room
11 4-H Discovery Day and Open House
14 Fremont County Fair Board, 6:30 p.m., Pathfinder Park Event Center
16 Achievement Night 5:30 Potluck awards 6:00 p.m. Pathfinder Auditorium
20 Enrollment Night 5:00-6:30 p.m. @ Pathfinder Park-Extension Office
27 CSU Extension Advisory Committee, 6:00 p.m., 4-H Building
27 Fremont County 4-H Cornerstone, 7:00 p.m., 4-H Building
Nov. 6 Achievement Awards Program – Back up date

NOVEMBER

5 4-H Council, 7:00 p.m., Pathfinder Park, Officer Elections
6 Achievement Awards Program – Back up date
7-9 Colorado Leadership Camp, (11-13 4-H age), Glenwood Springs
11 **Holiday (Veterans Day) Extension Office Closed**
11 Fremont County Fair Board, 6:30 p.m., Pathfinder Park Event Center Park
TBD (14-15 or 21-22) Dare to Be You Camp (TBD 10-13 4-H age), State Fair Grounds
27 **Holiday (Thanksgiving) Extension Office Closed**

DECEMBER

No Fair Board This Month
3 4-H Council, 7:00 p.m., Pathfinder Park, officer Installation
5 4-H Holiday Craft Fair, 10am -6pm, Pathfinder Park
6 4-H Holiday Craft Fair, 8am – 3pm, Pathfinder Park
13 Mini Cooking Camp @ 1:00-4:30 @ 4-H Building
15 **LAST DAY- Early Enrollment** contest deadline for prize drawing. **We recommend all families enroll by Dec 15th.**
25 **Holiday (Christmas) Extension Office Closed**

JANUARY

1 **Holiday (New Year's Day observed) Extension Office Closed**
7 4-H Council, 7:00 p.m., 4-H Building
13 Fremont County Fair Board, 6:30 p.m., Pathfinder Park Event Center
19 Vet Mini Camp 8 a.m. -12:00 p.m. (ages 12+) Registration deadline 1/12/26
24-26 State Leadership Development Conference (LDC), Denver (ages 14-18)
26 CSU Extension Advisory Committee, 6:00 p.m., 4-H Building
26 Fremont County 4-H Cornerstone, 7:00 p.m., 4-H Building
28 **LAST DAY** to be enrolled in, own and have in your possession-Market Beef Project
28 **LAST DAY** to own and have in your possession-Breeding Beef and Dairy Cattle for County Fair
29 Enrollment Night 5:00 p.m.- 6:30 p.m. @ Pathfinder Park-Extension Office
31 Market Beef Weigh Day, 9:00 a.m.- 10:00 a.m.

FEBRUARY

2 **4-H Re-Enrollment Deadline.** Re-Enrollment Late Fee of \$30 per member after Feb. 3.
4 4-H Council, 7:00 p.m., 4-H Building
10 Fremont County Fair Board, 6:30 p.m., Pathfinder Park Event Center
16 **Holiday (Presidents' Day) Extension Office Closed**
20 Hunter Education for Shooting Sports (Must attend all 3 sessions) 5:00 p.m.– 9:00 p.m., 4-H Building
21 Hunter Education for Shooting Sports (Must attend all 3 sessions) 8:00 a.m. – 12:00 p.m., 4-H Building
26 4-H Officer Training for all Club Officers! 5:30pm – 9, Pathfinder Park Event Center
28 Hunter Education for Shooting Sports (Must attend all 3 session) 8:00 a.m. – 1:00 p.m. 4-H Bldg. & Florence PD Range.

MARCH

4 4-H Council, 7:00 p.m., 4-H Building
5 Mandatory Shotgun Safety Meeting 6:30 p.m. @ 4-H Building
9 Shooting Sports Council, 6:30 p.m. 4-H Building
10 Fremont County Fair Board, 6:30 p.m., Pathfinder Park Event Center
12 Mandatory Trap Workshop FIRST YEAR SHOTGUN MEMBERS ONLY 6:00 P.M. @ Cactus Flats Shooting Range
TBD District Retreat (ages 13 & older), Location TBD, Colorado
16 Mandatory Safety Meeting Air Rifle & .22 Rifle 6:30 p.m.-8:00 p.m. @ 4-H Building
21 Mandatory Horse Project Meeting & Potluck 4:00 p.m. @ Pathfinder Event Center Classroom
23 Mandatory Safety Meeting Air Rifle & .22 Rifle 6:30 p.m.-8:00 p.m. @ 4-H Building
27-29 Youth Fest, (ages 11-13) State Fair Grounds

APRIL

1 CSF Nomination Cards can be picked up in Extension Office.
1 Recommended date to own swine, sheep and goats
1 4-H Council, 7:00 p.m., 4-H Building
2 MQA Class-Your family will receive an email if you have anyone who needs to take the MQA as a Jr. or Sr.
7 Mandatory Archery Safety Meeting 7:00 p.m. @ 4-H Building
7 Mandatory Muzzleloading Safety Meeting 6:30 p.m. @ 4-H Building
14 Mandatory Archery Safety Meeting 7:00 p.m. @ 4-H Building
14 Fremont County Fair Board, 6:30 p.m., Pathfinder Park Event Center
20 **LAST DAY** to own and have in your possession-All Breeding Rabbits, including Doe(s) that you must breed to kindle a litter for Market Rabbit pen for County Fair.
27 CSU Extension Advisory Committee, 6:00 p.m., 4-H Building
27 Fremont County 4-H Cornerstone, 7:00 p.m., 4-H Building
30 **PROJECT ADD DEADLINE. Last day to add a project.**
30 **LAST DAY** to own and have in your possession-Cat, Dog and Horse.
30 **LAST DAY** for CAT, DOG and HORSE certificates to be turned into the Extension Office and through 4HOnline no later than 11:59pm.

MAY

4 Market Tests Study Guides Available
6 4-H Council, 7:00 p.m., 4-H Building
6 **LAST DAY** to own and have in your possession-Market Sheep, Market Goats, Market Swine, Breeding Sheep and Breeding Goats.
7 **LAST DAY TO TURN IN CSF Nomination Cards to the Extension Office before 5:00 p.m.**

7 4-H Contest Night! (Demonstrations, Public Speaking, Parli Pro) 5pm

MAY (Continued)

9 WEIGH DAY-Market Swine, 8:00 a.m. Market Sheep and Market Goats, 9:00 a.m., Pathfinder Park (For State Fair Must request DNA packets from State Fair website).
12 Fremont County Fair Board, 6:30 p.m., Pathfinder Park Event Center
15 Creative Cooks Contest Time TBD @ 4-H Building
21 Market Rabbits MUST be born to Does you own (see April 20) on/or after (TBD by date of show at fair) in order to meet the "less than 70-day age limit"
22 Gardening Camp – 9:00 a.m. – 12:00 p.m. 4-H Building in Canon City
25 **Holiday (Memorial Day Observed) Extension Office Closed**
TBD Power up Retreat (Age 10-15)

JUNE

1 **LAST DAY TO OFFICIALLY DROP** a project to be able to repeat it next year **(The ONLY way to officially drop a project is by calling the Extension Office at 719-276-7390 or by e-mail no later than 5:00 p.m.)**
1 Cake Decorating Contest 5:30 @ 4-H Building
1 **FAIR ENTRY OPEN all entries will be done on paper and turned into the extension office**
2 4-H Summer Day Camp: Day 1-Registration due by 5/21
3 4-H Council, 7:00 p.m., 4-H Building
3 Take County Fair Market Animal and Horse Tests in Extension Office. 5:30-7:30pm
4 Take County Fair Market Animal and Horse Tests in Extension Office. 8:00-10:30am
7 Dog Show – more information to come
9 Fremont County Fair Board, 6:30 p.m., Pathfinder Park Event Center
9 4-H Summer Day Camp: Day 2
15-19 State 4-H Conference, Colorado State University
16 4-H Summer Day Camp: Day 3
18 Cloverbud Day Camp: Day 1 -Registration due 6/4
20 Livestock Clinic @ Pathfinder Park Event Center Covered Arena - 8:00 a.m.-12:00 p.m. Hogs, Sheep, Goats, Beef
22 **Entomology Discovery Camp – 8:00 a.m. – 12:00 p.m. Pathfinder Classroom Florence**
23 4-H Summer Day Camp: Day 4
24 Record Book Workshop 5:00 p.m.-6:30 p.m. @ Pathfinder Park Event Center RSVP by 6/22
25 Cloverbud Day Camp: Day 2
25 Retake tests for County Fair Market Animal and Horse Tests in Extension Office by appointment with Office.
TBD Last day to have Horse Levels written and riding tests completed for the County Fair.
25 **MAIN CLUB LEADERS 4-H Attendance page due by 5:00 p.m. Attendance page MUST be filled out correctly! (REQUIRED)**
27 **Distributing Poultry leg bands (Mandatory) 4-H Building**
29 **LAST DAY to enter Fremont County Fair at no charge.**
30 4-H Summer Day Camp: Day 5

JULY

1 Late entries for Fremont County Fair accepted until 5:00 p.m., \$25.00 per project. No entries accepted after July 1st
1 4-H Council, 7:00 p.m., 4-H Building
2 4-H Cloverbud Day Camp: Day 3
2 **Independence Day Observed Extension Office Closed**
7 4-H Summer Day Camp: Day 6
9 4-H Cloverbud Day Camp: Day 4
10 Fremont County Fair, Trap, Cactus Flats, 3:30 Check-in, 4:00 p.m.
11 Fremont County Fair, Skeet, Cactus Flats, 8:30 a.m. Check-In, 9:00 a.m. Shoot
12 **Dog Show – more information to come**
12 Fremont County Fair, Sporting Clays, Cactus Flats, 8:00 a.m. Check-In, 9:00 a.m. Shoot
12 Fremont County Fair, Air Rifle, 4-H Building, Check-In 3:30 p.m., 4:00 p.m. Shoot
14 Fremont County Fair Board, 6:30 p.m., Pathfinder Park Event Center
14 4-H Summer Day Camp: Day 7
16 4-H Cloverbud Day Camp: Day 5
18 Fremont County Fair, Archery, Florence PD Range 7:30 a.m. Check in, 8:00 a.m. Shoot, followed by Muzzleloading @ Florence PD Range TBD
19 Fremont County Fair, .22 Rifle, Florence PD Range, 7:30 a.m. Check-In, 8:00 a.m. Shoot
TBD 19/20 Shooting Sports Awards, Location, 6:00 p.m.
TBD Fremont County 4-H Cornerstone, 7:00 p.m., 4-H Building
21 Shooting Sports Record Books, State Fair and Shirt Fees due in Extension Office by 5:00 p.m.
22 Shooting Sports Record Book Judging, 6:00 p.m. Pathfinder Park Meeting Room
24-Aug. 1 Fremont County Fair
25 Set Up for County Fair at Pathfinder
26 County Fair Horse show – check in for all at 7:30 a.m. – 8:30 a.m.

AUGUST

1 Fremont County Fair Livestock Auction
2 Fremont County Fair Clean-Up Day (all 4-Her's requested to be here)
10-17 Non-perishable 4-H projects for the Colorado State Fair due in the Extension office by 4:00 p.m.
13 **MAIN CLUB LEADERS All County Reports are due by 5:00 p.m. The REQUIRED reports are as follows: Club Continuation, Community Service, and Completion Reports for members, Cloverbuds and leaders.**
13 **MAIN CLUB LEADERS 4-H Club/Organizational State Reports are due by 5:00 p.m. The REQUIRED reports are as follows: Annual Affirmative Action Report, Financial Report, Club Annual Plan, Club Budget, and Constitution & Bylaws.**
13 **LAST DAY** to turn in Secretary, Scrapbook and Treasurer Books for outstanding club award credit to the Ext. Office no later than 5:00 p.m.
18 Fremont County Fair Board, 6:30 p.m., Pathfinder Park Event Center
18 Perishable 4-H projects for the Colorado State Fair due in the Extension office by 12 noon.
17 Shooting Sports Council 6:30 p.m. Pathfinder Park Event Center
20 Final Completion Display Day
20 **LAST DAY** to turn in record books for projects not completed at Fair.
20 **LAST DAY** to turn in ALL Animal e-Record Books to the Extension Office no later than 5:00 p.m. There is not going to be an option for completion only.
22 Saturday, Animal Record Book Judging, 8:00 a.m. Each club is requested to send at least 2 adults (leaders or parents) to help. If a club is not represented by at least one adult to help judge, that club's record books will not be eligible for record book awards. We encourage sending more than 2 if you can, the more people we have, the faster it goes!
28- Sept 7 Colorado State Fair

SEPTEMBER

1 **Holiday (Labor Day) Extension Office Closed**
2 4-H Council, 7:00 p.m., 4-H Building
8 Fremont County Fair Board, 6:00 p.m., Pathfinder Park Event Center
9-10 Pick Up Colorado State Fair projects at CSU Extension Office.

OCTOBER

1 New 4-H Year Begins! Enrollment Open!
7 4-H Council, 7:00 p.m., 4-H Building
4-10 National 4-H Week
10 4-H Discovery Day and Open House
13 Fremont County Fair Board, 6:30 p.m., Pathfinder Park Event Center
19 Enrollment Night 5:00-6:30 p.m. @ Pathfinder Park-Extension Office
22 Achievement Night 6:00 p.m. Pathfinder Auditorium
26 CSU Extension Advisory Committee, 6:00 p.m., 4-H Building
26 Fremont County 4-H Cornerstone, 7:00 p.m., 4-H Building
Nov. 5 Achievement Awards Program – Back up date for weather



FREMONT COUNTY
COLORADO STATE UNIVERSITY
EXTENSION

4-H Member Enrollment Form

Fremont County Extension Office
6655 State Hwy 115
Florence, CO 81226
Office: 719.276.7390 Fax: 719.276.7397
Email: csuext@fremontco.com
Online enrollment:
[www.https://colorado.4honline.com](https://colorado.4honline.com)

2025-2026 Enrollment Year

Enrollment Fee **\$40.00**

Horse Project Insurance Fee **\$1.00**

Shooting Sports Project Fee **\$15**, plus **\$5** for each additional discipline

Cloverbuds Supply Fee **\$5.00**

Note: Families will need to purchase project manuals and there may be additional project fees such as supplies, club dues, etc.

All 4-H ages are based on your age as of 12/31/25

We encourage Enrollment by Dec. 15th, but new enrollments may be accepted at any time. Re-Enrollment Deadline is Feb. 2, 2026. Late Re-Enrollment Fee is \$30 per member.

For Office Use: Date Paid: _____ Amount _____ Cash, Check _____, or Card _____

Club Joining _____ **Age as of December 31, 2025** _____

Note: If your physical address is not in Fremont County you will need to fill out an Out of County Application and/or Continuation Form.

Youth Legal Name (please print) _____
First (Nickname) Middle Initial Last

Address _____
Street Physical Address and PO Box if Mailing Address City Zip

School _____ Grade _____ Birth Date _____ Years in 4-H _____ Member Cell _____
(not published, internal use only)

Residence (check one) ☐ Farm ☐ Rural/10,000 ☐ Town/10 - 50,000 ☐ Suburb/50,000 ☐ City/50,000

Family E-mail (required) _____
(We communicate with our families by e-mail)

Member E-mail address if they'd like to receive notifications _____

List any special accommodation for a disability to participate in this program. _____

Ethnicity (check one) ☐ Hispanic or Latino ☐ Not Hispanic or Latino

Race (check one) ☐ White ☐ Black/African American ☐ Alaskan/Am Indian ☐ Native Hawaiian/Pac. Islander ☐ Asian ☐ Prefer Not to State

Gender: ☐ Male ☐ Female ☐ Other/Unidentified

T-Shirt Size: Youth: _____ Adult: _____

Parent 1 _____
First and Last

Parent 2 _____
First and Last

Address (if different) _____

Address (if different) _____

City _____ **Zip** _____

City _____ **Zip** _____

Home () _____ **Work** _____

Home () _____ **Work** _____

Cell Phone(s) () _____

Cell Phone(s) () _____

Other: _____

Other: _____

Parent Military Information:

Member of Military? Y N

What Branch? _____

Reserve or Guard? _____

Project Name	Project Unit or level # if Applicable	Office Use Only Add Date	Office Use Only Drop Date	For Office Use Only

Signatures required on back.



COLORADO 4-H YOUTH DEVELOPMENT CODE OF CONDUCT

The Colorado 4-H Code of Conduct is designed to create a safe, welcoming environment that supports meaningful learning and personal growth. Participation in 4-H Youth Development events and activities is a privilege, not a right, and is contingent upon adherence to this Code

All individuals participating in or volunteering with the Colorado 4-H Youth Development program at any level, including individual, club, county, regional, state, national, or international, are subject to the behavior standards outlined in the Colorado 4-H Code of Conduct. In addition to this Code, specific events or activities may have additional policies, rules, or procedures that participants are also expected to follow

The Colorado 4-H Code of Conduct applies to both face-to-face and online environments and will be enforced with all 4-H youth members, parents/guardians and volunteers.

When I participate in 4-H programs, I agree to:

1. Adhere to all Colorado 4-H Youth Development Program policies and procedures.
2. Respect the rights and authority of 4-H volunteers and Extension and 4-H Professionals.
3. Conduct myself in a courteous, respectful, and ethical manner; demonstrate good sportsmanship; and serve as a positive role model.
4. Abstain from abuse (physical and/or verbal) and harassment. All aggressive, vulgar, or violent language and behavior (ex: bullying, fighting, threats, insults, cursing, discrimination, etc.) is not permitted.
5. Abstain from the use of alcohol, marijuana, illegal or illicit drugs, and all tobacco or nicotine products, including e-cigarettes and vaping devices, during 4-H events and activities.
6. As outlined in the Colorado 4-H Dress Code, dress appropriately for all 4-H events and activities, following any specific attire requirements. Clothing that is overly revealing or displays profanity, violence, political affiliation, or promotes tobacco, alcohol, or drugs is not permitted.
7. Use mobile phones or other electronic devices during scheduled 4-H activities only in a manner that is consistent with the approved activity and does not cause disruption.
8. Promote and model the responsible, respectful, and lawful use of social media. The creation or sharing of content that is abusive, threatening, defamatory, obscene, harassing, or that contributes to a hostile environment is strictly prohibited and will not be tolerated.
9. Respect the property of others, including facilities, equipment, and personal belongings. Damage, destruction, theft, or removal of property is strictly prohibited. Participants and/or their parents or guardians will be held financially responsible for any damage caused to program property or the personal items of others.
10. Not possess, use, or distribute firearms, archery equipment, fireworks, knives, or any other items that could be used as weapons during 4-H programs or events, except under adult supervision as part of scheduled instructional activities.

11. Acknowledge that personal property may be subject to search when there is reasonable suspicion of a violation of law or 4-H policies. This may include searches of outer clothing, luggage, personal belongings, lodging rooms, and furniture.

12. Complete my own work on all 4-H projects, properly cite all source materials, including those generated by artificial intelligence when appropriate, avoid plagiarism, and uphold academic integrity

Consequences for violating any part of the Colorado 4-H Code of Conduct may include, but are not limited to, the following:

- Notification of parents/guardians and appropriate 4-H volunteers and/or staff members
- Restriction from participation in future 4-H events
- Removal from 4-H officer roles held
- Removal from 4-H membership
- Removal from participation in 4-H events/activities; the participant and/or their parent(s)/guardian(s) will be responsible for all associated costs incurred because of their removal

The behavior of 4-H members, parents, family members, and volunteers, both during and outside of 4-H activities, can impact their status within the program. All must share the responsibility to uphold the 4-H Code of Conduct and are encouraged to report any concerns or violations to 4-H leadership promptly and appropriately.

Colorado State University, U.S Department of Agriculture and Colorado counties cooperating. To simplify technical terminology, trade names or products and equipment occasionally will be used. No endorsement of product names is intended nor is criticism implied of products not mentioned. | Colorado State University Extension is an equal opportunity provider. Colorado State University does not discriminate on the basis of disability and is committed to providing reasonable accommodations. CSU's Office of Engagement and Extension ensures meaningful access and equal opportunities to participate to individuals whose first language is not English. <https://col.st/OWMJ> | Colorado State University Extension es un proveedor que ofrece igualdad de oportunidades. Colorado State University no discrimina por motivos de discapacidad y se compromete a proporcionar adaptaciones razonables. Office of Engagement and Extension de CSU garantiza acceso significativo e igualdad de oportunidades para participar a las personas quienes su primer idioma no es el inglés. <https://col.st/OWMJ>

Member Signature (required)_____ Date_____

Parent/Guardian Signature (required)_____ Date_____

Fremont County 4-H Completion Requirements

1. Fremont County 4-H members must enroll by the appropriate deadlines.
2. Members must pay all appropriate fees to the Extension office within stated deadlines.
3. Members must attend at least 50% of regularly scheduled club meetings with a minimum of 2 meetings prior to July 1. Project meetings, practices, workshops, community service, etc. do not count towards club attendance.
4. Members must present at least one project related educational demonstration for each project they are enrolled in. The demonstration should be approved by your Main 4-H club leader.
5. Members must exhibit the project. Exhibiting may be accomplished by entering in the County Fair, Final Completion Display Day, or other livestock show, event, meeting, or other activity/location approved by the Extension Office. General project exhibits should follow the specific requirements for project exhibits as listed in the Fremont County Fair Book unless other arrangements are made through the Extension Office. For livestock projects, in the event your animal should die or become injured, the livestock project record book **MUST** include a complete explanation of the situation.
6. Members must participate in a citizenship, community service, or community pride project during the current year. This can be accomplished through the local 4-H club, school, church, or other youth organization.
7. 4-H record books must be completed, turned in by the deadline, and score a minimum of 70% to be considered satisfactory and complete.
8. For projects to be considered complete for the 4-H year, all requirements must be completed and satisfactory documentation turned in by August 20th.
9. To maintain good standing in 4-H, at least 1 project must be completed. To enroll in a project again, it must be completed.

Failure to satisfactorily complete these requirements by August 20th of the current year will result in the 4-H member's good standing status being reviewed by the Extension Office. Members may document any legitimate reasons (Ex: Injury/Illness, family situation, Acts of God destroying a project, etc.) for failure to complete the requirements and submit to the Extension Office. "Not having enough time or not knowing a deadline" is NOT a legitimate reason for non-completion. Each member may drop projects or membership up to June 1st of the current year with no fault regarding completion requirements.

4-H members must complete a project this year to re-enroll in that project next year. If a project is incomplete and the member wants to re-enroll in the project next year, they must meet with the Extension Office to create a project remediation plan which must be completed before they will be allowed to re-enroll in that project.

By signing this form, we are stating that we have read and understand the 4-H enrollment rules, deadlines and requirements. We have read and agreed to abide by the 4-H Code of Conduct on the back of this form.

Member's Signature (required)_____ Date_____

Parent or guardian signature (required)_____ Date_____

PERMISSION TO USE CHILD'S PHOTOGRAPH FORM

Colorado State University Extension would like to share the positive results of youth/volunteer participation in Extension and 4-H Youth Development events. However, in some cases, parents or guardians may want to deny this publicity. If you DO NOT want your child's picture used for certain promotional efforts, select the appropriate option and sign below.

☐ I APPROVE that CSU Extension and 4-H Youth Development can use my child's picture for promotional efforts.

☐ I DO NOT APPROVE for CSU Extension and 4-H Youth Development to use my child's picture for promotional efforts.

Signature of Parent or Legal Guardian _____(Date) _____

Medical Authorization

I hereby give my permission to officials to call a doctor or emergency medical service and for the doctor, hospital or medical service to provide emergency medical or surgical care for my child should an emergency arise. It is understood that event officials will make a conscientious effort to locate emergency contacts before any action will be taken. If it is not possible to locate emergency contacts listed, I/we will accept the expense of the emergency medical or surgical treatment.

☐ I agree with the above statement.

☐ I disagree with the above statement.

Signature of Parent or Legal Guardian _____(Date) _____

County Vehicle Waiver of Liability

Name of Event/Activity: _____ I,
_____, for myself, my heirs, and my personal representatives hereby
assume all risk of personal injury or death and property damage or loss from whatever causes
arising, while I am on County premises and/or while I am engaged in riding in a county vehicle and
release the county, its officers, agents and employees from any liability therefore, directly or
indirectly, and will defend, indemnify and save harmless the county, its officers, agents and
employees from any such liability, whether or not arising out of negligent or willful actions or the
failure to act on the part of the County, its officers, agents and employees. The consideration for my
agreements herein is my being allowed to engage in the activity identified above. (Further, I certify
that I am over 18 years of age.)

If participant is under the age of 18 years, the following section must be completed.

I, _____, being a parent or legal guardian of
_____, a child, for myself, my heirs, and my personal representatives,
hereby agree to defend, indemnify, and save harmless the county, its officers, agents and
employees, from any action brought by or on behalf of the above-named child arising out of the
activity identified above. The consideration for my agreements herein is the county allowing said
child to engage in such activity.

Signature

Date



COLORADO STATE UNIVERSITY
EXTENSION

READ THIS DOCUMENT COMPLETELY BEFORE SIGNING. ITS EFFECT IS TO RELEASE City of Florence, Fremont COUNTY, COLORADO 4-H FOUNDATION, COLORADO STATE UNIVERSITY, ITS GOVERNING BOARD, AND THE STATE OF COLORADO FROM ANY LIABILITY RESULTING FROM YOUR PARTICIPATION IN THE ACTIVITIES DESCRIBED BELOW, AND TO WAIVE ALL CLAIMS FOR DAMAGES OR LOSSES AGAINST THE UNIVERSITY WHICH MAY ARISE FROM SUCH ACTIVITIES EVEN IF THEY RESULT FROM NEGLIGENCE.

Permission for Youth to participate in 4-H In-person Programming

I understand that my child, _____, will be participating in the Fremont County 4-H Activities Activities that may include (contests, workshops, banquets, dances and optional activities may include numerous inherent risks. I am aware and have discussed the following inherent risks with my child:

The specific risks vary from one activity to another, but the risks range from:

- Minor injuries such as scratches, bruises, and sprains;
- Major injuries such as eye injury or concussions
- Exposure to COVID-19.

RELEASE FROM RESPONSIBILITY, ASSUMPTION OF RISK, AND WAIVER

PARTICIPANT'S FULL NAME: _____ **Date of Birth** _____
Address: _____ **City** _____ **State** _____ **ZIP** _____

I, the undersigned participant, exercising my own free choice to participate voluntarily in the activities described above, and promising to take due care during such participation, hereby acknowledge that I have been informed of the nature of the activities and that I am aware of the hazards and risks which may be associated with my participation in the above-named activities, including the risks of bodily injury, death or damage to property which may occur from known or unknown causes. I understand, accept, and assume all such hazards and risks, and waive all claims against _____ County, Colorado 4-H Foundation, State of Colorado, The Board of Governors of the Colorado State University System, Colorado State University, and other persons as set forth above. I understand that I am solely responsible for any costs arising out of any bodily injury or property damage that I may sustain through my participation in normal or unusual acts associated with the above-named activities, regardless of whose fault may be the cause of my injuries or damages, EVEN IF CAUSED BY CARELESSNESS OR NEGLIGENCE.

Further, I hereby indemnify and hold harmless The Board of Governors of the Colorado State University System and Colorado State University, Colorado 4-H Foundation, and their members, officers, agents, employees, and any other persons, or entities acting on their behalf, and the successors and assigns for any and all of the aforementioned persons and entities, against any and all claims, demands, and causes of action whatsoever, whether presently known or unknown, of any person who suffers any injury, disability, death or other harm, to person or property or both, as a result of my negligent acts or omissions arising out of my participation in and/or presence at the above listed activities.

I have had sufficient time to review and seek explanation of the provisions contained above, have carefully read them, understand them fully, and agree to be bound by them. After careful deliberation, I voluntarily give my consent and agree to this Release From Responsibility, Assumption of Risk, and Waiver.

If participant is under the age of 18, his or her parent or legal guardian must sign:

I, (printed name) _____, am the parent or legal guardian of the _____ participant who has signed above. I have read and I understand the provisions of this document, and acting on behalf of the participant, I consent to the participant taking part in the activities described above, and I fully enter into and agree to the above Release from Responsibility, Assumption of Risk, and Waiver as authorized pursuant to C.R.S. section 13-22-107.

Signature of Parent or Legal Guardian

(date)

Animal Care and Housing Form for Colorado 4-H Animal Projects



It is the responsibility of every 4-H member to ensure that proper care is taken of their animal(s) according to acceptable methods of good animal husbandry, as set forth by Colorado State University Extension and the Colorado Department of Agriculture. A healthy animal requires sufficient food, water, shelter, and appropriate health care. Cruel and inhumane treatment or neglect is prohibited in the Colorado State University Extension 4-H Program. Specific animal husbandry guidelines and humane training methods are provided in the 4-H manuals.

It is necessary for the local county Extension office to know the location of all 4-H animal projects. The Colorado 4-H project recommendation for primary care states that “4-H members will provide primary care and continuous care of the project animals. **“Primary care is defined as the 4-H member making the decisions for and/or providing the care, handling, and training of their animal project most of the time.”** Any primary care exemption must be approved by the county Extension specialist/coordinator. With advanced notification, 4-H members and guardians acknowledge facilities and animal welfare checks may be conducted at any time by Extension specialist/coordinator.

4-H animal project participants are required to complete an animal care form each 4-H year. This document does not imply ownership of animal(s) listed. It denotes your responsibility to care for the listed animal(s). Please check the box for each species you will be participating in this 4-H year. To exhibit at the Colorado State Fair 4-H contests, ownership rules must be followed.

Please complete the following information and return the completed form to your county Extension Office.

<input type="checkbox"/> Beef Cattle	<input type="checkbox"/> Dairy Cattle	<input type="checkbox"/> Goat	<input type="checkbox"/> Horse	<input type="checkbox"/> Llama	<input type="checkbox"/> Poultry
<input type="checkbox"/> Sheep	<input type="checkbox"/> Swine	<input type="checkbox"/> Cat	<input type="checkbox"/> Dog	<input type="checkbox"/> Rabbit	<input type="checkbox"/> Other _____

Please check all that apply.

Name:	4-H Club:	Date:
Physical Address:	City:	State/Zip:
Phone Number:	Optional: Premises Identification Number (PIN):	

This section is for animals housed at your home.

Will **all** your project animals be housed at your **home location**? Yes ☐ or No ☐

If answer is **No**, please complete the questions on **page 2**.

If answer is **Yes**, please sign below

I hereby certify that I have read the above information and will comply with the rules set for above.

Parent/Guardian's Signature

4-H Member's Signature

This section is for animals NOT housed at your home.

1. List the particular circumstances that prevent you from having your project animal(s) housed at your primary residence.

2. Please indicate where (including address) each animal will be housed and the landlord/caretaker of residence.
(Horse projects only: ☐ Check this box if your horse(s) is being boarded and supply the following)

Landlord/Caretaker Name: _____

Physical Address: _____

City, State, and Zip Code: _____

Telephone/cell phone number: _____

Optional Information: Premises Registration Number with NAIS: _____

3. How do you plan to care for the project animal (s) not located at your primary residence? What arrangements have you made for traveling to and from the non-primary residence to care for your animal(s)?

4. If you will not be providing primary care for your project animal(s) during the entire ownership period, explain who will be providing primary care, when they will be caring for the project animal(s), and why you are unable to provide primary care for the project animal(s) through the ownership period.

5. What 4-H shows do you plan to participate in? You will always be under the same primary care requirements. Please list the shows below:

As the landlord/caretaker of the property listed above, I acknowledge the 4-H program's intent is educational; as such I will encourage and require the 4-H member to be extensively and continuously involved in the care of their animals housed at my property. If deemed necessary by the Extension specialist/coordinator, I grant the Extension specialist/coordinator permission to check on the 4-H member's animal(s) while they are housed on my property provided advance notice is given.

Landlord/Caretaker's Signature

Date

I hereby certify that the above information is truthful and accurate.

Parents/Guardian Signature

4-H Member's Signature

*Your request for Animal Care Exemption has been:

☐

Approved

☐

Denied

4-H Extension Specialist/Coordinator Signature

Date