

Intermediate Market Goat Study Guide

Please reference the Goat Resource Handbook and Fremont County Fair Book

Goat Resource Handbook can be ordered online from this link:

<https://extensionpubs.osu.edu/goat-resource-handbook/> or checked out at the Extension

Office

Terms to be defined:

- Caprine:
- Kid:
- Pica:
- Ration:
- Chevron:
- Withdrawal Time:

Know how to calculate average daily gain using the following formula:

$$\text{Average Daily Gain} = \frac{\text{Final Weight} - \text{Initial Weight}}{\text{Days}}$$

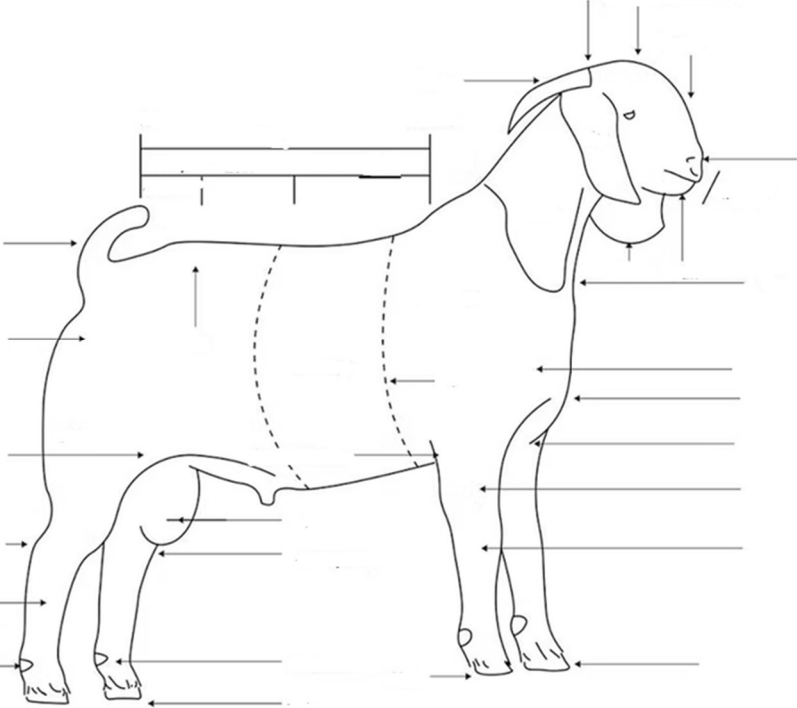
Example: If a goat weighed 45lbs. at weigh-in and weighed 100lbs. at fair weigh-in 70 days later, what was its average daily gain?

Know how to calculate lamb weight using the following formula:

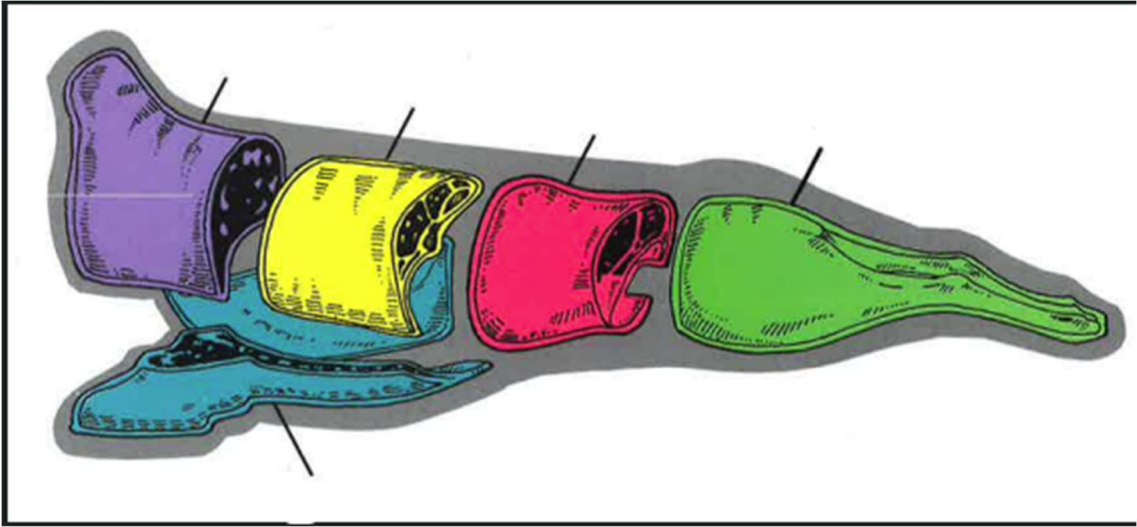
$$(\text{LBS. per Day} * \text{Days}) + \text{Weigh In Weight} = \text{Weight at Fair}$$

Example: If a goat weighs 120lbs. at fair and gained 0.5lbs. per day, how much did the goat weigh at fair 80 days later?

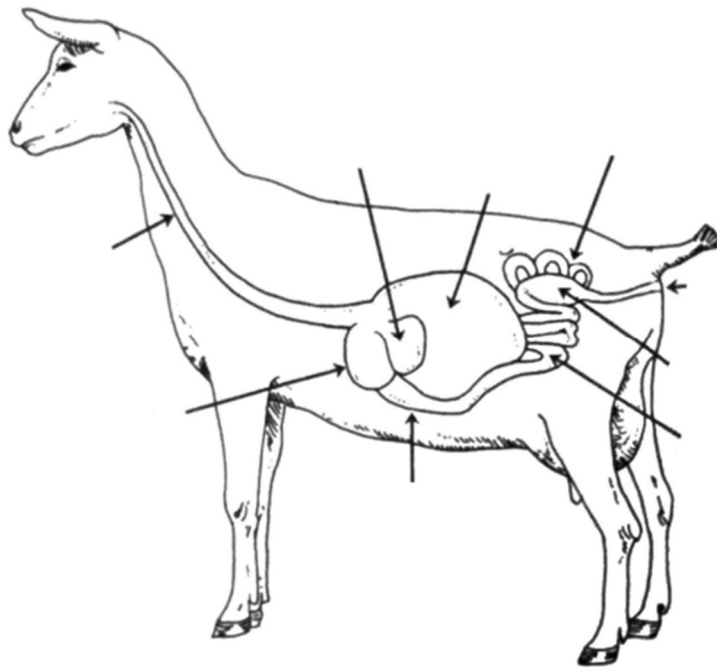
Be able to identify parts of a market goat using the following diagram from the 4-H Goat Resource Handbook.



Be able to identify the wholesale cuts of a meat goat using the following diagram from the 4-H Goat Resource Handbook.



Be able to identify parts of the digestive system using the following diagram from the 4-H Goat Resource Handbook.



Understand the following topics:

- Fremont County Fair minimum weight for fair
- Fremont County Fair minimum and maximum ages of animal
- Fremont County Fair mandatory classes
- Types of goats used for meat
- The 6 main groups of essential nutrients including water, carbohydrates, fats, protein, vitamins, and minerals
- What occurs when certain vitamins are deficient
- The difference between forages and concentrates and which feedstuffs fall into each category
- What are the 2 ways to disbud a kid
- Which goats are most affected by parasite infestations
- What causes urinary calculi and how to prevent it
- What does the 4-H resource handbook contribute the rise of goat meat popularity to?