

# Junior Market Swine Study Guide

Please reference the Swine Resource Handbook and Fremont County Fair Book

Swine Resource Handbook can be ordered online from this link:

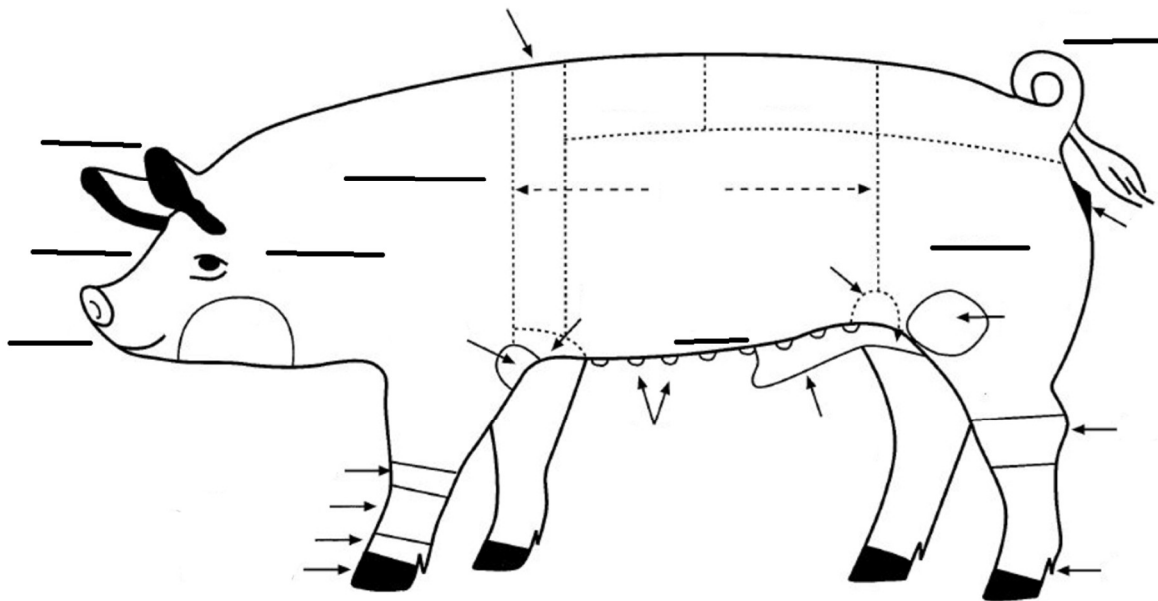
<https://extensionpubs.osu.edu/swine-resource-handbook/> or checked out at the Extension

Office

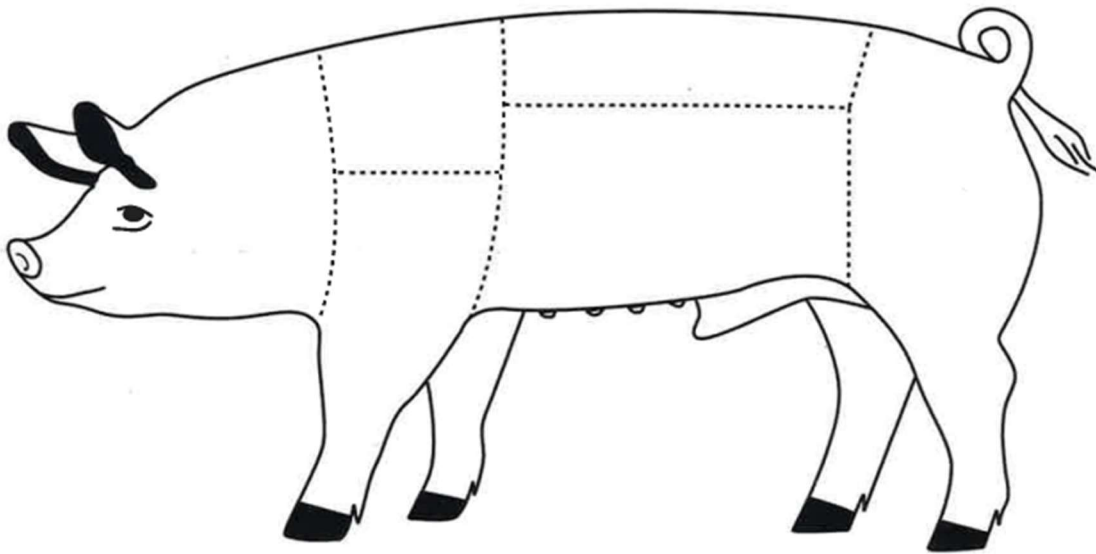
Terms to be defined:

- Sow:
- Gilt:
- Barrow:
- Boar:
- Hurdle:

Be able to identify parts of a pig using the following diagram from the 4-H Sheep Resource Handbook.



Be able to identify wholesale cuts of lamb using the following diagram from the 4-H Sheep Resource Handbook.



Understand the following topics:

- Importance of soundness in the structure of hogs
- How feeding different types of fats affects meat quality
- Average growth rate for a feeder pig
- How to read ear notches
- Common breed characteristics
- How to read feed tags
- Areas not to tap a pig
- Fremont County Fair minimum weight for fair
- Fremont County Fair minimum and maximum ages of animal
- Fremont County Fair mandatory classes