

Senior Market Chicken Study Guide

Please reference the Poultry Resource Handbook and Fremont County Fair Book

Poultry Resource Handbook can be found online from this link:

<https://co4h.colostate.edu/wp-content/uploads/sites/27/2025/11/Poultry-Handbook.pdf>

or checked out at the Extension Office

Terms to be defined:

- Frizzle:
- Nits:
- Withdrawal Time:
- Defect:
- Harvest:
- Splayed Legs:
- Pasty Butt:
- Toe Picking:
- Cockerel:
- Pullet:
- Hen:
- Cock:

Know how to calculate profit using the following formula:

$$\textit{Profit} = \textit{Revenue} - \textit{Expenses}$$

Example: If you sell a pen of broilers at the Fremont County Fair for \$700.00 and you have expenses of \$394.27, how much profit did you make??

Know how to calculate expenses per bird using the following formula:

$$\textit{Expenses per bird} = \textit{Expenses} \div \textit{Number of birds}$$

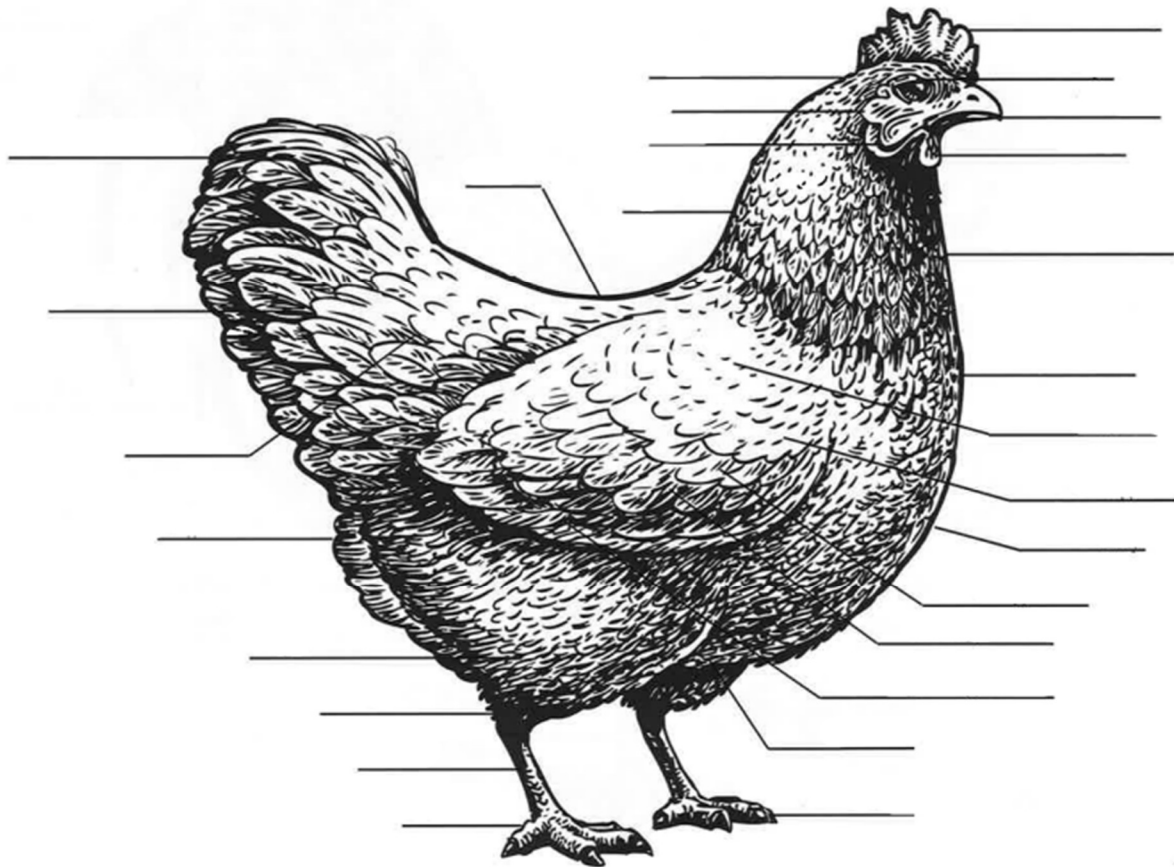
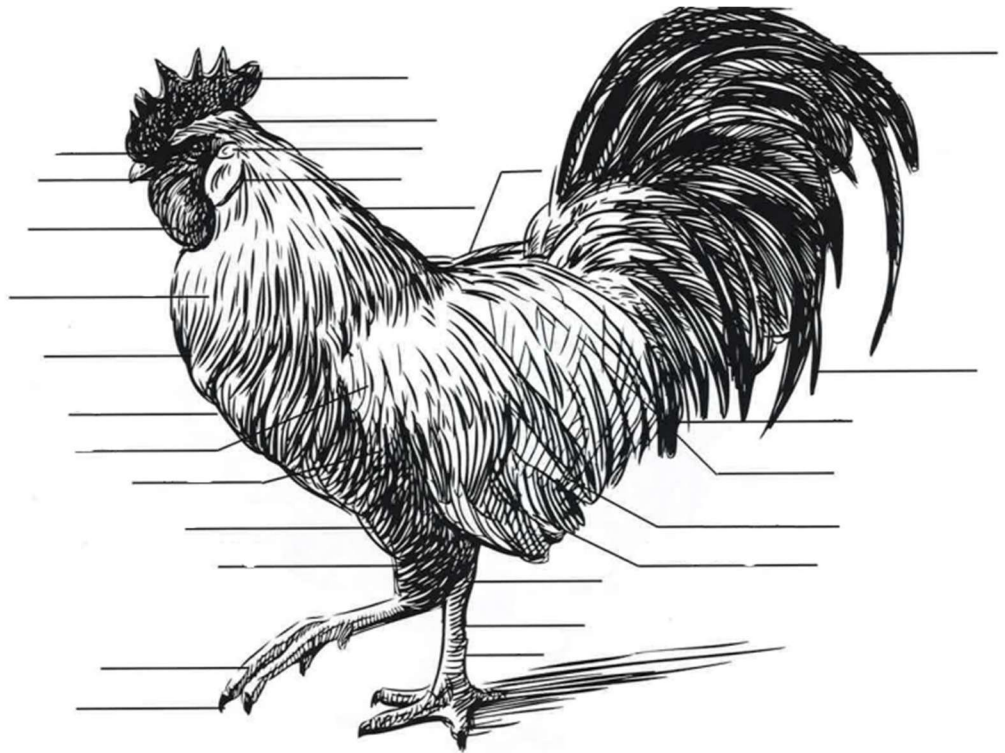
Example: If you spent \$394.27 to care for your 10 market chickens, how much were your expenses per bird?

Know how to calculate commission using the following formula:

$$\textit{Commission Owed} = \textit{Sale Price} * \% \textit{ of commission}$$

Example: You sell a pen of broilers at the Fremont County Fair for \$700.00. The sale commission is 8%. How much commission do you owe?

Be able to identify parts of a Chicken using the following diagrams from the 4-H Poultry Resource Handbook.



Understand the following topics:

- Requirements for a good chicken coop, specifically space requirements, types of shavings to use, and cleaning practices
- Fremont County Fair pen, age, sex, breed, and weight requirements
- Brooder box temperature requirements and what to use to help warm chicks
- How to transition chickens to different feeds, including method and time frame
- Fremont County Livestock Sale eligibility rules
- Disease that is the number 1 killer of chicks
- Fremont County Fair mandatory classes
- Protein requirements for market chickens
- Market species characteristics and common problems
- 4 basic maneuvers for showmanship
- Most common predators of chickens
- Types of feeds and what they contain such as nutrients and protein percentages
- Where frostbite occurs
- Mites and Lice
- Symptoms of respiratory distress
- Categories that judges use to place poultry
- What a vet-check looks for