

# Senior Market Lamb Study Guide

Please reference the Sheep Resource Handbook and Fremont County Fair Book

Sheep Resource Handbook can be ordered online from this link:

<https://extensionpubs.osu.edu/sheep-resource-handbook-for-market-and-breeding-projects/> or checked out at the Extension Office

Terms to be defined:

- Finish:
- Dock:
- Forage:
- Mutton:
- Drenching:
- Prolapsed Rectum:
- Cecum:
- Yield Grade:
- Foot Rot:
- Wether:
- Withdrawal Time:
- Dressing Percent:

Know how to calculate average daily gain using the following formula:

$$\text{Average Daily Gain} = \frac{\text{Final Weight} - \text{Initial Weight}}{\text{Days}}$$

Example: If a lamb weighed 60lbs. at weigh-in and weighed 125lbs. at fair weigh-in 70 days later, what was its average daily gain?

Know how to calculate lamb weight using the following formula:

$$(\text{LBS. per Day} * \text{Days}) + \text{Weigh In Weight} = \text{Weight at Fair}$$

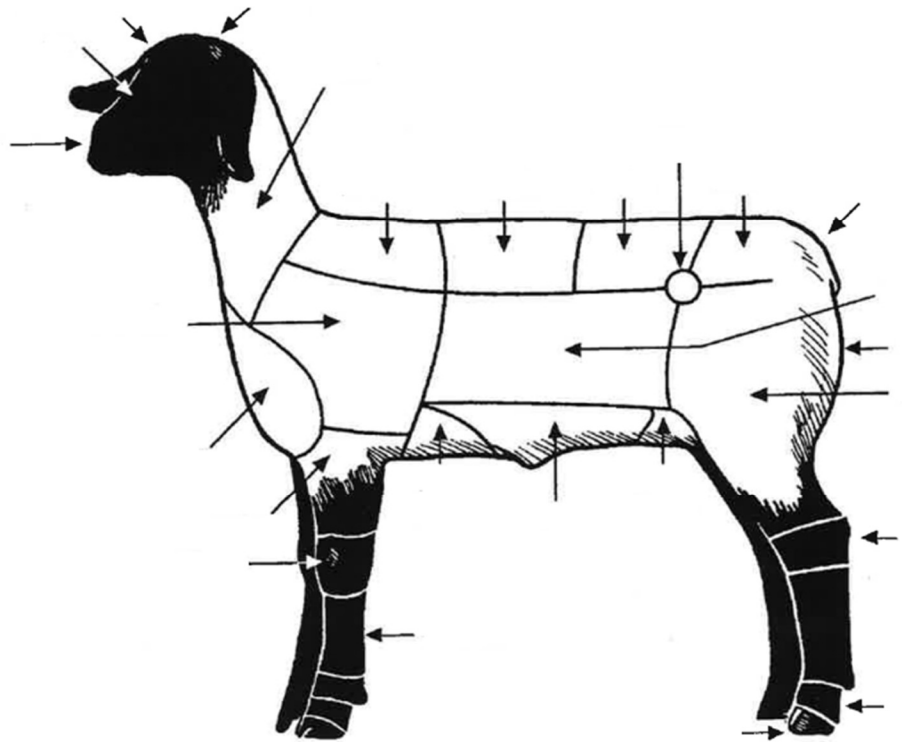
Example: If a lamb weighs 60lbs. at weigh-in and gained 1lbs. per day, how much did the lamb weigh at fair 80 days later?

Know how to calculate dressing percent:

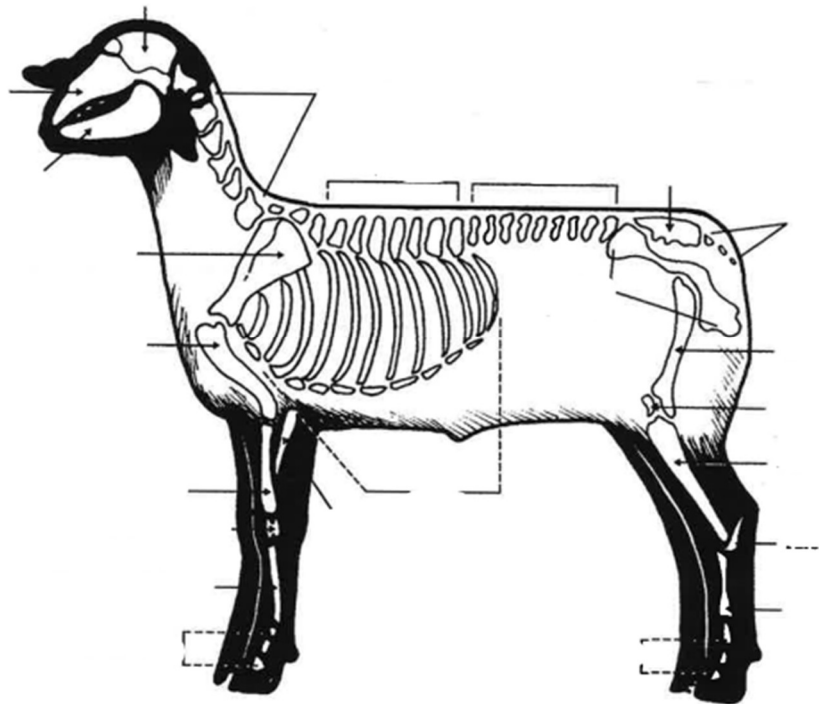
$$\frac{\text{Carcass Weight}}{\text{Live Weight}} * 100 = \text{Dressing Weight}$$

Example: If a lamb weighed 135lbs at fair and had a chilled carcass weight of 70lbs, what was the dressing percent of that lamb?

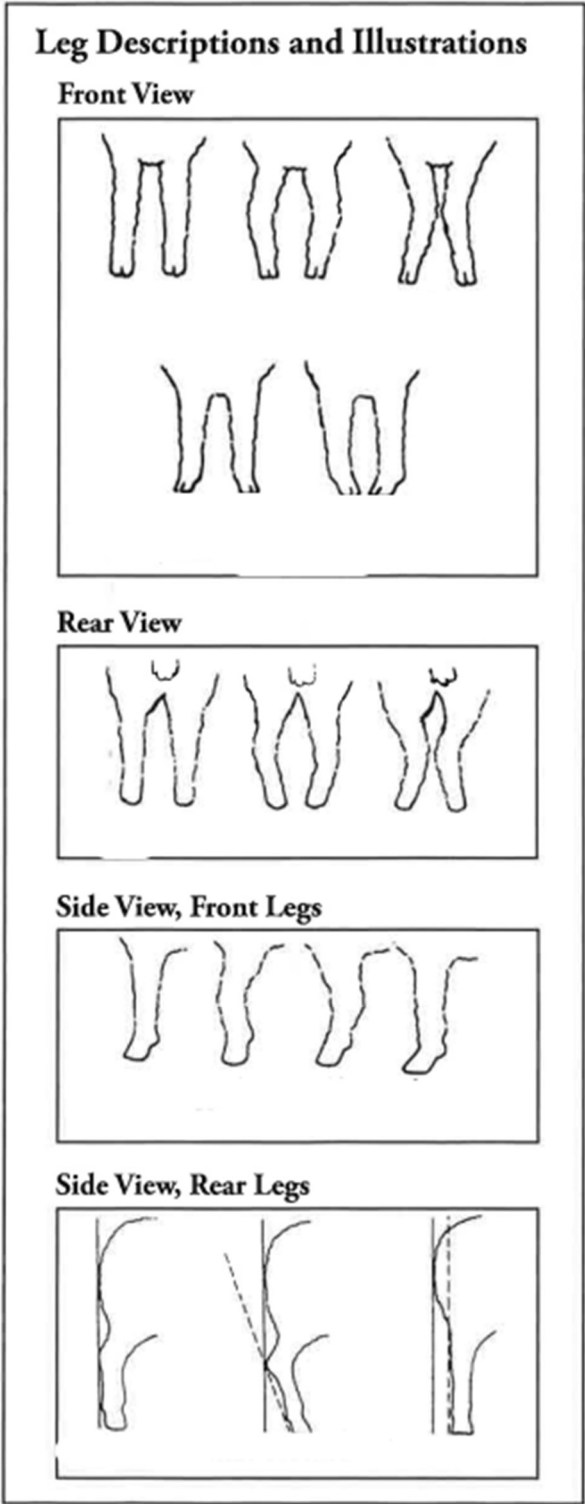
Be able to identify parts of a sheep using the following diagram from the 4-H Sheep Resource Handbook.



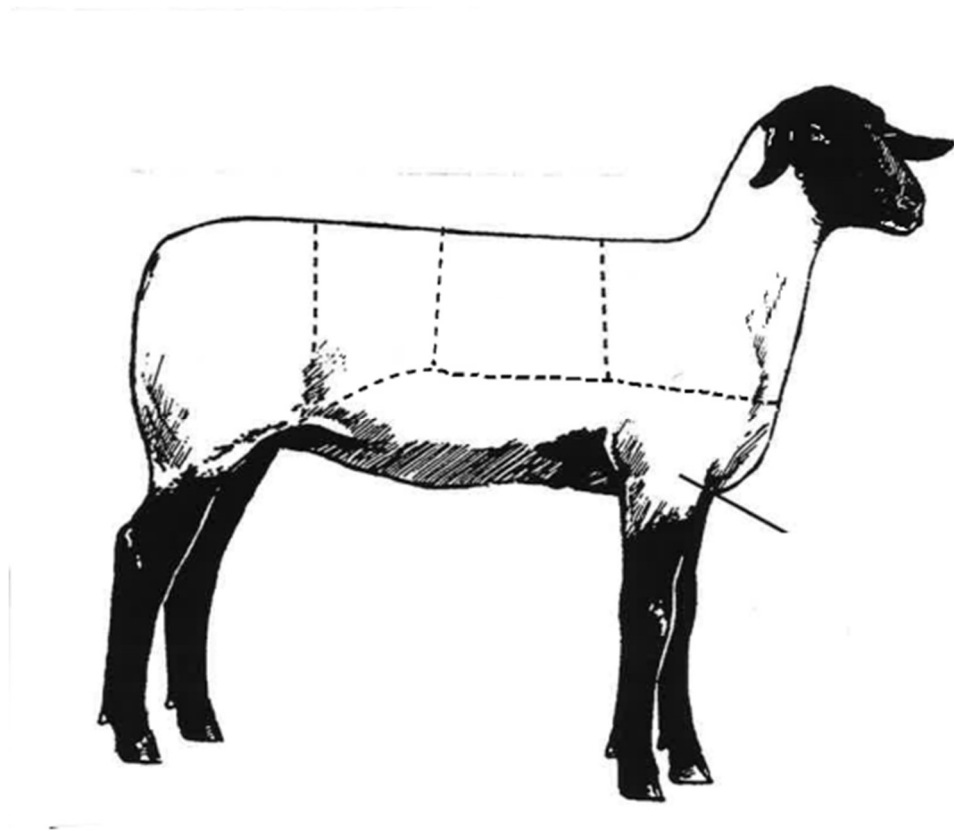
Be able to identify the parts of the skeleton using the following diagram from the 4-H Sheep Resource Handbook.



Be able to identify the structural differences using the following diagram from the 4-H Sheep Resource Handbook.



Be able to identify wholesale cuts of lamb using the following diagram from the 4-H Sheep Resource Handbook.



Understand the following topics:

- What is classified as a concentrate and what is classified as a roughage?
- Fremont County Fair minimum weight for fair
- Different parts of a feed label such as purpose of feed, guaranteed analysis, ingredient statement, and feeding instructions
- Hoof trimming tips
- Fremont County Fair minimum and maximum ages of animal
- Fremont County Fair mandatory classes
- How feeds are categorized into the 5 essential nutrients for sheep and the purpose of each group which includes water, energy, protein, minerals, and vitamins
- USDA Yield Grade scale and what each number means
- Where back fat is measured
- How to treat and what causes certain common illnesses such as foot rot, stiff-lamb, enterotoxemia, and prolapsed rectum
- Adjusting feed ration best practices
- Which areas are evaluated for finish?
- Injection site protocols and routes of administration
- Range for desired fat thickness